

MEMORY CARE DESIGN COORDINATES

High Performance • Moisture Resistant • Bleach Cleanable

MAYER + **HEKMAN**
FABRICS CONTRACT



ABBEY
WC706-016 Metal



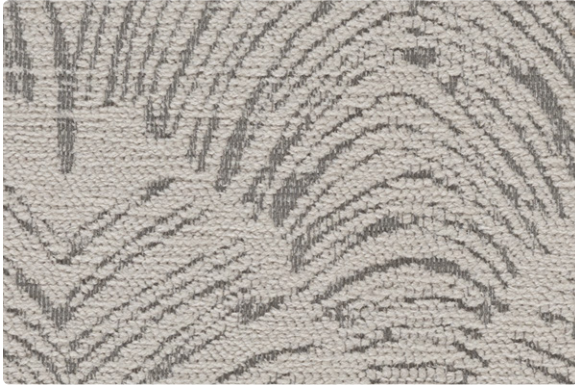
ABBEY
WC706-002 Citrus



KENSINGTON
WC701-002 Caramel



KENSINGTON
WC701-006 Stone



FITZ
WC931-017 Shore

Shown at 75% scale.



COSMOPOLITAN
WC968-012 Lemongrass



COSMOPOLITAN
WC968-017 Oatmeal



MATKA
MT-020 Burnish



MATKA
MT-015 Thistle



ABBEY
WC706-006 Iron



FITZ
WC931-000 Cobblestone

Shown at 75% scale.



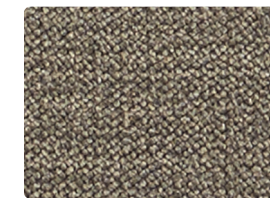
UTOPIA
473-016 Fog



UTOPIA
473-027 Driftwood



COSMOPOLITAN
WC968-006 Shadow



COSMOPOLITAN
WC968-000 Shiitake



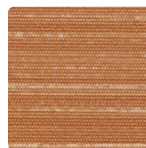
SONNET
ST-007 Latte



SONNET
ST-017 Driftwood



SONNET
ST-002 Amber



SONNET
ST-009 Mango



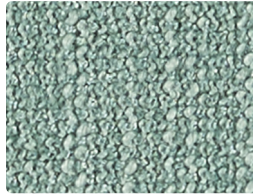
SONNET
ST-019 Terra Cotta



SONNET
ST-000 Taupe



ABBEY
WC706-017 Limestone



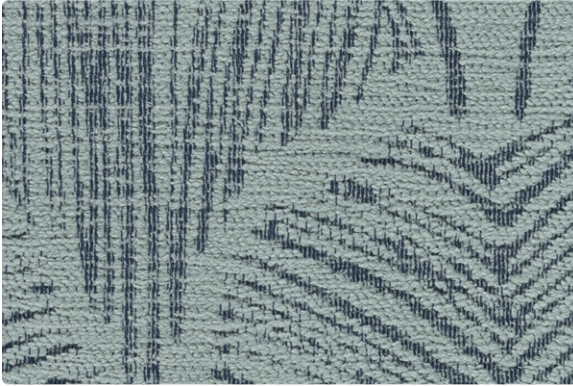
ABBEY
WC706-024 Sea



KENSINGTON
WC701-007 Almond



KENSINGTON
WC701-003 Jungle

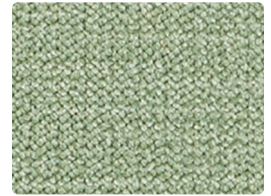


FITZ
WC931-003 Seafoam

Shown at 75% scale.



COSMOPOLITAN
WC968-016 Mist



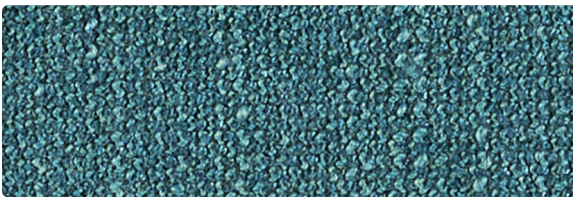
COSMOPOLITAN
WC968-003 Opal



MATKA
MT-024 Seafoam



MATKA
MT-076 Alloy



ABBEY
WC706-014 Ocean

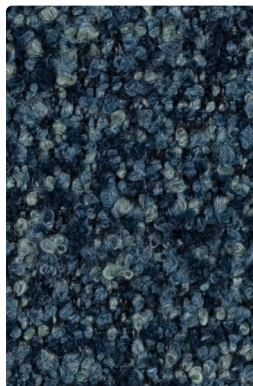


FITZ
WC931-004 Atlantis

Shown at 75% scale.



UTOPIA
473-003 Sprout



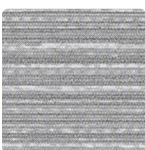
UTOPIA
473-034 Rainstorm



COSMOPOLITAN
WC968-004 Denim



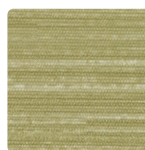
COSMOPOLITAN
WC968-010 Granite



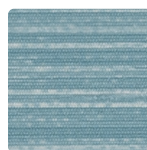
SONNET
ST-026 Zinc



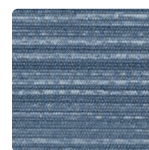
SONNET
ST-003 Sage



SONNET
ST-013 Pear



SONNET
ST-014 Ocean



SONNET
ST-024 Chambray



SONNET
ST-036 Titanium

TECHNICAL INFORMATION

Memory Care Design Coordinates

Pattern 54"	Content and Backing	Certifications	Weight/ Linear Yd.	Pattern Repeat	Finish	Abrasion Wyzenbeek	Light- Fastness	Flammability	Cleaning- Code
ABBEY <i>Directional</i>	100% Polyester Backing: Crypton®	GREENGUARD Gold	22.76 oz.	None	Crypton® with Antimicrobial Silver Ion Technology	100,000^ Double Rubs	40 hours	Cal. 117-2013 NFPA 260/UFAC Class 1	C, BC
COSMOPOLITAN <i>Directional</i>	88% Polyester, 12% Nylon Backing: Crypton®	GREENGUARD Gold	19.28 oz.	None	Crypton® with Antimicrobial Silver Ion Technology	100,000^ Double Rubs	40 hours	Cal. 117-2013 NFPA 260/UFAC Class 1	C, BC
FITZ <i>Directional</i>	100% Polyester Backing: Crypton®	GREENGUARD Gold	18.8 oz.	9.875" H, 9.75" V	Crypton® with Antimicrobial Silver Ion Technology	100,000 Double Rubs	40 hours	Cal. 117-2013 NFPA 260/UFAC Class 1	W, C, BC
KENSINGTON <i>Directional</i>	100% Polyester Backing: Crypton®	GREENGUARD Gold	20.48 oz.	None	Crypton® with Antimicrobial Silver Ion Technology	100,000^ Double Rubs	40 hours	Cal. 117-2013 NFPA 260/UFAC Class 1	C, BC
MATKA <i>Directional</i>	80% Vinyl - Phthalate Free face, 20% Polyester backing	GREENGUARD	30 oz.	Non- Matching	Soil & Stain Resistant Top Coat with Ink Resistant Technology	250,000^ Double Rubs	500 hours	Cal. 117-2013 NFPA 260/UFAC Class 1	WS, BC, CFC
SONNET <i>Directional</i>	78% Vinyl - Phthalate Free face, 22% Polyester backing	GREENGUARD	26 oz.	Non- Matching	Soil & Stain Resistant Top Coat	100,000^ Double Rubs	1000 hours	Cal. 117-2013 NFPA 260/UFAC Class 1	WS, BC, CFC
UTOPIA <i>Directional</i>	88% Polyester, 7% Acrylic, 3% Polyurethane, 2% Silicone Backing: Fluid Barrier (Supreen) Polyurethane	GREENGUARD Gold	24.5 oz.	None	Supreen (Silicone) PFAS Free	100,000^ Double Rubs	40 hours	Cal. 117-2013 NFPA 260/UFAC Class 1	WS, BC

REDUCED ENVIRONMENTAL IMPACT

These products are GREENGUARD Certified or GREENGUARD Gold Certified for low chemical and particle emissions to UL standard UL 2818 and may contribute to LEED certification.

CARE AND CLEANING INFORMATION

W: Water-Based Cleaner WS: Water/Solvent Cleaner C: Crypton Cleaning CFC: Coated Fabrics Cleaning – Refer to Mayer website for complete cleaning info.
BC: Bleach Cleanable – 1 part bleach, 9 parts water = 10% bleach, 90% water solution. **Do not clean/disinfect fabric for longer than 10 minutes using the 10% bleach solution. Always rinse promptly with clean water after applying the bleach solution. Failure to do so will void any and all warranties.**

DYE TRANSFER DISCLAIMER

Certain clothing and accessory dyes (such as those used on denim jeans) may migrate to lighter colors. This phenomenon is increased by humidity and temperature and is irreversible. Mayer Fabrics will not assume responsibility for dye transfer caused by external contaminants. Please check compatibility when using this product in combination with painted or varnished surfaces.

ADDITIONAL INFORMATION

^ Abrasion test results exceeding ACT Performance Guidelines are not an indicator of product lifespan. Multiple factors affect fabric durability and appearance retention. Warranty: Please refer to the Mayer website for warranty information by pattern.

Digital Swatch Card Color Matching: Due to color variations on different monitors and color printers, actual swatch colors may vary slightly. Please request a memo sample from Mayer Fabrics to ensure proper color representation.

Complete and current product information available at mayerfabrics.com.



FITZ



These fabrics meet or exceed these ACT performance guidelines.
Certification Marks owned by ACT

©2024
HMCDCDD MF0224

HEKMAN
CONTRACT

T 616.748.2660
hekmancontract.com

MAYERFABRICS

T 800.428.4415 mayerfabrics.com
500 S. Kitley Ave. Indianapolis, IN 46219