



# User Guide

# Welcome

Roqed Science is high-quality visual and interactive software designed for the most effective subject learning.



# Table of Contents

Installation and Activation .....	2
Demo Mode .....	3
Main Screen Overview .....	4
Settings .....	5
Interactive Animations. Control .....	6
Interactive Animations. Interface .....	7
Interactive Animations. Duplicate Functions .....	8
Interactive Animations. Drawing .....	9
Interactive Animations. Quiz .....	10
Interactive Animations. Report Saving .....	11
Study of Structure. Interface .....	12
Study of Structure. Disassembly and Interaction .....	13
Study of Structure. Auto-Exploration and Auto-Questions .....	14
Study of Structure. Auto-Questions .....	15
Roqed Student .....	16
Roqed Student. Connecting to Interactive Board .....	17
Contact Information .....	18

# Installation and Activation

To install the application, follow these steps:

Click on the provided link to download the installation file.

Once downloaded, locate the file in your download folder and run the installer. During installation, you can choose your preferred language and installation path.

The installation process may take several minutes to complete.

After installation, the ROQED Science application will automatically launch.

Upon the initial program launch, an "Activation" window will appear. Enter the 20-character activation key, which you can obtain on the website: [Website URL].

The screenshot displays the ROQED Science website interface. At the top, the text "ROQED Science" is followed by the tagline "Enhance teaching and learning". Below this, there are navigation links for "For Windows" (highlighted in orange), "For Android", and "License types". The main content area is divided into two columns: "Minimum" and "Recommended". Each column lists system requirements with corresponding icons: a lightning bolt for processor, a diamond for graphics, a trash can for RAM, an envelope for OS, and a hard drive for storage. At the bottom of each column is a "Download now" button. Below the columns, there are links for "Starter guide" and "User Manual".

Minimum	Recommended
Intel Core i3 6700	Intel Core i5 7600
Intel HD Graphics 530	Nvidia GTX960
4 Gb RAM	8 Gb RAM
Windows 10 64-bit	Windows 10 64-bit
128 Gb HDD (for soft)	128 Gb SSD

## Demo Mode

In the demo mode, you have access to 7 trial lessons. The remaining lessons are available only in the paid version and can be identified by a lock icon.

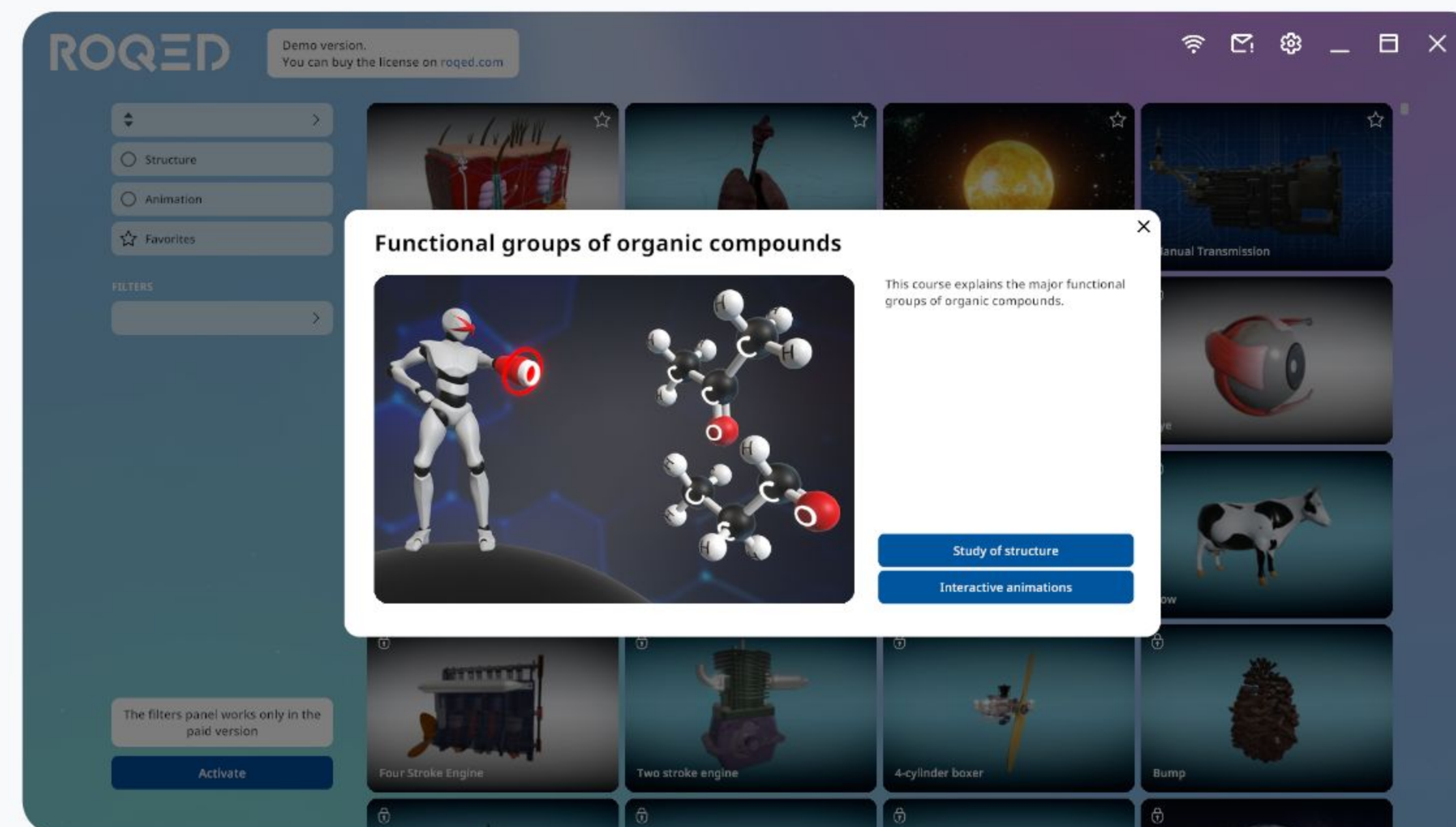
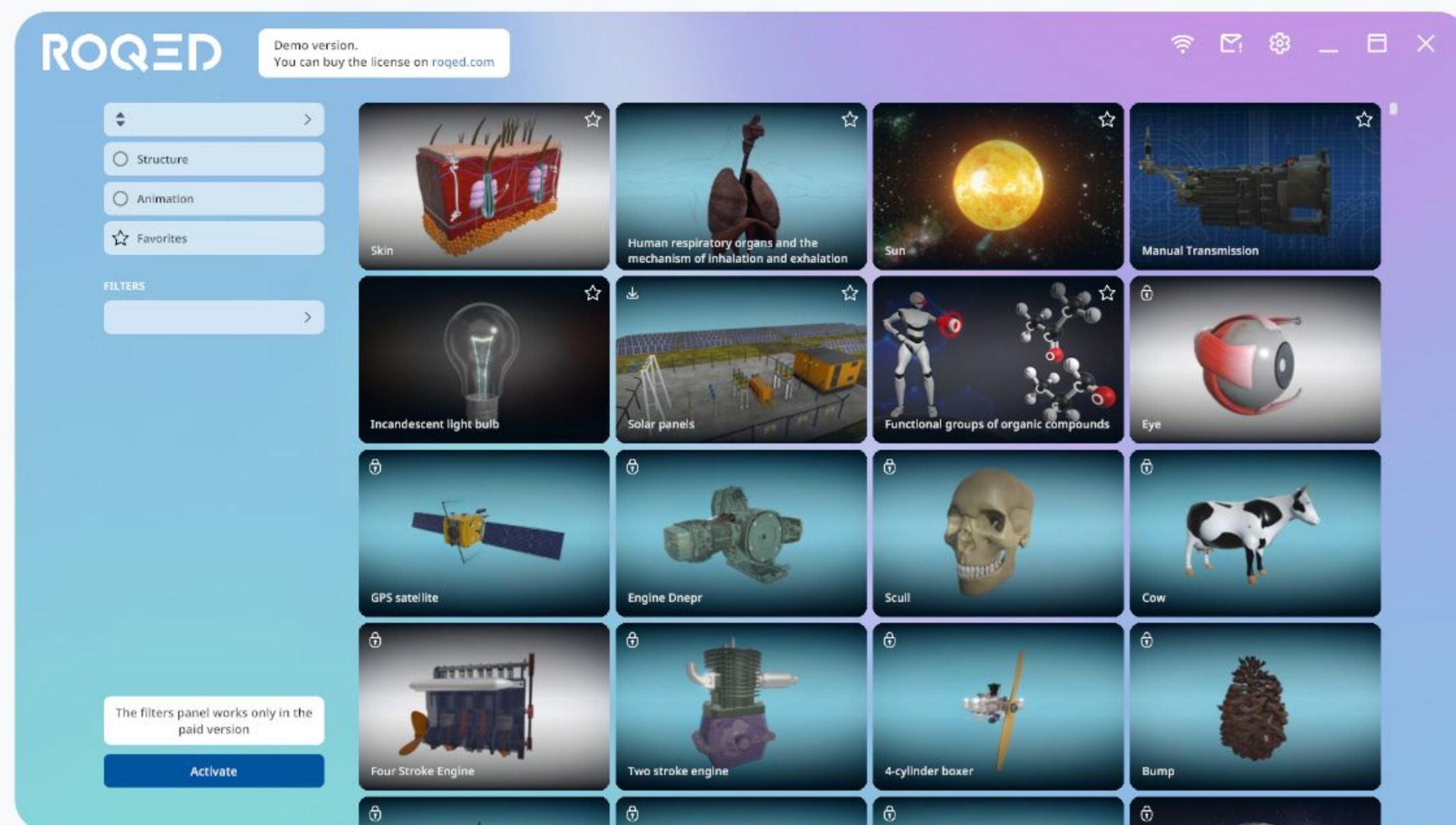
Filters and sorting options located on the left will be active only when using the paid version.

You can access lessons that consist of two types of content: Interactive Animations and Study of Structure.

Interactive Animations allow you to play animated videos accompanied by voice explanations.

Structural Study enables you to analyze, rotate, and explore models from different perspectives.

For more detailed information about each of these content types, please refer to the following sections.



# Main Screen Overview

In the paid version, on the main page, you will find all the available lessons along with filter located on the left-hand side of the panel.

To download courses and play audio, you will need to switch to the "Online" mode. In case of slow internet connection, you can use the "Offline" mode.

- Offline mode
- Technical support
- Settings
- Minimize the application
- Full-screen / windowed mode
- Close the application / lesson

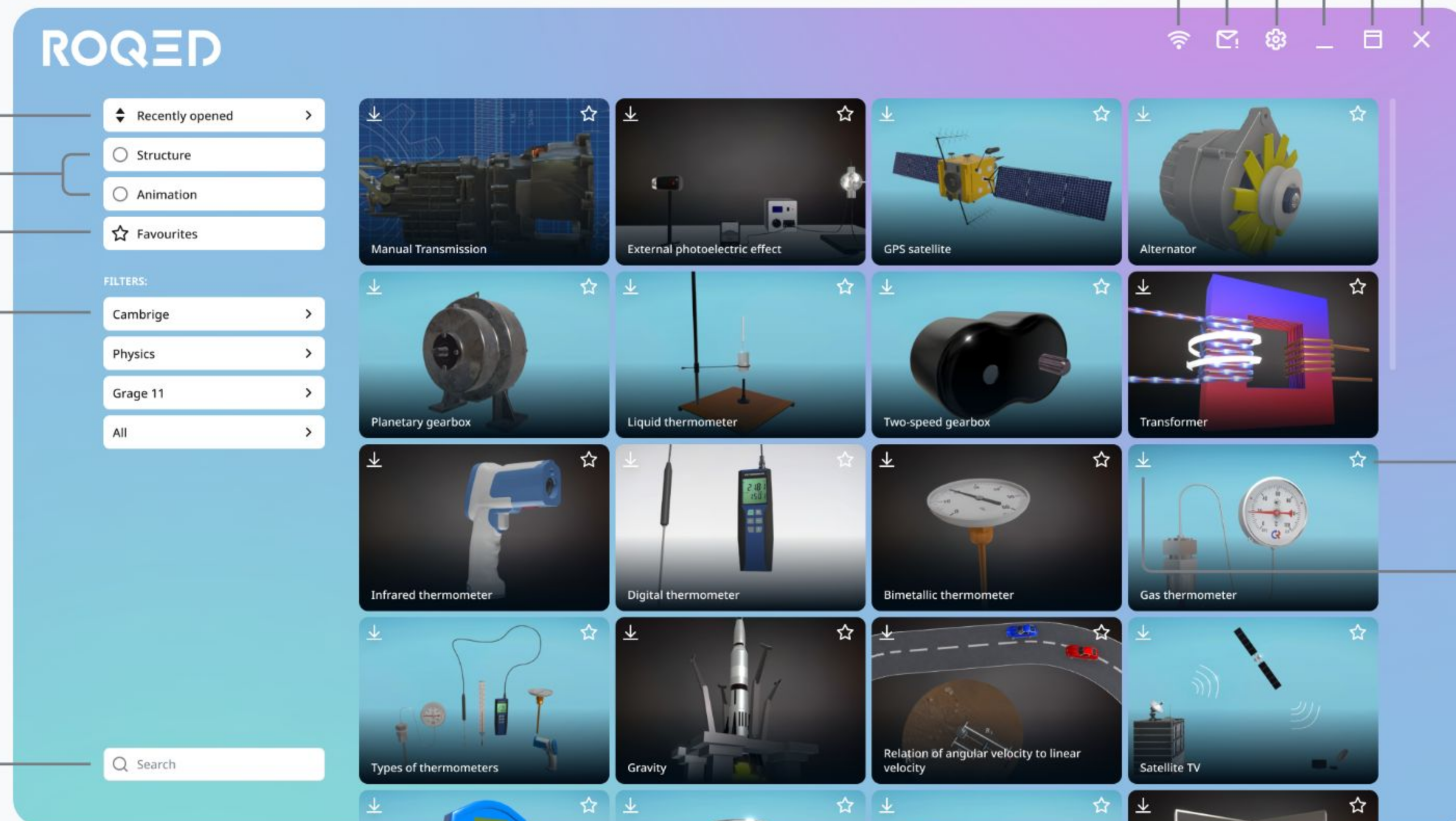
Sorting

Sorting by content type

Favorite lessons

Filters for all libraries

Search across all libraries



Add lesson to favorites

Download lesson

# Settings

In the settings window, you can configure the following options:

Adjust the language of the interface to your preference.

Determine where to save reports after completing tests.

Optimize screen resolution and graphics quality for better performance on lower-end devices.

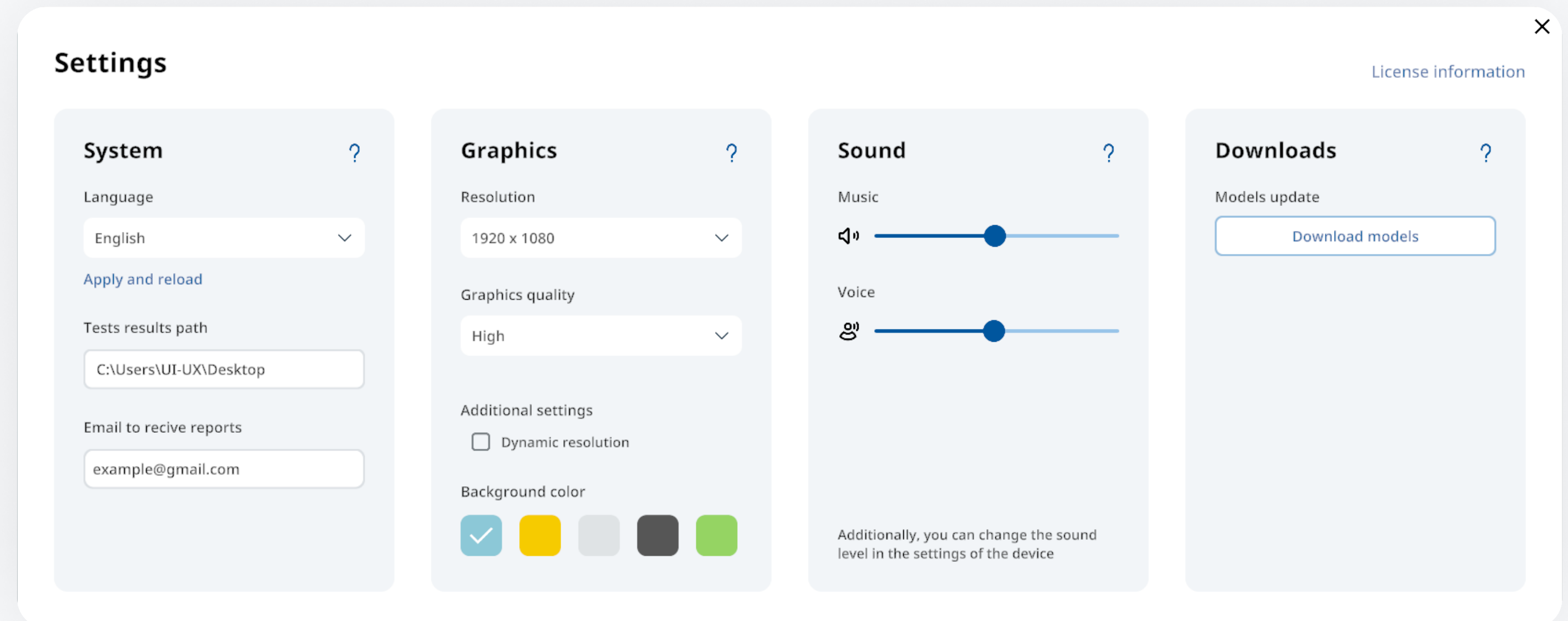
Customize the background color to enhance your application experience.

**Dynamic Resolution:** Enable this feature for automatic graphics adjustments based on your device.

In the sound settings section, you can:

Adjust the music and voice volume to match your preferences. Additionally, you can fine-tune sound levels in your device settings if needed.

Pressing the button will open the Downloads window, where you can select the necessary lessons for updates.



# Interactive Animations

This mode serves as a powerful tool for visually explaining various processes, such as laws, phenomena, and device principles.

The system plays animated videos, accompanied by synthesized voice narration, ensuring a comprehensive understanding of the material.

The animation mode is available only on specific models.

## Control



### Camera Rotation

On the interactive panel: Use a single finger to touch and move it in the desired direction to rotate and inspect objects from different angles.

On the computer: Hold the right mouse button and move it in different directions.



### Camera Movement

On the interactive panel: Use two fingers to move the camera in the desired direction.

On the computer: Hold the right mouse button.



### Camera Zoom In/Out

On the interactive panel: Spread or pinch two fingers on the panel to zoom in or out.

On the computer: Scroll the mouse wheel.



### Reset Camera to Default

Double-click on empty space to reset the camera to its default position.

# Interface Overview


Drawing Mode

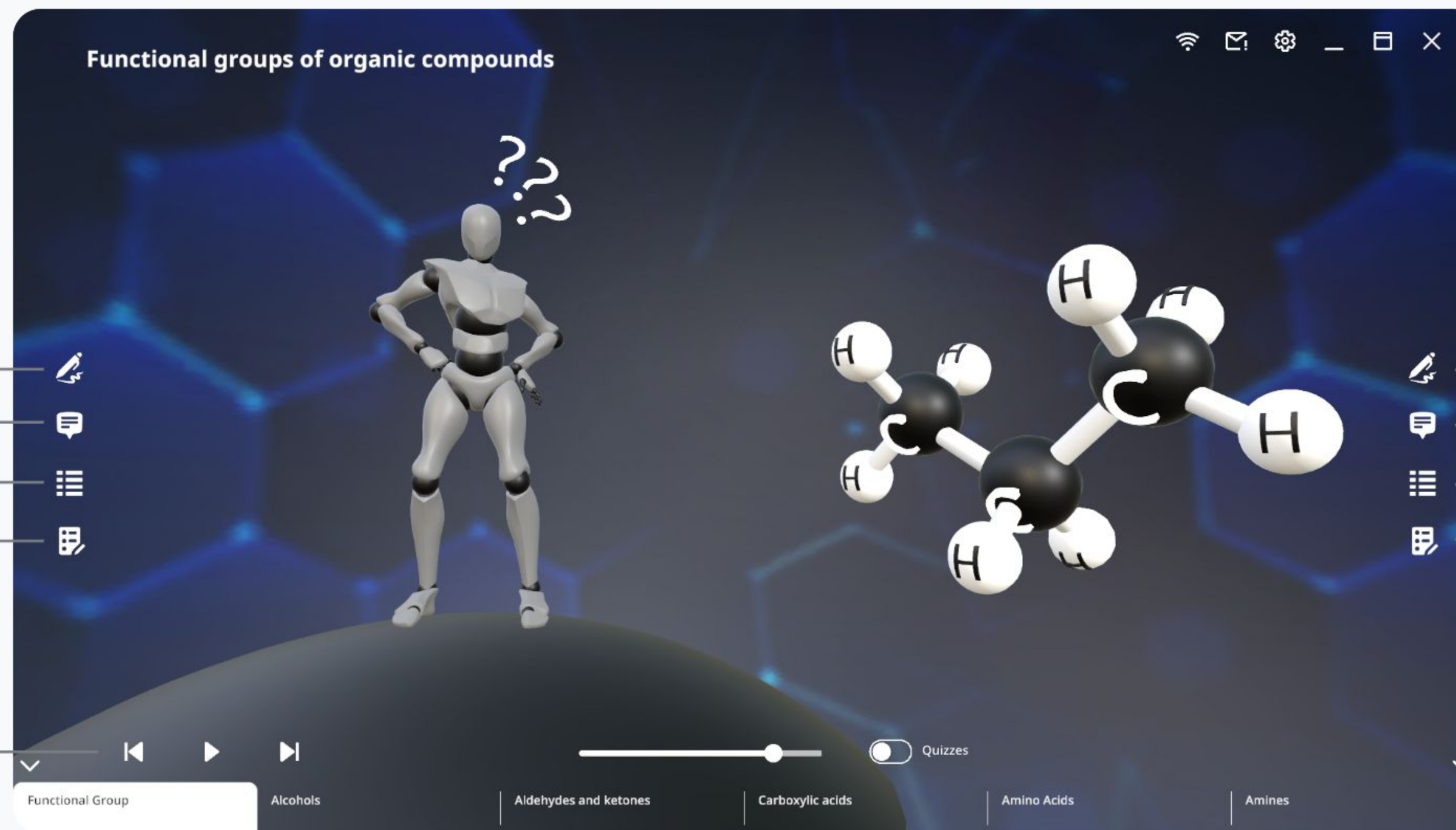
Object Descriptions

Animation Frame List

Topic-Related Questions

Pause / Play and Forward / Backward Buttons

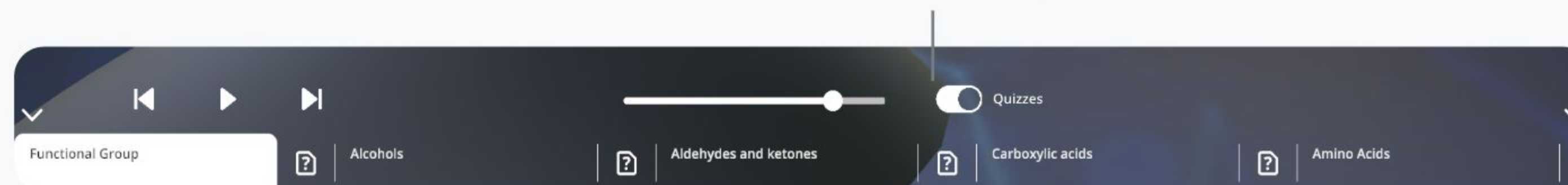
You can move these buttons to the right by clicking the "Frame List" button on the right 



Buttons are duplicated on both the left and right sides for ease of use on an interactive panel.

You can hide the animation frame panel.

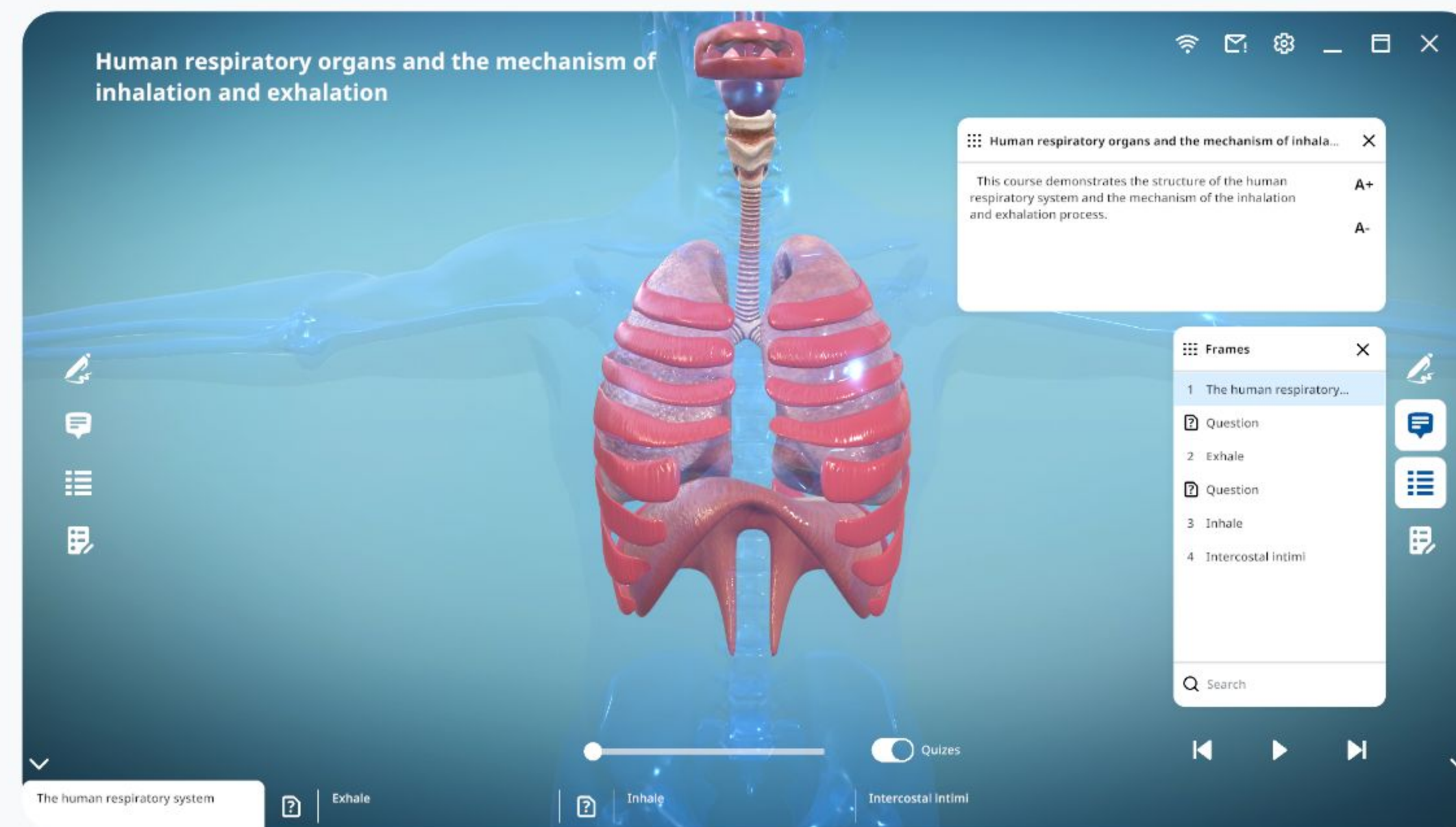
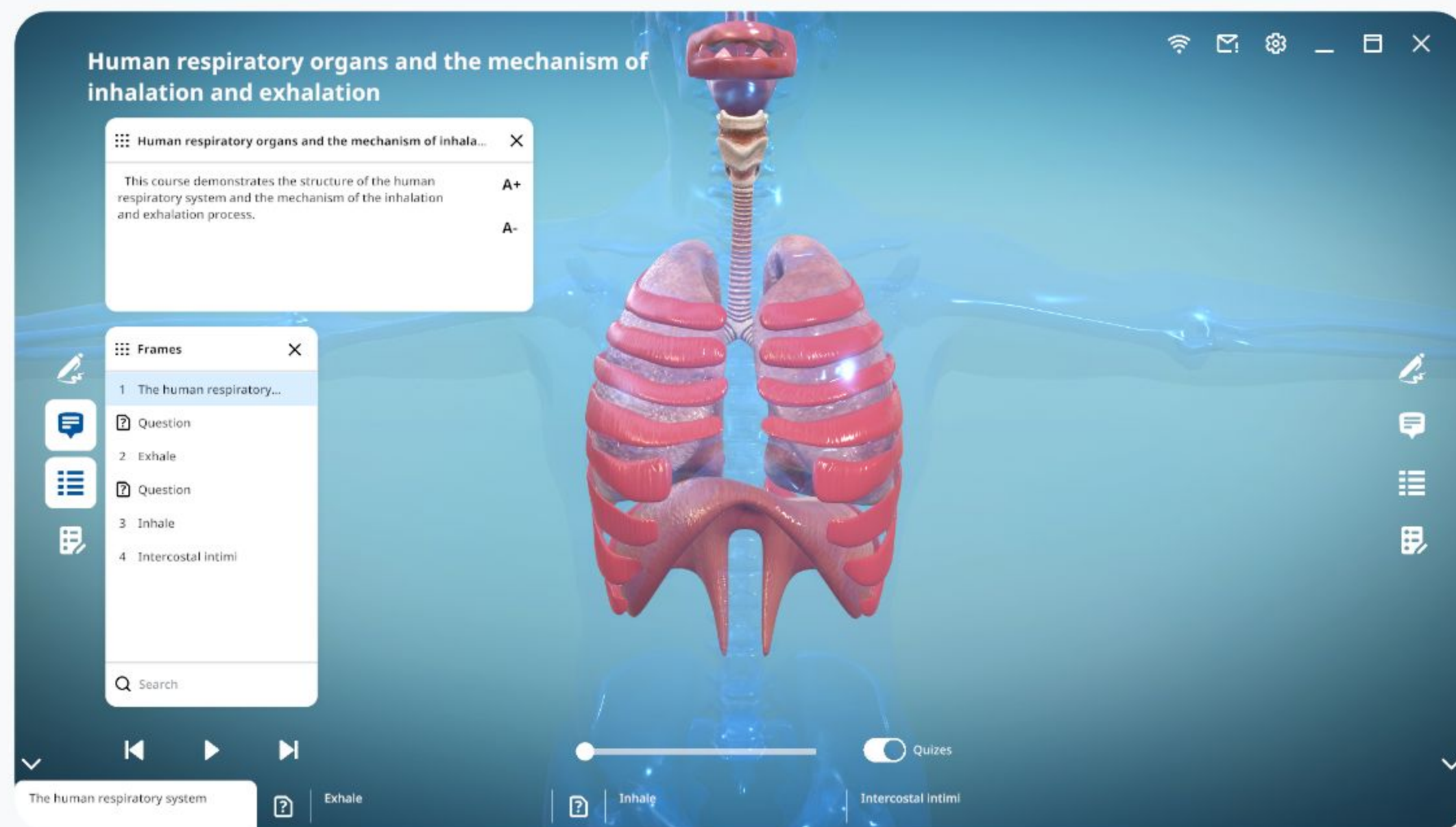
By enabling "Quizzes," questions related to the previous frame will appear between animation frames to reinforce the topic.





# Function Duplication on the Left and Right

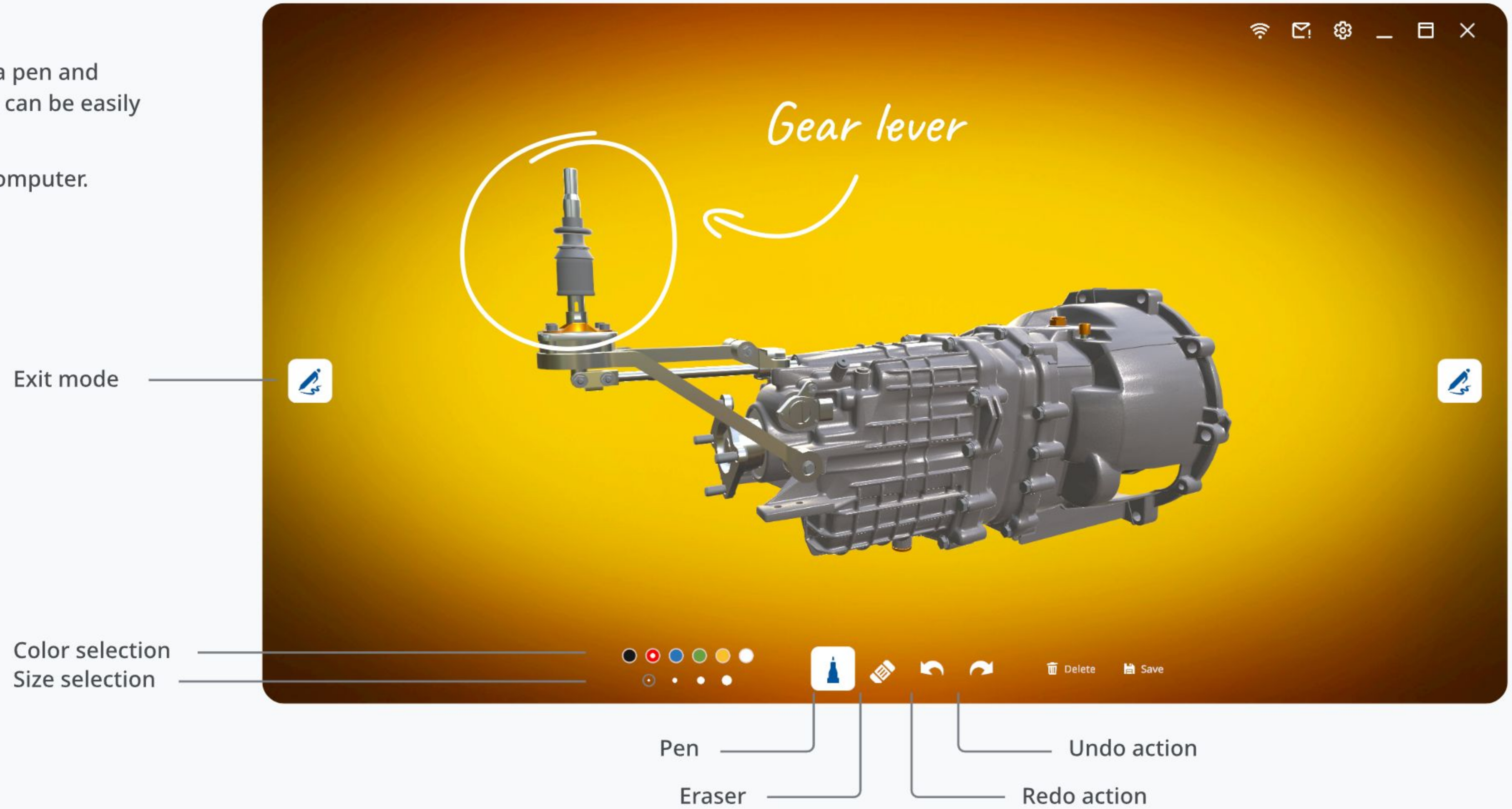
Depending on which side of the board you are on, you have quick access to the main functions.



# Drawing

In drawing mode, you have access to a pen and an eraser. The line color and thickness can be easily adjusted.

You can also save the image to your computer.



# Quiz

In each lesson, there are several questions of two types to reinforce the topic: questions with 4 answer options, and questions with 2 options - True / False.

Under the development is the Multi-Quiz mode, where students can be connected to the interactive board and collectively take the quiz in the Roqed Student mobile app.



## Take a Quiz

✕

Choose the type of the quiz. After completion, you can save the report.

---

👤

**Single Mode Quiz**

Questions related to the completed lesson.

---

👥

**Multi-Quiz SOON**

Connect to the board via the mobile app. All students need to be connected to the same Wi-Fi network.

## Saving Reports

After completing a quiz and exiting the lesson, the system will prompt you to save the results as a PDF report.

### Save test results?



**First Name:** Isabella  
**Group/Class:** 9  
**Date:** 11-09-2023 10:31  
**Time spent:** 00:31  
**Category:** Biology  
**Model:** Adrenalin

Test name	Correct answer	User answer
Is the following statement correct? The primary fastest reaction is carried out by the nervous system, after which the slower reaction of the endocrine system takes over.	true	true
Choose a second name for the hormone adrenaline.	Epinephrine	Norepinephrine
Name a couple of organs in which the hormone adrenaline is secreted	adrenal glands	Kidneys
Note what does NOT happen to the heart under the influence of adrenaline.	Increased release of blood from the ventricles into the atria	The heartbeat is racing
Is the following statement true? Under the influence of adrenaline, the blood supply to the digestive system decreases, which slows down the metabolism.	true	true
Accelerating the transport of which substances, is the purpose of rapid breathing in a situation of stress to the muscle cells?	glucose and oxygen	urea

# Study of Structure

This mode represents a sandbox of a virtual 3D world. Teachers and students can analyze, rotate, and explore models from any perspective. The exploration mode provides a full kinesthetic learning experience.

The screenshot shows a 3D model of a drone (quadcopter) in a virtual environment. The interface includes a title bar at the top with the text "Drone (Quadcopter)" and standard window controls (Wi-Fi, mail, settings, minimize, maximize, close). On the left side, there is a vertical toolbar with icons for Drawing Mode, Object Descriptions, Object List, Model Disassembly, Interaction, and Auto-Questions. At the bottom left, there are "Pause/Play and Forward/Backward Buttons" and a note: "You can move these buttons to the right by clicking the 'Object List' button on the right". On the right side, there is a mirrored vertical toolbar with the same icons as the left side. A bracket on the right side of the interface indicates that "Buttons are duplicated on both the left and right sides." At the bottom center, there are camera controls including a "Camera" label, a "reset" button, a "x2" zoom indicator, and a play/pause button.

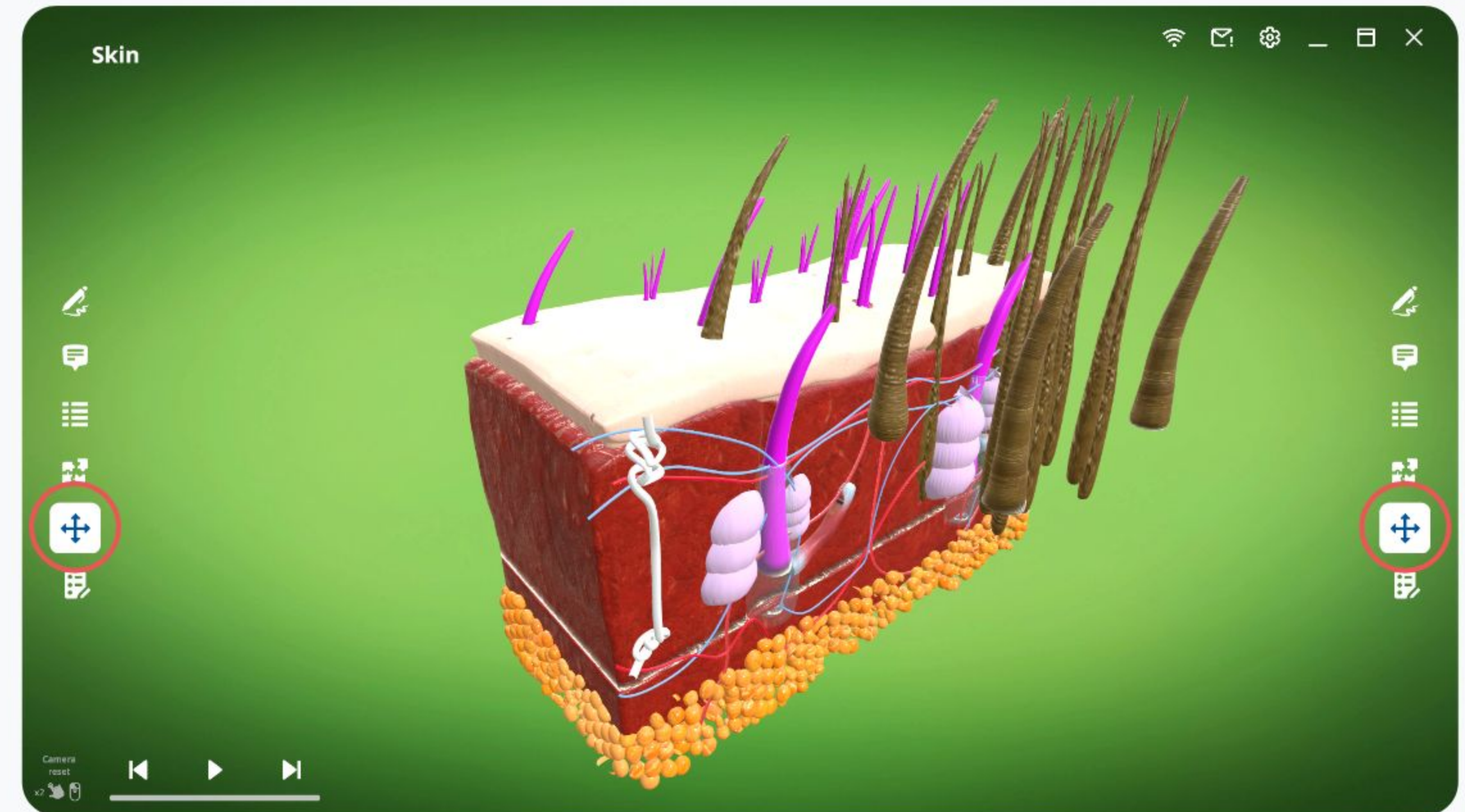
# Disassembly

Disassemble the model into individual components, rotate, zoom in, and examine all the small details.



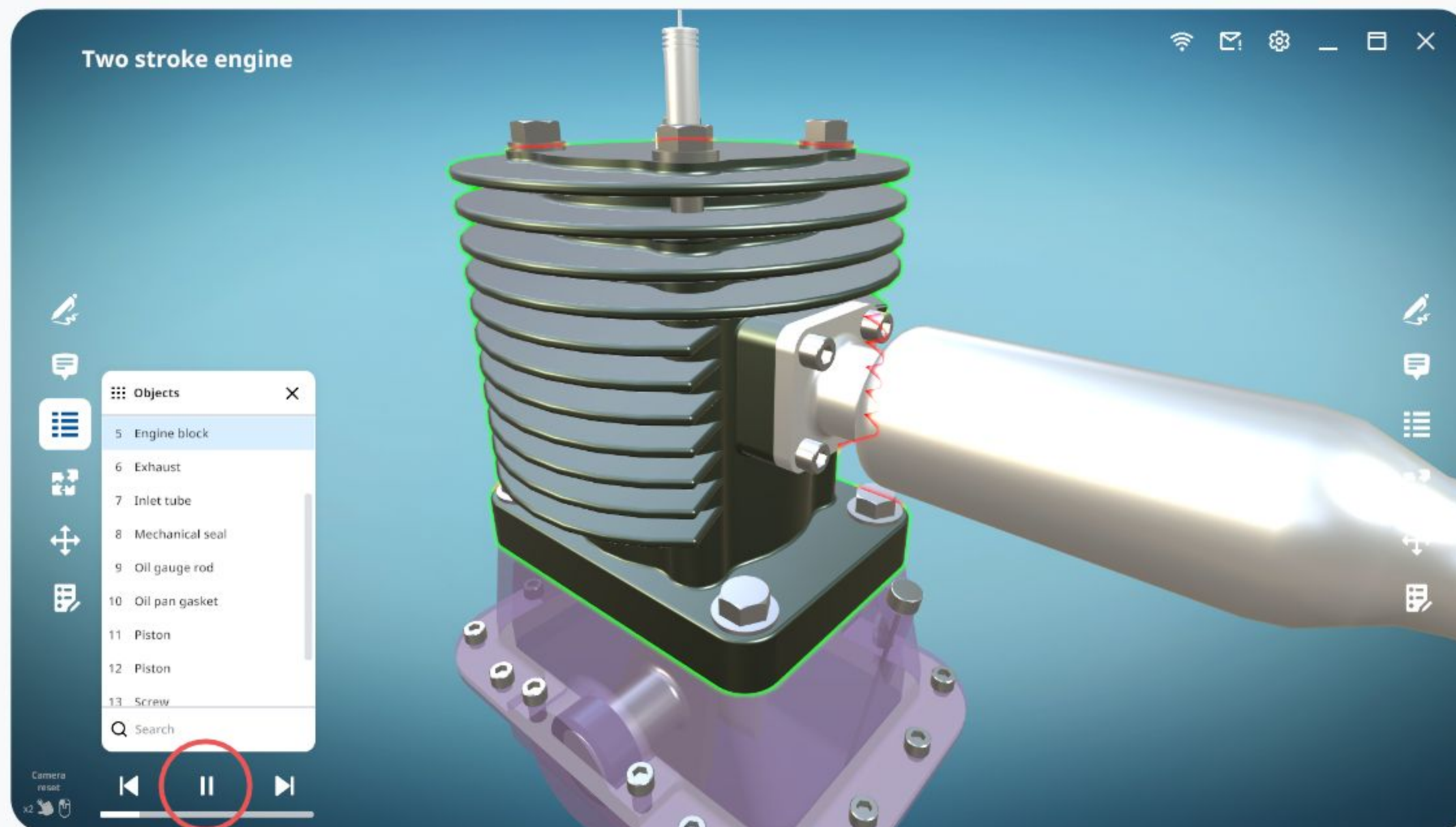
# Interaction

Interact with each part of the model.



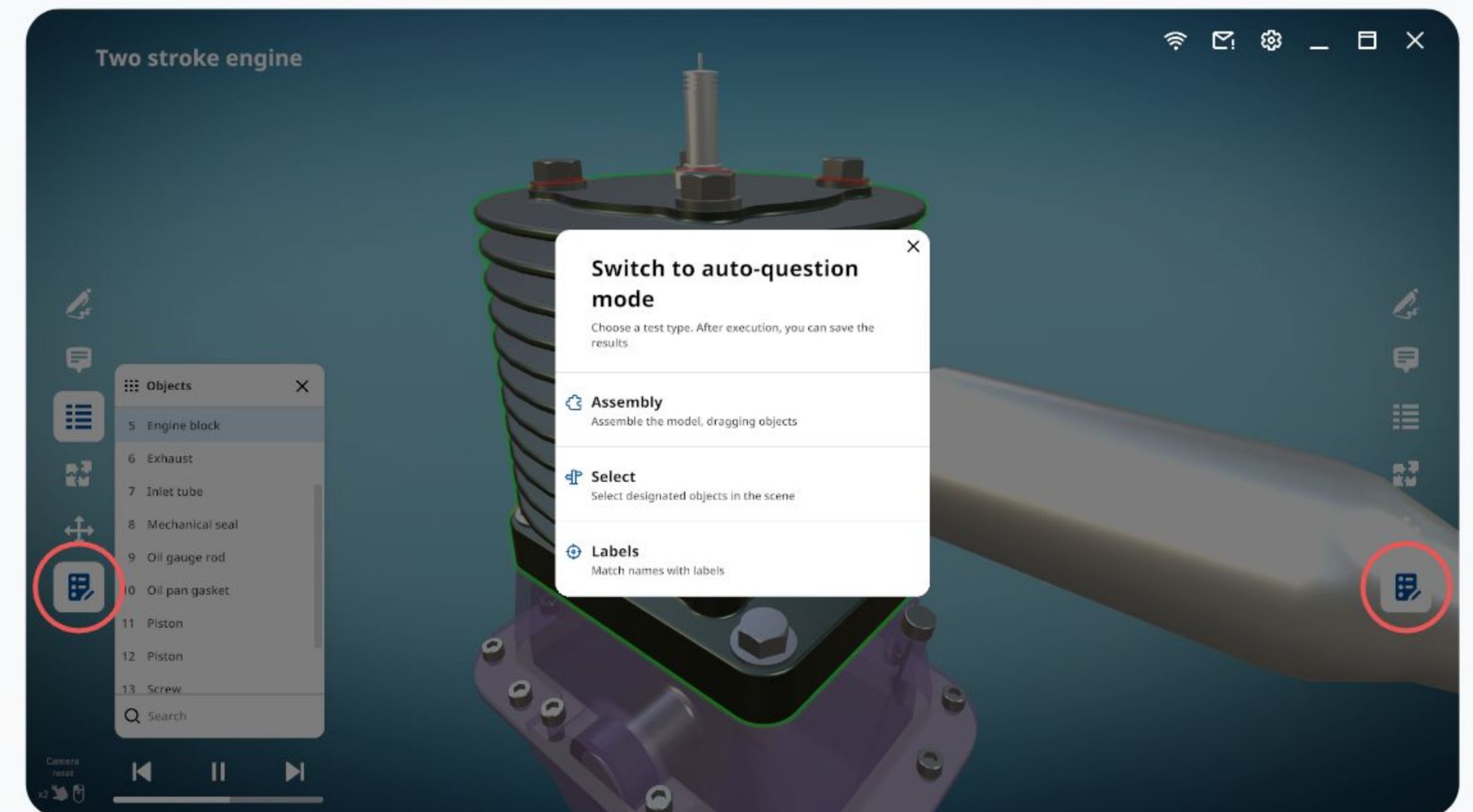
## Auto-Exploration

Initiate auto-exploration by clicking the "Play" button. The camera will orbit around objects from all angles, while the off-screen voice will provide descriptions of each object.



## Auto-Questions

To reinforce the learned topic, you can use the following three types of tasks: Assemble, Select, and Label.



# Auto-Questions

## Assemble

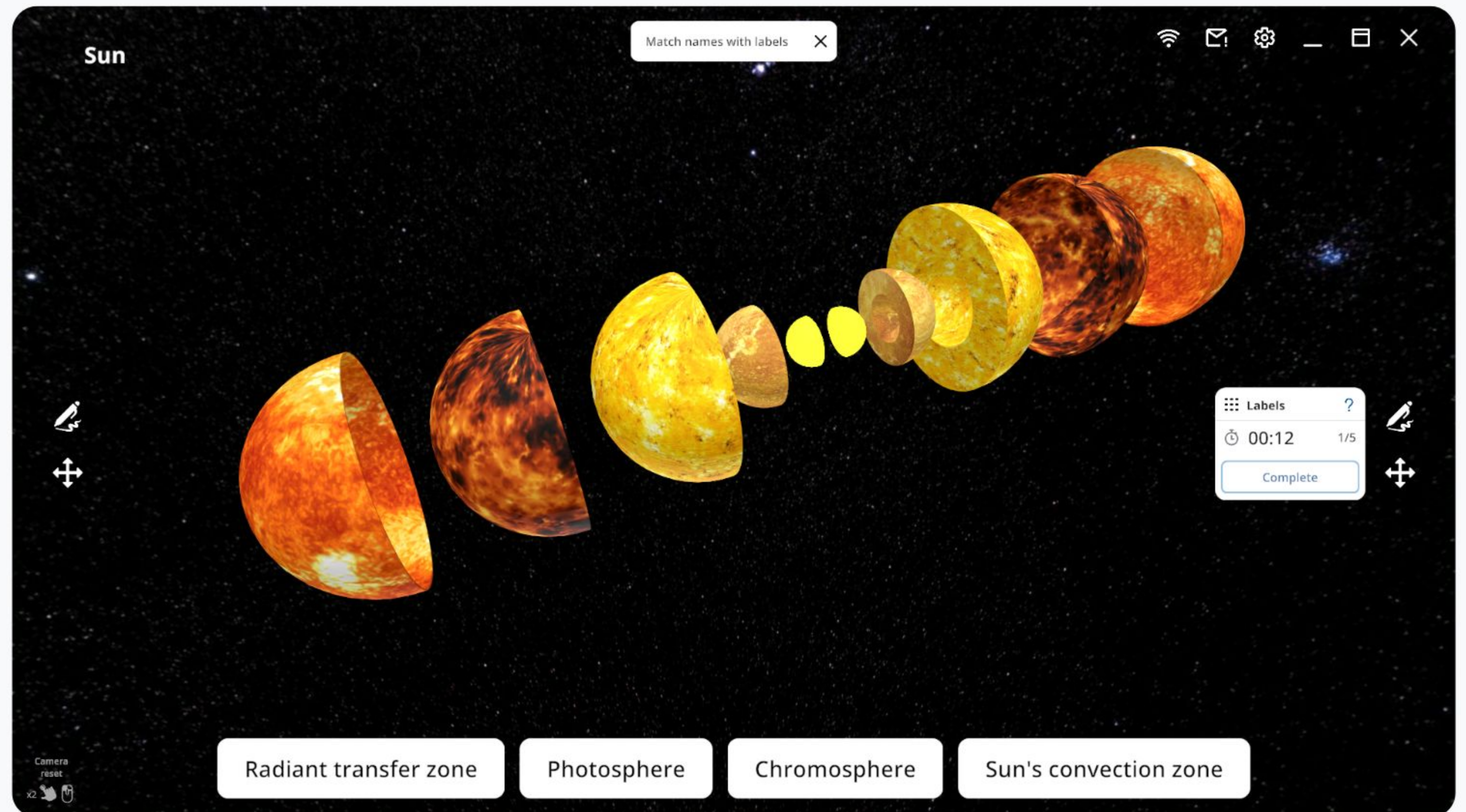
Students are tasked with assembling the model by dragging its parts into place.

## Select

In this type of task, students need to select the designated objects in the scene.

## Label

In this type of task, students are asked to match names with objects on the scene.



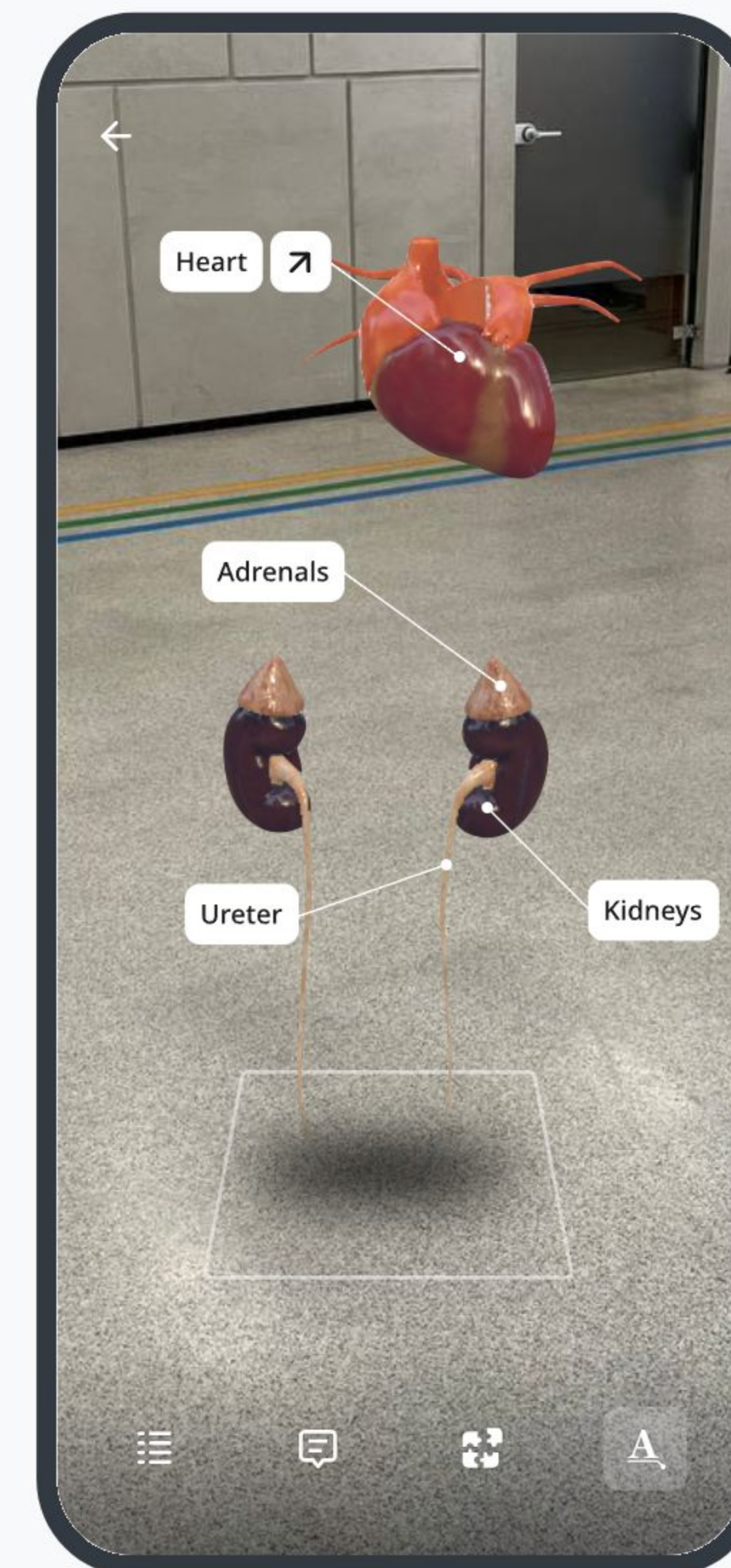
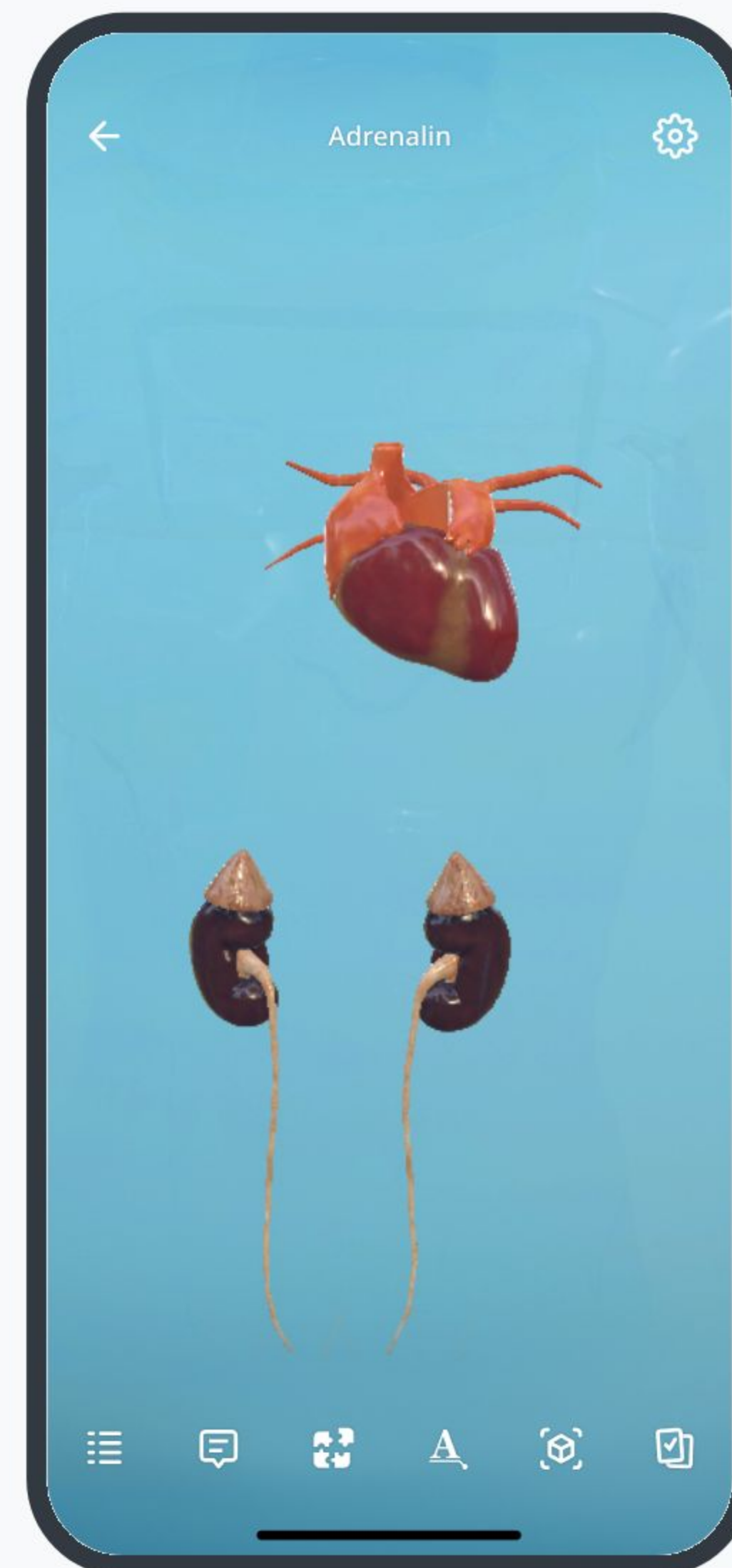
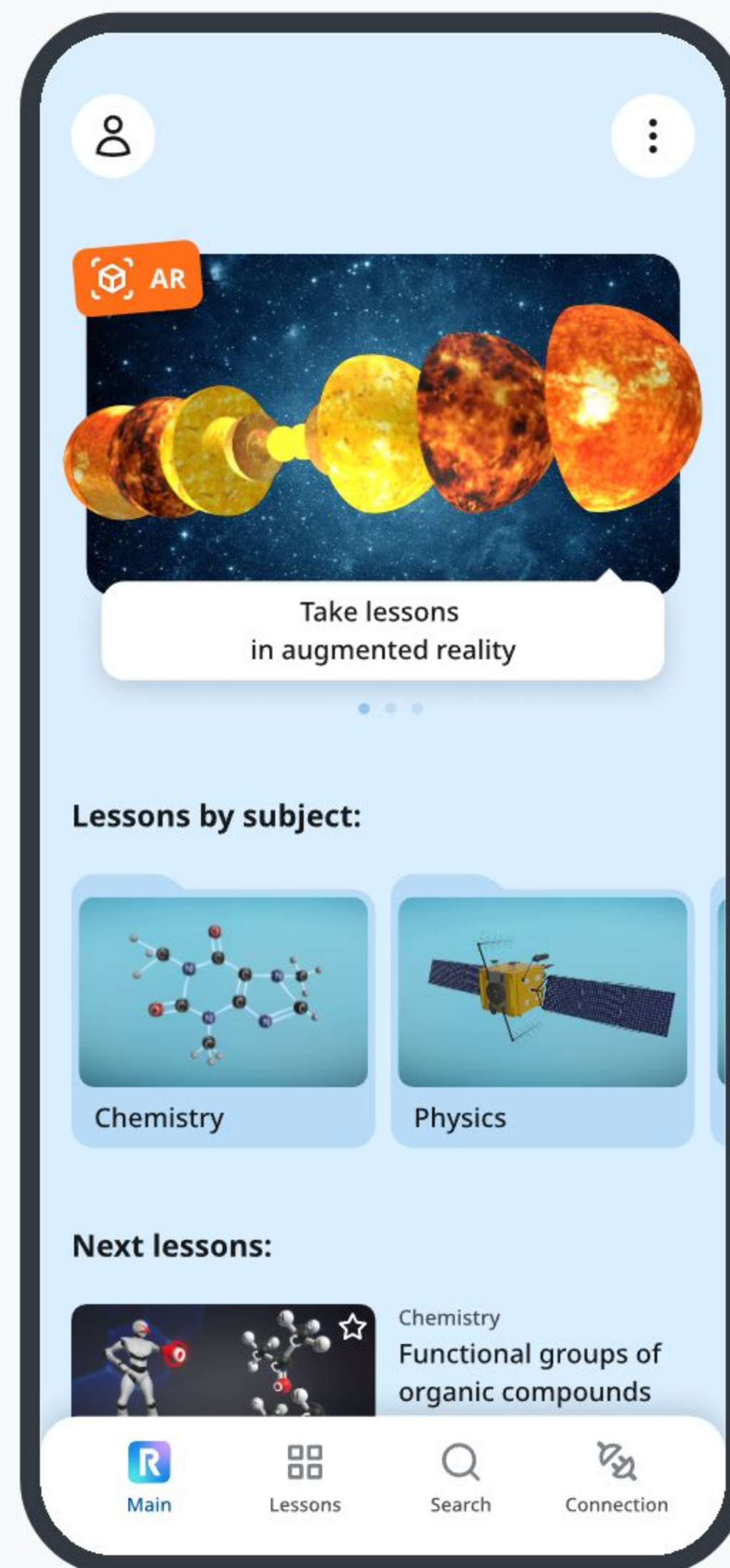




## Roqed Student

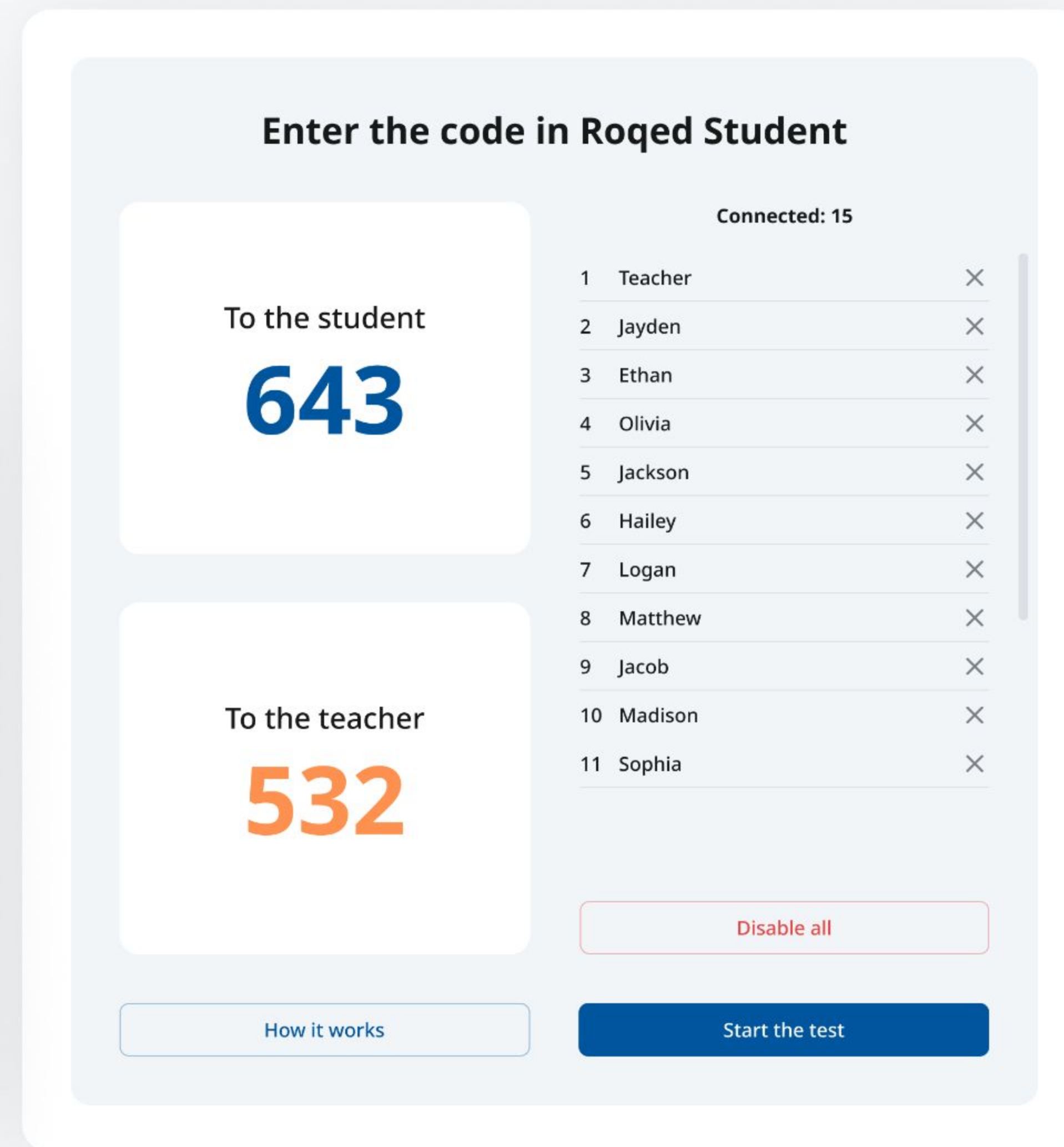
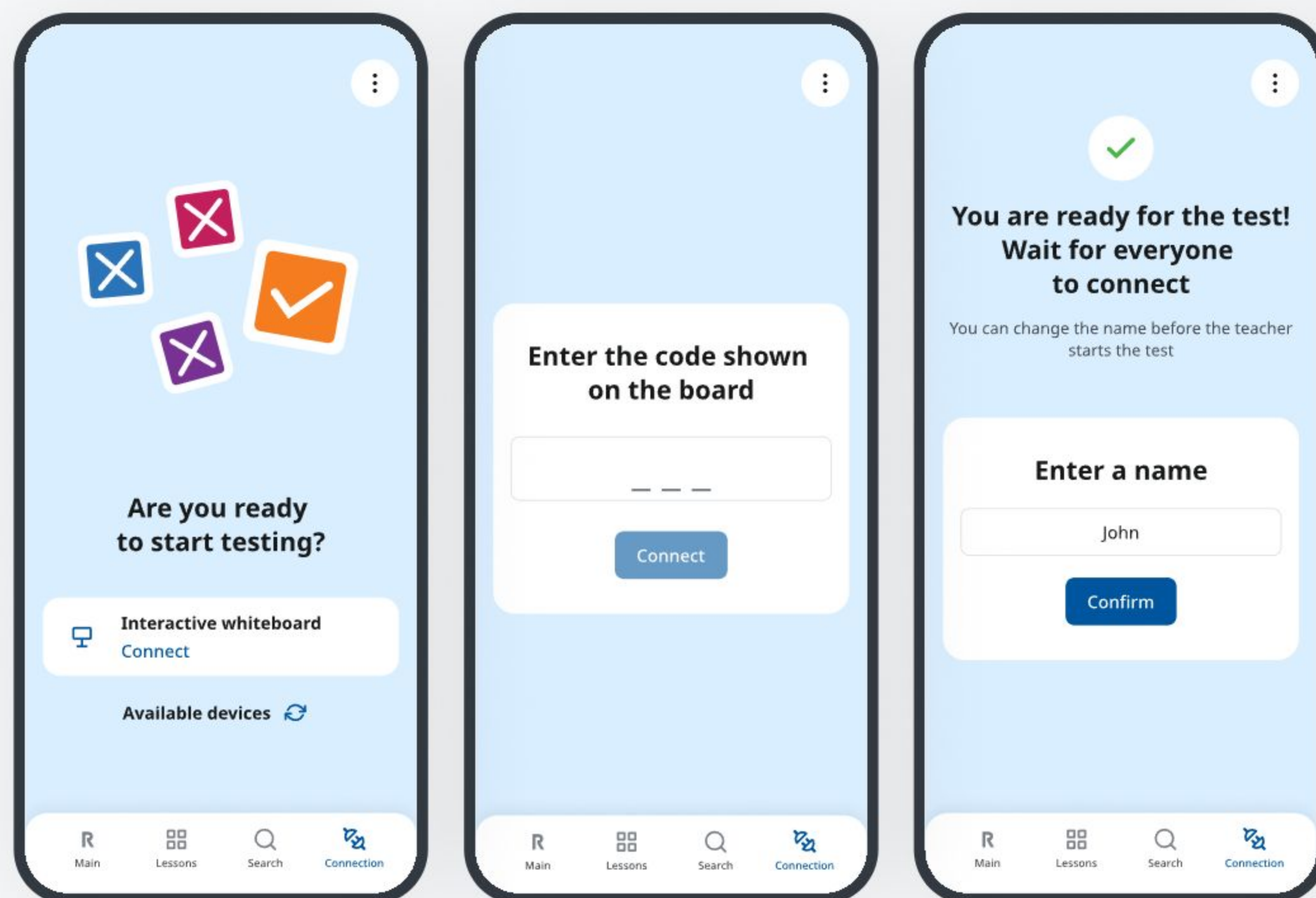
We are currently developing the Roqed Student mobile application, which provides access to all lessons from the desktop version.

In this app, we have implemented augmented reality technology, allowing you to project virtual objects into the real world.



# Connecting to the Interactive Board

Using the Roqed Student app, you can connect students to the interactive board for collaborative test-taking.





Visit [www.roqed.com](http://www.roqed.com) for more information

Contact us by email: [info@roqed.com](mailto:info@roqed.com)