

SAMYANG OPTICS CO., LTD.

www.xeenglobal.com

Instruction Manual

사용설명서

XEEN™

Exchangeable lens mount set

XEEN™

Exchangeable lens mount set

How to disassemble current mount

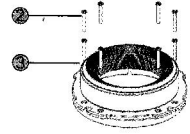
In order to disassemble mount assembly from the lens, untie the screw of each mount

(PL Mount – # 2 Screw / Canon Mount – # 4, 6 /

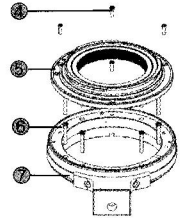
Nikon Mount – # 8, 10 /

Sony E Mount – # 6, 12 /

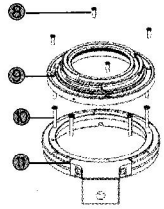
MFT Mount – # 6, 14)



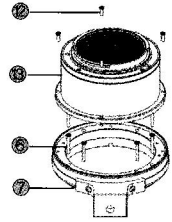
PL MOUNT



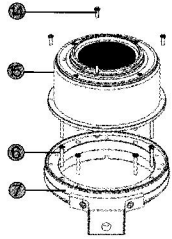
CANON MOUNT



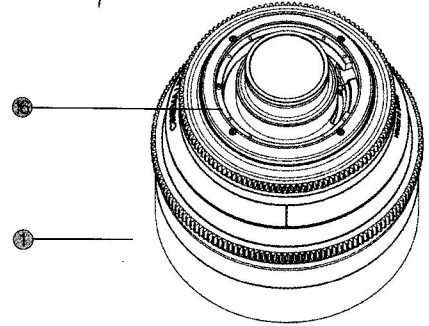
NIKON MOUNT



SONY E MOUNT



MFT MOUNT



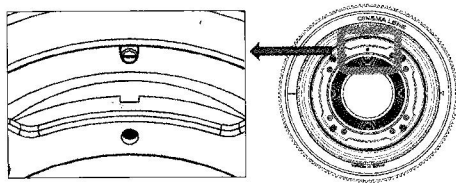
1. LENS
2. PL MOUNT SCREW
3. PL MOUNT ASS'Y
4. CANON MOUNT SCREW
5. CANON MOUNT ASS'Y
6. CANON ADAPTER SCREW
7. CANON ADAPTER ASS'Y
8. NIKON MOUNT SCREW

9. NIKON MOUNT ASS'Y
10. NIKON ADAPTER SCREW
11. NIKON ADAPTER ASS'Y
12. SONY E REAR BARREL SCREW
13. SONY E MOUNT ASS'Y
14. MFT REAR BARREL SCREW
15. MFT MOUNT ASS'Y
16. SHIM (PUNT RING)

How to assemble each mount

1. PL MOUNT

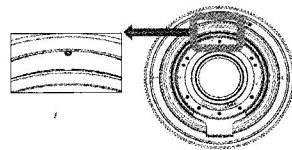
- ① Align the position markers on the Mount assembly and the Lens as the following picture.



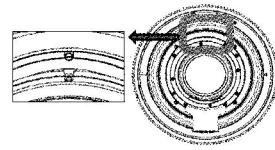
- ② Tighten PL mount screw with cross-type (Phillips) driver.
Caution) Please pay attention not to touch the Punt Ring by the screw.
- ③ After assembling the Mount, adjust punt according to the instruction at <Punt adjustment after mount assembly>.

2. Canon/Nikon Mount

- ① Align the position markers on the Mount assembly and the Lens as the following picture.

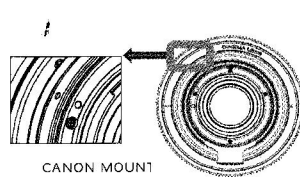


CANON MOUNT

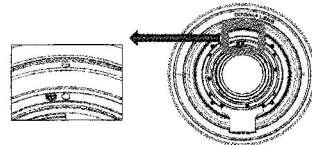


NIKON MOUNT

- ② Tighten adapter screw with cross-type (Phillips) driver.
Caution) Please pay attention not to touch the Punt Ring by the screw.
- ③ Tighten mount screw with cross-type (Phillips) driver after aligning the red dot on Mount and white dot on the side of Adapter assembly as the following picture.



CANON MOUNT

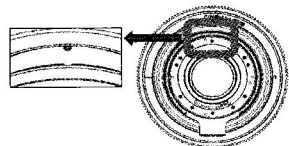


NIKON MOUNT

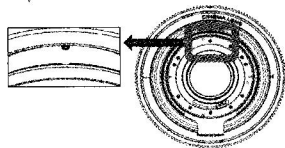
- ④ After assembling the Mount, adjust punt according to the instruction at <Punt adjustment after mount assembly>.

3. Sony E / MFT Mount

- ① Align the position markers on the Mount assembly and the Lens as the following picture.



SONY E MOUNT

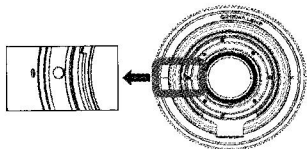


MFT MOUNT

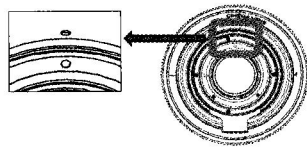
- ② Tighten adapter screw with cross-type (Phillips) driver.

Caution) Please pay attention not to touch the Punt Ring by the screw.

- ③ Tighten mount screw with cross-type (Phillips) driver after aligning the red dot on Mount and white dot on the side of Adapter assembly as the following picture.



SONY E MOUNT

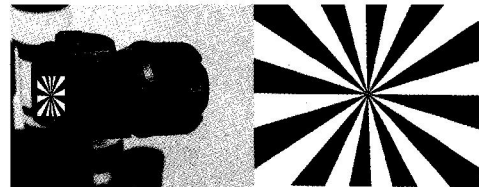
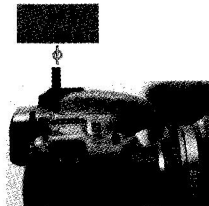


MFT MOUNT

- ④ After assembling the Mount, adjust punt according to the instruction at <Punt adjustment after mount assembly>.

Punt adjustment after mount-assembly

1. Check and adjust the focus placing the subject at 4 feet position.

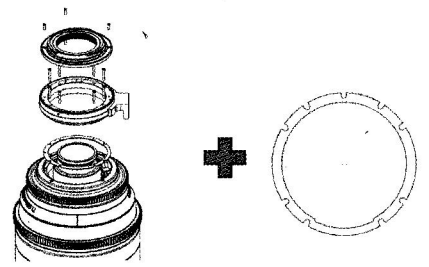
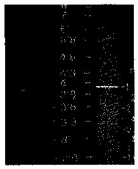


- ① When the indicator is at the right position, Shim (Punt Ring) should not be added.



Shim (Punt Ring)	
Thickness(mm)	Color
0.1	Yellow
0.05	SUS Silver
0.03	SUS Silver
0.02	SUS Silver

② If the indicator is at the following position, Shim should be added as the following picture after disassembly Mount and Adapter.



③ If the indicator is at the following position, Shim should be removed as the following picture after disassembly Mount and Adapter.

