



RACING GUIDELINE

WINTER 23/24

HEAD
.COM

WHAT'S NEW?

SPEEDBLUE

A new color represents a new era.

Our new accent colour is Speed Blue, developed by HEAD's design team in Austria. Symbolic of what HEAD represents, Speed Blue is fresh, dynamic and powerful, it stands for pure speed and progression, just like our Worldcup Rebels.

--> All models



Concave Sidewall

- Work and time saved in preparation.
- Sidewall planing no longer necessary.
- No unnecessary damage to the sidewall.
- Edge exposed for tuning.

--> All models

MODEL	FRONT (cm)	CENTRE (cm)	REAR (cm)	RADIUS (cm)	LENGTH (cm)	PLATE	FIS	EDGE-ANGLE	BASE STRUCTURE	BASE MATERIAL	INFRARED WAXING	WOOD CORE	MP (cm)						
WCR e-GS Rebel FIS	101	65	83	30,0	193	HEAD Race Plate WCR 14 BK SHORT	R>30	Side 88°	Structure 4 + Replaceable base strips	OKULEN 7150C	YES	ESCHE	83,0						
WCR e-GS Rebel FIS	98	65	84	30,3 31,0	188		R>30						81,5						
WCR e-GS Rebel FIS	99	65	81	30,5	183		R>30						79,0						
WCR e-GS Rebel PRO	107	68	87	28,0	191		R>27						81,5						
	104	68	89	27,0	189		R>23						82,0						
	104	68	89	25,4	183								79,0						
	106	68	90	22,0	177		75,5												
WCR e-GS Rebel	104	65	87	25,0	186		R≥25 / ≤65						80,5						
	102	65	86	25,0	181		R≥25 / ≤65						77,0						
	102	65	87	23,0	176		R>23 / ≤65						75,5						
	102	65	85	27,5	188	R>27 / ≤65	81,5												
	102	65	87	23,0	176	HEAD Race Plate WCR Team	75,5												
	102	65	86	25,0	181		81,5												
WCR e-SL Rebel FIS	119	68	103	12,8	168	HEAD Race Plate WCR 14 BK SHORT	L≥168	Base tuning 0,4°	Structure 4	P-TEX 2000 HC	YES	ESCHE	72,5						
	H8 120	67	66,5	104 103	12,3 12,5		L≥165						73,5						
	114	66	104	12,0	158		L≥158						68,0						
	114	66	100	12,4	156		L≥156						66,5						
WCR e-SL Rebel	111	65	96	11,9	151	≤65	63,0												
DH/SG																			
DH 218 Race Plate	92	65	80	50,0	218	HE DH 02		Side 88°	Structure 4	P-TEX 5920 E	YES	ESCHE	95,5						
DH 215 Race Plate	92	65	79	50,0	215								94,5						
DH 210 Race Plate	91	65	78	50,0	210								91						
SGM 213 Race Plate	95	65	79	45,0	213								93						
SGL 207 Race Plate W	95	65	80	42,0	207								Base tuning 0,6°	89,5					
SGM 207 Race Plate M	93,5	65	78	45,5	207									89,5					
SGL 202 Race Plate	95	65	79	40,5	202								HEAD Race Plate WCR 14 BK SHORT		Structure 4	P-TEX 5920 E	YES	ESCHE	88
SG 200 RP WCR 14	97	65	81	36,0	200														87
SG 195 RP WCR 14	98	65	82	33,0	195														84,5
SG 185 RP WCR 14	98	65	81	30,0	185														79,5
SG 175 RP WCR 14	93	65	82	27,0	175	74,5													
JUNIOR																			
WCR e.GS Rebel Team	104	65	88	21,0	173	HEAD Race Plate WCR Team	≤65 R>17	Side 88°	Structure 3	OKULEN 7150C	NO	BUCHE	74,0						
	105	65	89	18,5	166								71,5						
	104	64	87	17,2	159								69,0						
	101	64	85	17,2	152								65,5						
	104	64	87	14,2	145		≤65 R>14						62,0						
	101	64	84	14,2	138								58,5						
	97	63	80	14,2	131								56,0						
	94	63	78	14,2	124								52,0						
WCR e.SL Rebel Team	114	65	99	12,0	156	≤65	Base tuning 1,0°	Structure 3	OKULEN 7150C	NO	BUCHE	65,5							
	110	64	94	12,1	150							62,5							
	110	64	94	11,0	144							59,5							
	110	63	93	9,0	138							56,5							
	110	63	93	9,0	132							54,5							
	108	62	91	8,5	126							52,0							
	105	62	89	8,0	120							49,5							

EDGE ANGLES

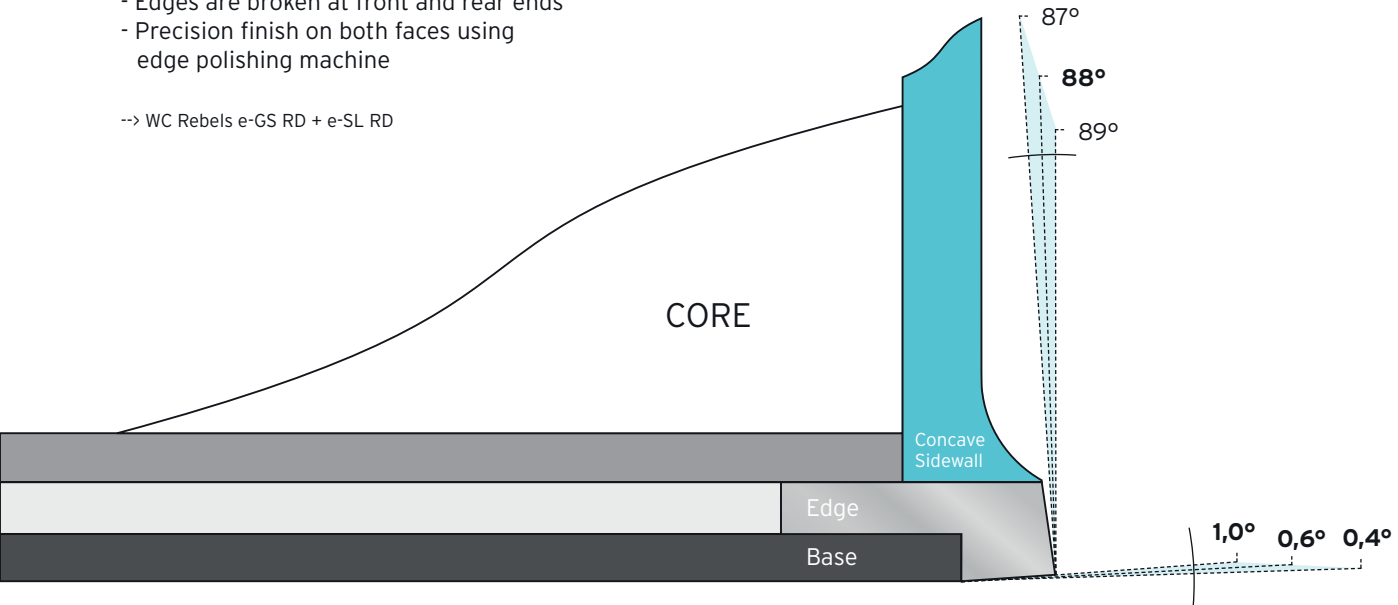
Edge angles:

Side: 88°

Below: 0.4° / 0.6° / 1.0°

- Edges are broken at front and rear ends
- Precision finish on both faces using edge polishing machine

--> WC Rebels e-GS RD + e-SL RD



BASE STRUCTURE

Structure 3 + 4

A stepped cut is used for these structures so that the structure/cut is only as wide as the centre width of the ski. The advantage is that the structure does not run into the edge and the tuning remains unaffected.

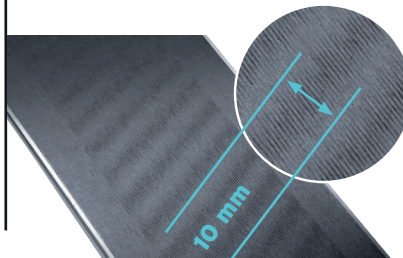
Other manufacturers usually have a structure that runs the entire length of the edge which is not ideal and makes the ski less stable. There are also fewer stone scores so gliding performance is improved.



Structure difference

Structure 3: 5 mm
Structure 4: 10 mm

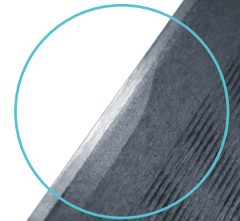
Improved turnability with structure 3, even at lower speeds.



Replaceable base strips

Base Insert with hard base to prevent base burning out at higher speed during Giant Slalom races.

--> WC Rebels e-GS RD FIS



BASE MATERIAL

Okulen 7150C:

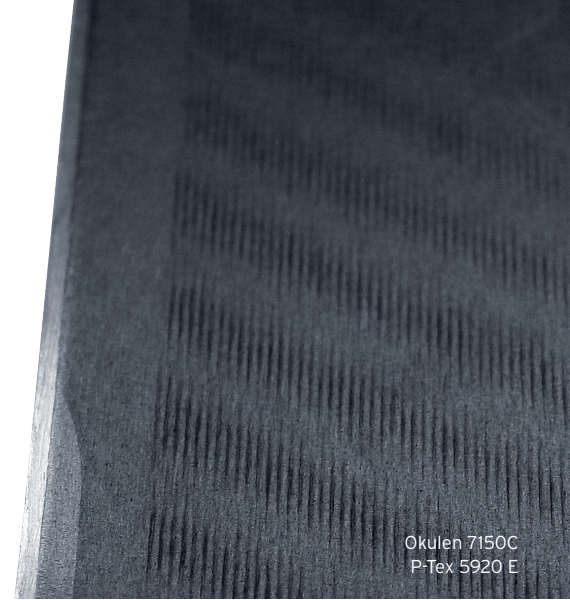
A sintered polyethylene PE base (does not contain fluorine), that is able to absorb more wax to deliver even better/faster gliding properties.

P-Tex 5920 E:

This base covers a wide range of temperatures to ensure high speeds. Described as an all-rounder - takes a bit longer to really get going - but with proper care goes like a rocket on every type of snow.

P-Tex 2000 HC:

A sintered ultra-high molecular polyethylene with high density. The key properties of this running base are its high transparency, as well as excellent gliding characteristics.



Okulen 7150C
P-Tex 5920 E



P-Tex 2000 HC



HEAD[®]
.COM