

# POWER CLAMP INDEX

| <b>PAGE</b>           | <b>DATE</b> | <b>NAAMS CODE</b> | <b>OFFSET</b> | <b>DESCRIPTION</b>   | <b>DISCONTINUED</b> |
|-----------------------|-------------|-------------------|---------------|--|---------------------|
| <a href="#">G-1</a>   | 09/05/12    |                   |               | Power Clamp Index  |                     |
| <a href="#">G-1.1</a> | 11/10/10    |                   |               | Power Clamp Index  |                     |
| <a href="#">G-1.2</a> | 09/05/12    |                   |               | Power Clamp Index  |                     |
| <a href="#">G-1.3</a> | 09/05/12    |                   |               | Power Clamp Index  |                     |
| <a href="#">G-1.4</a> | 06/04/07    |                   |               | Power Clamp Arms Specifications                                |                     |
| <a href="#">G-2</a>   | 11/10/10    | ACA001M–ACA006M   | Straight      | Power Clamp Arms Blanks 60 Series (Full Metric)                |                     |
| <a href="#">G-3</a>   | 11/10/10    | ACA013M–ACA018M   | 20 mm         | Power Clamp Arms Blanks 60 Series (Full Metric)                |                     |
| <a href="#">G-4</a>   | 11/10/10    | ACA025M–ACA030M   | 65 mm         | Power Clamp Arms Blanks 60 Series (Full Metric)                |                     |
| <a href="#">G-5</a>   | 11/10/10    | ACA037M–ACA042M   | 115 mm        | Power Clamp Arms Blanks 60 Series (Full Metric)                |                     |
| <a href="#">G-6</a>   | 11/10/10    | ACA007M–ACA012M   | Straight      | Power Clamp Arms 60 Series (Machined) (Full Metric)            |                     |
| <a href="#">G-7</a>   | 11/10/10    | ACA007M–ACA012M   | Straight      | Power Clamp Arms 60 Series (Machined) (Full Metric)            |                     |
| <a href="#">G-8</a>   | 11/10/10    | ACA019M–ACA024M   | 25 mm         | Power Clamp Arms 60 Series (Machined) (Full Metric)            |                     |
| <a href="#">G-9</a>   | 11/10/10    | ACA019M–ACA024M   | 25 mm         | Power Clamp Arms 60 Series (Machined) (Full Metric)            |                     |
| <a href="#">G-10</a>  | 11/10/10    | ACA031M–ACA036M   | 70 mm         | Power Clamp Arms 60 Series (Machined) (Full Metric)            |                     |
| <a href="#">G-11</a>  | 11/10/10    | ACA031M–ACA036M   | 70 mm         | Power Clamp Arms 60 Series (Machined) (Full Metric)            |                     |
| <a href="#">G-12</a>  | 11/10/10    | ACA043M–ACA048M   | 120 mm        | Power Clamp Arms 60 Series (Machined) (Full Metric)            |                     |
| <a href="#">G-13</a>  | 11/10/10    | ACA043M–ACA048M   | 120 mm        | Power Clamp Arms 60 Series (Machined) (Full Metric)            |                     |
| <a href="#">G-14</a>  | 11/10/10    | ACA100M–ACA108M   | Straight      | Power Clamp Arms Blanks 80/90 Series (Inch and Metric Designs) |                     |
| <a href="#">G-15</a>  | 11/10/10    | ACA120M–ACA128M   | 20 mm         | Power Clamp Arms Blanks 80/90 Series (Inch and Metric Designs) |                     |
| <a href="#">G-16</a>  | 11/10/10    | ACA140M–ACA148M   | 65mm          | Power Clamp Arms Blanks 80/90 Series (Inch and Metric Designs) |                     |
| <a href="#">G-17</a>  | 11/10/10    | ACA160M–ACA168M   | 115 mm        | Power Clamp Arms Blanks 80/90 Series (Inch and Metric Designs) |                     |
| <a href="#">G-18</a>  | 11/10/10    | ACA110M–ACA118M   | Straight      | Power Clamp Arm 80/90 Series (Machined) (Full Metric)          |                     |
| <a href="#">G-19</a>  | 11/10/10    | ACA110M–ACA118M   | Straight      | Power Clamp Arms 80/90 Series (Machined) (Full Metric)         |                     |
| <a href="#">G-20</a>  | 11/10/10    | ACA130M–ACA138M   | 25 mm         | Power Clamp Arms 80/90 Series (Machined) (Full Metric)         |                     |
| <a href="#">G-21</a>  | 11/10/10    | ACA130M–ACA138M   | 25 mm         | Power Clamp Arms 80/90 Series (Machined) (Full Metric)         |                     |
| <a href="#">G-22</a>  | 11/10/10    | ACA150M–ACA158M   | 70 mm         | Power Clamp Arms 80/90 Series (Machined) (Full Metric)         |                     |
| <a href="#">G-23</a>  | 11/10/10    | ACA150M–ACA158M   | 70 mm         | Power Clamp Arms 80/90 Series (Machined) (Full Metric)         |                     |
| <a href="#">G-24</a>  | 11/10/10    | ACA170M–ACA178M   | 120 mm        | Power Clamp Arms 80/90 Series (Machined) (Full Metric)         |                     |
| <a href="#">G-25</a>  | 11/10/10    | ACA170M–ACA178M   | 120 mm        | Power Clamp Arms 80/90 Series (Machined) (Full Metric)         |                     |

# POWER CLAMP INDEX

| PAGE                 | DATE     | NAAMS CODE      | OFFSET   | DESCRIPTION  | DISCONTINUED |
|----------------------|----------|-----------------|----------|--|--------------|
| <a href="#">G-26</a> | 11/10/10 | ACA001-ACA006   | Straight | Power Clamp Arms Blanks 60 Series<br>(Inch and Metric Designs) | X            |
| <a href="#">G-27</a> | 11/10/10 | ACA013-ACA018   | 20 mm    | Power Clamp Arms Blanks 60 Series<br>(Inch and Metric Designs) | X            |
| <a href="#">G-28</a> | 11/10/10 | ACA025-ACA030   | 60 mm    | Power Clamp Arms Blanks 60 Series<br>(Inch and Metric Designs) | X            |
| <a href="#">G-29</a> | 11/10/10 | ACA037-ACA042   | 115 mm   | Power Clamp Arms Blanks 60 Series<br>(Inch and Metric Designs) | X            |
| <a href="#">G-30</a> | 11/10/10 | ACA007-ACA012   | Straight | Power Clamp Arms 60 Series<br>(Machined)                       | X            |
| <a href="#">G-31</a> | 11/10/10 | ACA007-ACA012   | Straight | Power Clamp Arms 60 Series<br>(Machined)                       | X            |
| <a href="#">G-32</a> | 11/10/10 | ACA019-ACA024   | 25 mm    | Power Clamp Arms 60 Series<br>(Machined)                       | X            |
| <a href="#">G-33</a> | 11/10/10 | ACA019-ACA024   | 25 mm    | Power Clamp Arms 60 Series<br>(Machined)                       | X            |
| <a href="#">G-34</a> | 11/10/10 | ACA031-ACA036   | 70 mm    | Power Clamp Arms 60 Series<br>(Machined)                       | X            |
| <a href="#">G-35</a> | 11/10/10 | ACA031-ACA036   | 70 mm    | Power Clamp Arms 60 Series<br>(Machined)                       | X            |
| <a href="#">G-36</a> | 11/10/10 | ACA043-ACA048   | 120 mm   | Power Clamp Arms 60 Series<br>(Machined)                       | X            |
| <a href="#">G-37</a> | 11/10/10 | ACA043-ACA048   | 120 mm   | Power Clamp Arms 60 Series<br>(Machined)                       | X            |
| <a href="#">G-38</a> | 11/10/10 | ACA110-ACA118   | Straight | Power Clamp Arms 80/90 Series<br>(Machined)                    | X            |
| <a href="#">G-39</a> | 11/10/10 | ACA110-ACA118   | Straight | Power Clamp Arms 80/90 Series<br>(Machined)                    | X            |
| <a href="#">G-40</a> | 11/10/10 | ACA130-ACA138   | 25 mm    | Power Clamp Arms 80/90 Series<br>(Machined)                    | X            |
| <a href="#">G-41</a> | 11/10/10 | ACA130-ACA138   | 25 mm    | Power Clamp Arms 80/90 Series<br>(Machined)                    | X            |
| <a href="#">G-42</a> | 11/10/10 | ACA150-ACA158   | 70 mm    | Power Clamp Arms 80/90 Series<br>(Machined)                    | X            |
| <a href="#">G-43</a> | 11/10/10 | ACA150-ACA158   | 70 mm    | Power Clamp Arms 80/90 Series<br>(Machined)                    | X            |
| <a href="#">G-44</a> | 11/10/10 | ACA170-ACA178   | 120 mm   | Power Clamp Arms 80/90 Series<br>(Machined)                    | X            |
| <a href="#">G-45</a> | 11/10/10 | ACA170-ACA178   | 120 mm   | Power Clamp Arms 80/90 Series<br>(Machined)                    | X            |
| <a href="#">G-46</a> | 11/10/10 |                 |          | Enclosed Clamp Hole 50 Series Pattern #1                       |              |
| <a href="#">G-47</a> | 11/10/10 |                 |          | Enclosed Clamp Hole 60 Series Pattern #2                       |              |
| <a href="#">G-48</a> | 11/10/10 |                 |          | Enclosed Clamp Hole 80/90<br>Series Pattern #3                 |              |
| <a href="#">G-49</a> | 11/10/10 | ACA201M-ACA203M | Straight | Power Clamp Arms Blanks<br>50 Series (Full Metric)             |              |
| <a href="#">G-50</a> | 11/10/10 | ACA211M-ACA213M | 20 mm    | Power Clamp Arms Blanks<br>50 Series (Full Metric)             |              |
| <a href="#">G-51</a> | 11/10/10 | ACA221M-ACA223M | 45 mm    | Power Clamp Arms Blanks<br>50 Series (Full Metric)             |              |

# POWER CLAMP INDEX

| PAGE                 | DATE     | NAAMS CODE      | OFFSET   | DESCRIPTION   | DISCONTINUED |
|----------------------|----------|-----------------|----------|---|--------------|
| <a href="#">G-52</a> | 11/10/10 | ACA206M-ACA208M | Straight | Power Clamp Arms 50 Series (Machined) (Full Metric) | X            |
| <a href="#">G-53</a> | 04/30/15 | ACA216M-ACA218M | 25 mm    | Power Clamp Arms 50 Series (Machined) (Full Metric) | X            |
| <a href="#">G-54</a> | 11/10/10 | ACA226M-ACA228M | 50 mm    | Power Clamp Arms 50 Series (Machined) (Full Metric) | X            |
| <a href="#">G-55</a> | 11/10/10 | ACA226M-ACA228M | 50 mm    | Power Clamp Arms 50 Series (Machined) (Full Metric) | X            |
| <a href="#">G-56</a> | 09/05/12 | ACA236M-ACA238M | Straight | Power Clamp Arms 50 Series (Machined) (Full Metric) |              |
| <a href="#">G-57</a> | 09/05/12 | ACA246M-ACA248M | 25 mm    | Power Clamp Arms 50 Series (Machined) (Full Metric) |              |
| <a href="#">G-58</a> | 09/05/12 | ACA256M-ACA258M | 50 mm    | Power Clamp Arms 50 Series (Machined) (Full Metric) |              |
| <a href="#">G-59</a> | 11/10/10 | ACA256M-ACA258M | 50 mm    | Power Clamp Arms 50 Series (Machined) (Full Metric) |              |
| <a href="#">G-60</a> | 11/10/10 |                 |          | 60 Series Power Clamp Envelope                      |              |
| <a href="#">G-61</a> | 11/10/10 |                 |          | 60 Series Power Clamp Optional Mounting             |              |
| <a href="#">G-62</a> | 11/10/10 |                 |          | 50 Series Power Clamp Envelope                      |              |
| <a href="#">G-63</a> | 11/10/10 |                 |          | 50 Series Power Clamp Optional Mounting             |              |
| <a href="#">G-64</a> | 11/10/10 |                 |          | 80/90 Series Power Clamp Envelope                   |              |
| <a href="#">G-65</a> | 11/10/10 |                 |          | 80/90 Series Power Clamp Optional Mounting          |              |
| <a href="#">G-66</a> | 09/05/12 | ACA301M-ACA303M | 25mm     | Wishbone Clamp Arms 50 Series                       | X            |
| <a href="#">G-67</a> | 11/10/10 | ACA301M-ACA303M | 25mm     | Wishbone Clamp Arms 50 Series                       | X            |
| <a href="#">G-68</a> | 09/05/12 | ACA311M-ACA313M | 50mm     | Wishbone Clamp Arms 50 Series                       | X            |
| <a href="#">G-69</a> | 11/10/10 | ACA311M-ACA313M | 50mm     | Wishbone Clamp Arms 50 Series                       | X            |
| <a href="#">G-70</a> | 09/05/12 | ACA320M-ACA325M | 25mm     | Wishbone Clamp Arms 60 Series                       | X            |
| <a href="#">G-71</a> | 11/10/10 | ACA320M-ACA325M | 25mm     | Wishbone Clamp Arms 60 Series                       | X            |
| <a href="#">G-72</a> | 09/05/12 | ACA330M-ACA335M | 70mm     | Wishbone Clamp Arms 60 Series                       | X            |
| <a href="#">G-73</a> | 11/10/10 | ACA330M-ACA335M | 70mm     | Wishbone Clamp Arms 60 Series                       | X            |
| <a href="#">G-74</a> | 09/05/12 | ACA401M-ACA403M | Straight | Power Clamp Arms 50 Series (Machined) (Full Metric) |              |
| <a href="#">G-75</a> | 09/05/12 | ACA411M-ACA413M | 25mm     | Power Clamp Arms 50 Series (Machined) (Full Metric) |              |
| <a href="#">G-76</a> | 09/05/12 | ACA421M-ACA423M | 50mm     | Power Clamp Arms 50 Series (Machined) (Full Metric) |              |
| <a href="#">G-77</a> | 11/10/10 | ACA421M-ACA423M | 50mm     | Power Clamp Arms 50 Series (Machined) (Full Metric) |              |
| <a href="#">G-78</a> | 09/05/12 | ACA431M-ACA433M | 25mm     | Wishbone Clamp Arms 50 Series                       | X            |
| <a href="#">G-79</a> | 11/10/10 | ACA431M-ACA433M | 25mm     | Wishbone Clamp Arms 50 Series                       | X            |
| <a href="#">G-80</a> | 09/05/12 | ACA441M-ACA443M | 50mm     | Wishbone Clamp Arms 50 Series                       | X            |

# POWER CLAMP INDEX

| PAGE                  | DATE     | NAAMS CODE      | OFFSET   | DESCRIPTION  | DISCONTINUED |
|-----------------------|----------|-----------------|----------|--|--------------|
| <a href="#">G-81</a>  | 11/10/10 | ACA441M-ACA443M | 50mm     | Wishbone Clamp Arms 50 Series  | X            |
| <a href="#">G-82</a>  | 09/05/12 | ACA451M-ACA456M | 25mm     | Wishbone Clamp Arms 60 Series  | X            |
| <a href="#">G-83</a>  | 11/10/10 | ACA451M-ACA456M | 25mm     | Wishbone Clamp Arms 60 Series  | X            |
| <a href="#">G-84</a>  | 09/05/12 | ACA461M-ACA466M | 70mm     | Wishbone Clamp Arms 60 Series  | X            |
| <a href="#">G-85</a>  | 11/10/10 | ACA461M-ACA466M | 70mm     | Wishbone Clamp Arms 60 Series  | X            |
| <a href="#">G-86</a>  | 09/05/12 | ACA507M-ACA512M | Straight | Power Clamp Arms 60 Series<br>(Machined - 20 mm Wide)                                |              |
| <a href="#">G-87</a>  | 11/10/10 | ACA507M-ACA512M | Straight | Power Clamp Arms 60 Series<br>(Machined - 20 mm Wide)                                |              |
| <a href="#">G-88</a>  | 09/05/12 | ACA519M-ACA524M | 25mm     | Power Clamp Arms 60 Series<br>(Machined - 20 mm Wide)                                |              |
| <a href="#">G-89</a>  | 11/10/10 | ACA519M-ACA524M | 25mm     | Power Clamp Arms 60 Series<br>(Machined - 20 mm Wide)                                |              |
| <a href="#">G-90</a>  | 09/05/12 | ACA531M-ACA536M | 70mm     | Power Clamp Arms 60 Series<br>(Machined - 20 mm Wide)                                |              |
| <a href="#">G-91</a>  | 11/10/10 | ACA531M-ACA536M | 70mm     | Power Clamp Arms 60 Series<br>(Machined - 20 mm Wide)                                |              |
| <a href="#">G-92</a>  | 09/05/12 | ACA543M-ACA548M | 120mm    | Power Clamp Arms 60 Series<br>(Machined - 20 mm Wide)                                |              |
| <a href="#">G-93</a>  | 11/10/10 | ACA543M-ACA548M | 120mm    | Power Clamp Arms 60 Series<br>(Machined - 20 mm Wide)                                |              |
| <a href="#">G-94</a>  | 09/05/12 | ACA513M-ACA518M | Straight | Power Clamp Arms 60 Series<br>(Machined - 20 mm Wide)                                |              |
| <a href="#">G-95</a>  | 11/10/10 | ACA513M-ACA518M | Straight | Power Clamp Arms 60 Series<br>(Machined - 20 mm Wide)                                |              |
| <a href="#">G-96</a>  | 09/05/12 | ACA525M-ACA530M | 25mm     | Power Clamp Arms 60 Series<br>(Machined - 20 mm Wide)                                |              |
| <a href="#">G-97</a>  | 11/10/10 | ACA525M-ACA530M | 25mm     | Power Clamp Arms 60 Series<br>(Machined - 20 mm Wide)                                |              |
| <a href="#">G-98</a>  | 09/05/12 | ACA537M-ACA542M | 70mm     | Power Clamp Arms 60 Series<br>(Machined - 20 mm Wide)                                |              |
| <a href="#">G-99</a>  | 11/10/10 | ACA537M-ACA542M | 70mm     | Power Clamp Arms 60 Series<br>(Machined - 20 mm Wide)                                |              |
| <a href="#">G-100</a> | 09/05/12 | ACA549M-ACA554M | 120mm    | Power Clamp Arms 60 Series<br>(Machined - 20 mm Wide)                                |              |
| <a href="#">G-101</a> | 11/10/10 | ACA549M-ACA554M | 120mm    | Power Clamp Arms 60 Series<br>(Machined - 20 mm Wide)                                |              |
| <a href="#">G-102</a> | 04/30/15 | ACA201G-ACA203G | Straight | Power Clamp Arms 50 Series<br>Gripper Clamping Components<br>(Machined - 20 mm Wide) |              |
| <a href="#">G-103</a> | 04/30/15 | ACA211G-ACA213G | 25mm     | Power Clamp Arms 50 Series<br>Gripper Clamping Components<br>(Machined - 20 mm Wide) |              |
| <a href="#">G-104</a> | 04/30/15 | ACA221G-ACA223G | 50mm     | Power Clamp Arms 50 Series<br>Gripper Clamping Components<br>(Machined - 20 mm Wide) |              |

# WISHBONE CLAMP ARMS 50 SERIES 25mm OFFSET

GLOBAL STANDARD COMPONENTS

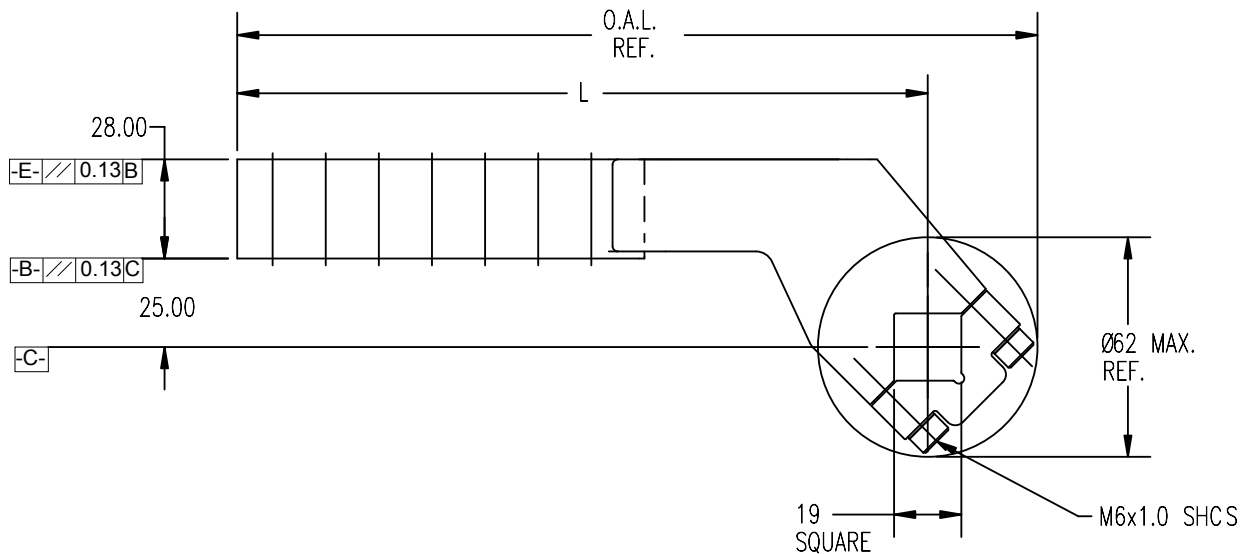
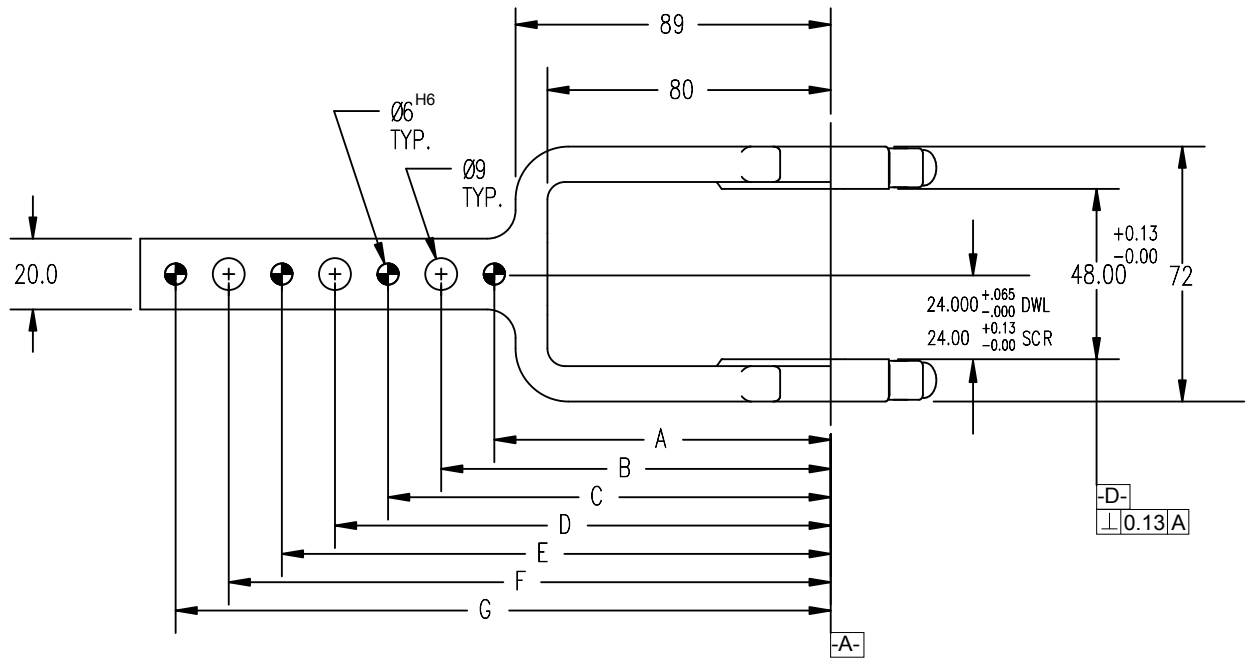


Assembly

09/05/12

A

B



EXCEPT AS NOTED TOLERANCES SHALL BE:

- 1 PLACE MACHINING  $\pm 0.3$
- 1 PLACE FABRICATION  $\pm 1.5$
- 2 PLACE  $\pm 0.03$  GENERAL
- $\pm 0.03$  BETWEEN DOWELS
- $\pm 0.13$  TO SCREW HOLES

NOTES: ALL DIMENSIONS METRIC UNLESS OTHERWISE NOTED.  
MATERIAL: SAE 4140 or SAE 1045

STAMP OR ETCH THE NAAMS CODE NUMBER AND THE CLAMP ARM MANUFACTURER'S NUMBER, IF DIFFERENT, ON THE SIDE OF THE ARM.

PAINT AS PRESCRIBED ON PAGE G-1.2

THIS STANDARD BECOMES EFFECTIVE SEPTEMBER 1ST 2007

TABULATED INFORMATION ON FOLLOWING PAGE

# WISHBONE CLAMP ARMS 50 SERIES 25mm OFFSET

GLOBAL STANDARD COMPONENTS



Assembly

11/10/10

A

EXCEPT AS NOTED TOLERANCES SHALL BE:

- 1 PLACE MACHINING  $\pm 0.3$
- 1 PLACE FABRICATION  $\pm 1.5$
- 2 PLACE  $\pm 0.03$  GENERAL
  - $\pm 0.03$  BETWEEN DOWELS
  - $\pm 0.13$  TO SCREW HOLES

NOTES: ALL DIMENSIONS METRIC UNLESS OTHERWISE NOTED.

MATERIAL: SAE 4140 or SAE 1045

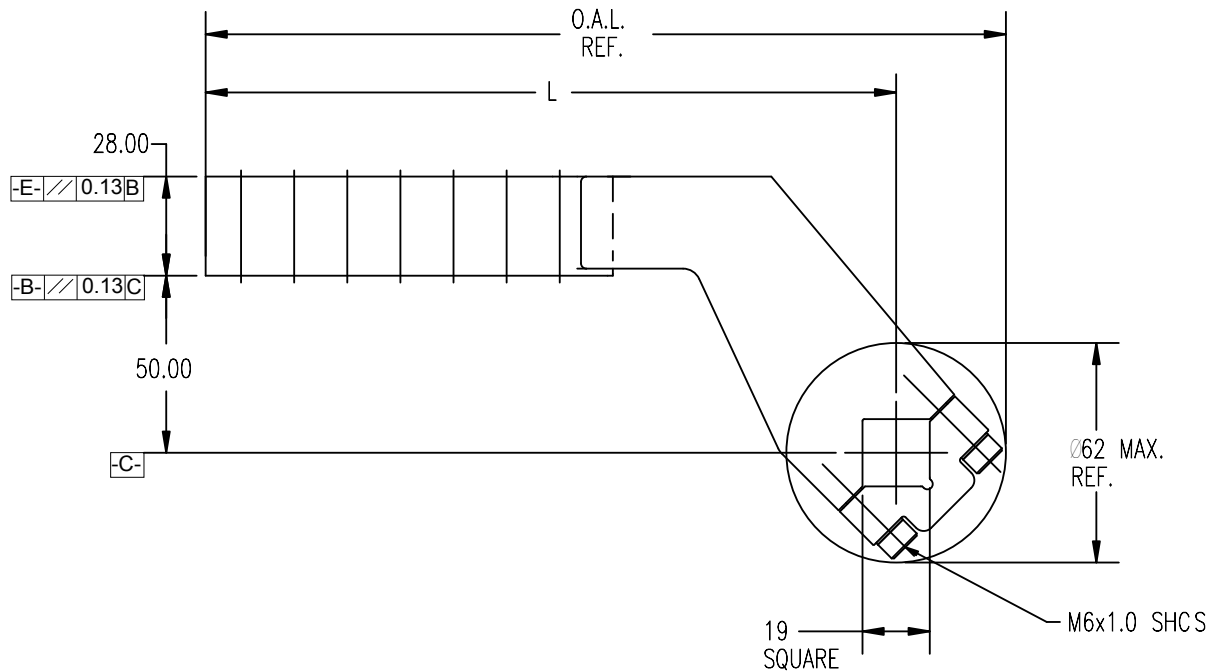
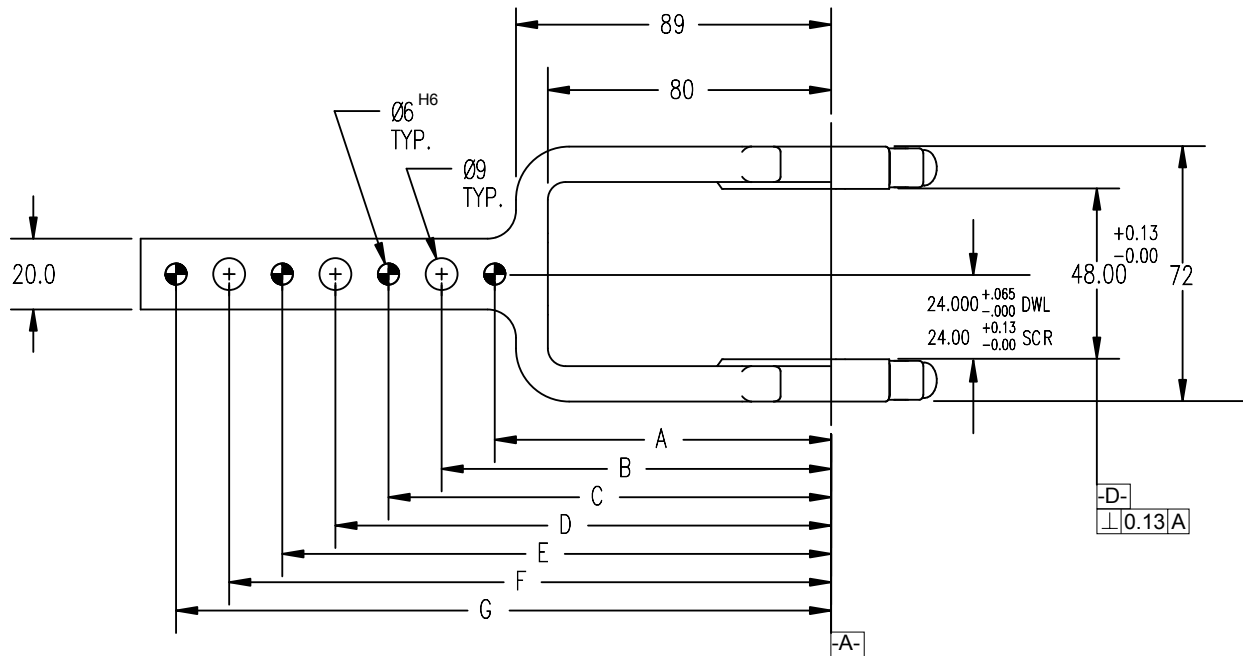
| ARM NO. | A<br>DWL | B   | C<br>DWL | D   | E<br>DWL | F   | G<br>DWL | L   | O.A.L. | WEIGHT<br>Kg [Lbs] |
|---------|----------|-----|----------|-----|----------|-----|----------|-----|--------|--------------------|
| ACA301M | 95       | 110 | 125      | -   | -        | -   | -        | 135 | 166    | 0.9 [2.0]          |
| ACA302M | 95       | 110 | 125      | 140 | 155      | -   | -        | 165 | 196    | 1.0 [2.2]          |
| ACA303M | 95       | 110 | 125      | 140 | 155      | 170 | 185      | 195 | 226    | 1.2 [2.6]          |

SEE DRAWING ON PREVIOUS PAGE

THIS STANDARD BECOMES EFFECTIVE SEPTEMBER 1ST 2007

# WISHBONE CLAMP ARMS 50 SERIES 50mm OFFSET

A  
B



EXCEPT AS NOTED TOLERANCES SHALL BE:

- 1 PLACE MACHINING  $\pm 0.3$
- 1 PLACE FABRICATION  $\pm 1.5$
- 2 PLACE  $\pm 0.03$  GENERAL
- $\pm 0.03$  BETWEEN DOWELS
- $\pm 0.13$  TO SCREW HOLES

NOTES: ALL DIMENSIONS METRIC UNLESS OTHERWISE NOTED.  
 MATERIAL: SAE 4140 or SAE 1045

STAMP OR ETCH THE NAAMS CODE NUMBER AND THE CLAMP ARM MANUFACTURER'S NUMBER, IF DIFFERENT, ON THE SIDE OF THE ARM.

PAINT AS PRESCRIBED ON PAGE G-1.2

THIS STANDARD BECOMES EFFECTIVE SEPTEMBER 1ST 2007

TABULATED INFORMATION ON FOLLOWING PAGE

# WISHBONE CLAMP ARMS 50 SERIES 50mm OFFSET

EXCEPT AS NOTED TOLERANCES SHALL BE:

- 1 PLACE MACHINING  $\pm 0.3$
- 1 PLACE FABRICATION  $\pm 1.5$
- 2 PLACE  $\pm 0.03$  GENERAL
  - $\pm 0.03$  BETWEEN DOWELS
  - $\pm 0.13$  TO SCREW HOLES

NOTES: ALL DIMENSIONS METRIC UNLESS OTHERWISE NOTED.

MATERIAL: SAE 4140 or SAE 1045

| ARM NO. | A<br>DWL | B   | C<br>DWL | D   | E<br>DWL | F   | G<br>DWL | L   | O.A.L. | WEIGHT<br>Kg [Lbs] |
|---------|----------|-----|----------|-----|----------|-----|----------|-----|--------|--------------------|
| ACA311M | 95       | 110 | 125      | -   | -        | -   | -        | 135 | 166    | 1.1 [2.4]          |
| ACA312M | 95       | 110 | 125      | 140 | 155      | -   | -        | 165 | 196    | 1.2 [2.7]          |
| ACA313M | 95       | 110 | 125      | 140 | 155      | 170 | 185      | 195 | 226    | 1.4 [3.0]          |

SEE DRAWING ON PREVIOUS PAGE

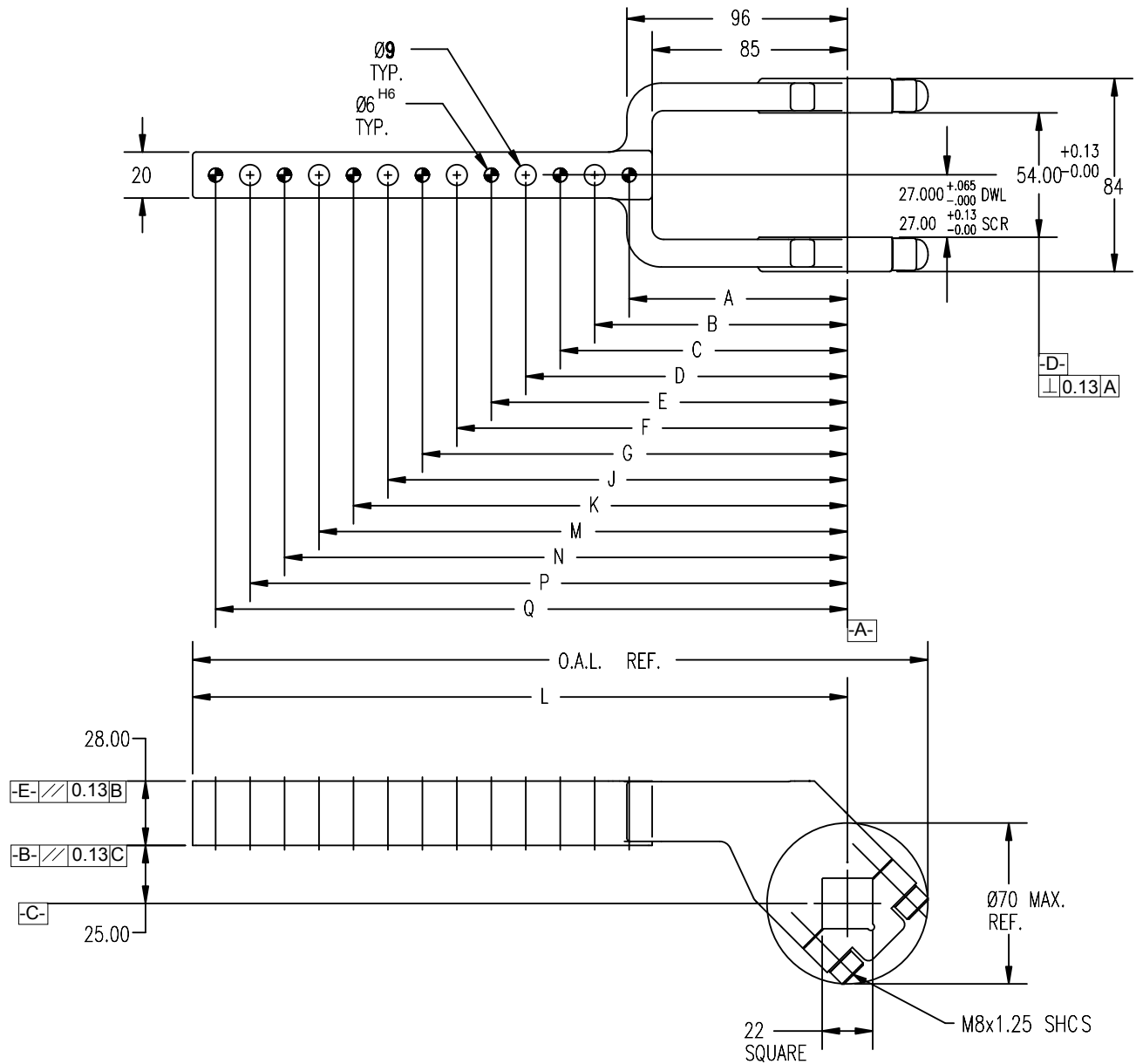
THIS STANDARD BECOMES EFFECTIVE SEPTEMBER 1ST 2007



# WISHBONE CLAMP ARMS 60 SERIES 25mm OFFSET

A

B



EXCEPT AS NOTED TOLERANCES SHALL BE:

- 1 PLACE MACHINING  $\pm 0.3$
- 1 PLACE FABRICATION  $\pm 1.5$
- 2 PLACE  $\pm 0.03$  GENERAL
- $\pm 0.03$  BETWEEN DOWELS
- $\pm 0.13$  TO SCREW HOLES

NOTES: ALL DIMENSIONS METRIC UNLESS OTHERWISE NOTED.  
MATERIAL: SAE 4140 or SAE 1045

STAMP OR ETCH THE NAAMS CODE NUMBER AND THE CLAMP ARM MANUFACTURER'S NUMBER, IF DIFFERENT, ON THE SIDE OF THE ARM.

PAINT AS PRESCRIBED ON PAGE G-1.2

THIS STANDARD BECOMES EFFECTIVE SEPTEMBER 1ST 2007

TABULATED INFORMATION ON FOLLOWING PAGE

# WISHBONE CLAMP ARMS 60 SERIES 25mm OFFSET

GLOBAL STANDARD COMPONENTS



Assembly

11/10/10

A

EXCEPT AS NOTED TOLERANCES SHALL BE:

- 1 PLACE MACHINING  $\pm 0.3$
- 1 PLACE FABRICATION  $\pm 1.5$
- 2 PLACE  $\pm 0.03$  GENERAL
- $\pm 0.03$  BETWEEN DOWELS
- $\pm 0.13$  TO SCREW HOLES

NOTES: ALL DIMENSIONS METRIC UNLESS OTHERWISE NOTED.

MATERIAL: SAE 4140 or SAE 1045

| ARM NO. | A<br>DWL | B   | C<br>DWL | D   | E<br>DWL | F   | G<br>DWL | J   | K<br>DWL | M   | N<br>DWL | P   | Q<br>DWL | L   | O.A.L. | WEIGHT<br>Kg [Lbs] |
|---------|----------|-----|----------|-----|----------|-----|----------|-----|----------|-----|----------|-----|----------|-----|--------|--------------------|
| ACA320M | 95       | 110 | 125      | -   | -        | -   | -        | -   | -        | -   | -        | -   | -        | 135 | 170    | 1.3 [2.8]          |
| ACA321M | 95       | 110 | 125      | 140 | 155      | -   | -        | -   | -        | -   | -        | -   | -        | 165 | 200    | 1.4 [3.1]          |
| ACA322M | 95       | 110 | 125      | 140 | 155      | 170 | 185      | -   | -        | -   | -        | -   | -        | 195 | 230    | 1.5 [3.3]          |
| ACA323M | 95       | 110 | 125      | 140 | 155      | 170 | 185      | 200 | 215      | -   | -        | -   | -        | 225 | 260    | 1.6 [3.6]          |
| ACA324M | 95       | 110 | 125      | 140 | 155      | 170 | 185      | 200 | 215      | 230 | 245      | -   | -        | 255 | 290    | 1.7 [3.8]          |
| ACA325M | 95       | 110 | 125      | 140 | 155      | 170 | 185      | 200 | 215      | 230 | 245      | 260 | 275      | 285 | 320    | 1.8 [4.0]          |

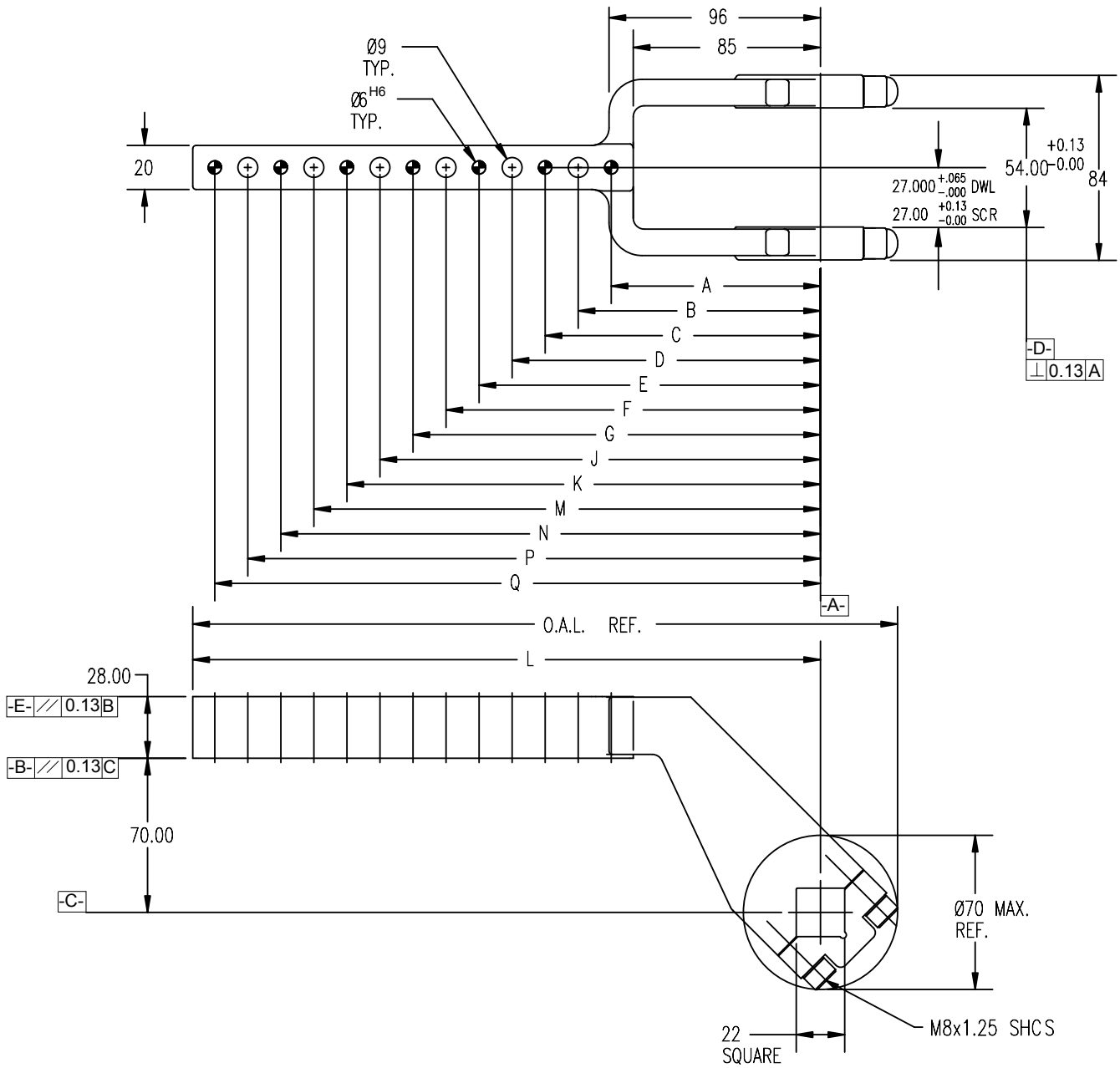
SEE DRAWING ON PREVIOUS PAGE

THIS STANDARD BECOMES EFFECTIVE SEPTEMBER 1ST 2007

# WISHBONE CLAMP ARMS 60 SERIES 70mm OFFSET

A

B



EXCEPT AS NOTED TOLERANCES SHALL BE:

- 1 PLACE MACHINING  $\pm 0.3$
- 1 PLACE FABRICATION  $\pm 1.5$
- 2 PLACE  $\pm 0.03$  GENERAL
- $\pm 0.03$  BETWEEN DOWELS
- $\pm 0.13$  TO SCREW HOLES

NOTES: ALL DIMENSIONS METRIC UNLESS OTHERWISE NOTED.  
 MATERIAL: SAE 4140 or SAE 1045

STAMP OR ETCH THE NAAMS CODE NUMBER AND  
 THE CLAMP ARM MANUFACTURER'S NUMBER, IF  
 DIFFERENT, ON THE SIDE OF THE ARM.

PAINT AS PRESCRIBED ON PAGE G-1.2

THIS STANDARD BECOMES EFFECTIVE SEPTEMBER 1ST 2007

TABULATED INFORMATION ON FOLLOWING PAGE

# WISHBONE CLAMP ARMS 60 SERIES 70mm OFFSET

EXCEPT AS NOTED TOLERANCES SHALL BE:

- 1 PLACE MACHINING  $\pm 0.3$
- 1 PLACE FABRICATION  $\pm 1.5$
- 2 PLACE  $\pm 0.03$  GENERAL
  - $\pm 0.03$  BETWEEN DOWELS
  - $\pm 0.13$  TO SCREW HOLES

NOTES: ALL DIMENSIONS METRIC UNLESS OTHERWISE NOTED.

MATERIAL: SAE 4140 or SAE 1045

| ARM NO. | A<br>DWL | B   | C<br>DWL | D   | E<br>DWL | F   | G<br>DWL | J   | K<br>DWL | M   | N<br>DWL | P   | Q<br>DWL | L   | O.A.L. | WEIGHT<br>Kg [Lbs] |
|---------|----------|-----|----------|-----|----------|-----|----------|-----|----------|-----|----------|-----|----------|-----|--------|--------------------|
| ACA330M | 95       | 110 | 125      | -   | -        | -   | -        | -   | -        | -   | -        | -   | -        | 135 | 170    | 1.6 [3.4]          |
| ACA331M | 95       | 110 | 125      | 140 | 155      | -   | -        | -   | -        | -   | -        | -   | -        | 165 | 200    | 1.7 [3.7]          |
| ACA332M | 95       | 110 | 125      | 140 | 155      | 170 | 185      | -   | -        | -   | -        | -   | -        | 195 | 230    | 1.8 [3.9]          |
| ACA333M | 95       | 110 | 125      | 140 | 155      | 170 | 185      | 200 | 215      | -   | -        | -   | -        | 225 | 260    | 1.9 [4.2]          |
| ACA334M | 95       | 110 | 125      | 140 | 155      | 170 | 185      | 200 | 215      | 230 | 245      | -   | -        | 255 | 290    | 2.0 [4.4]          |
| ACA335M | 95       | 110 | 125      | 140 | 155      | 170 | 185      | 200 | 215      | 230 | 245      | 260 | 275      | 285 | 320    | 2.1 [4.7]          |

SEE DRAWING ON PREVIOUS PAGE

THIS STANDARD BECOMES EFFECTIVE SEPTEMBER 1ST 2007

# POWER CLAMP ARMS 50 SERIES

(STRAIGHT - MACHINED) (FULL METRIC)

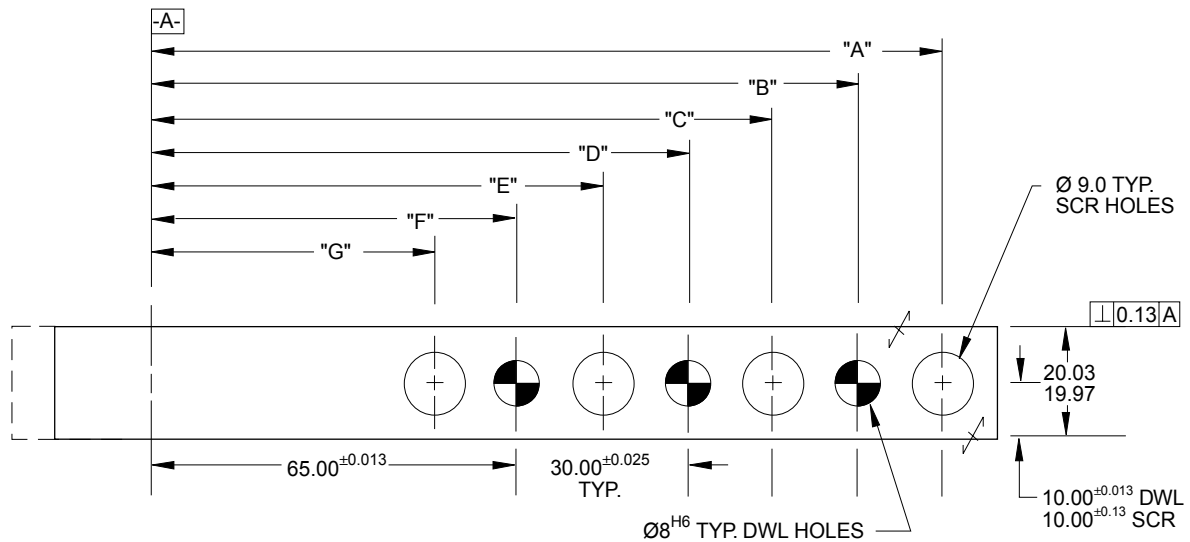
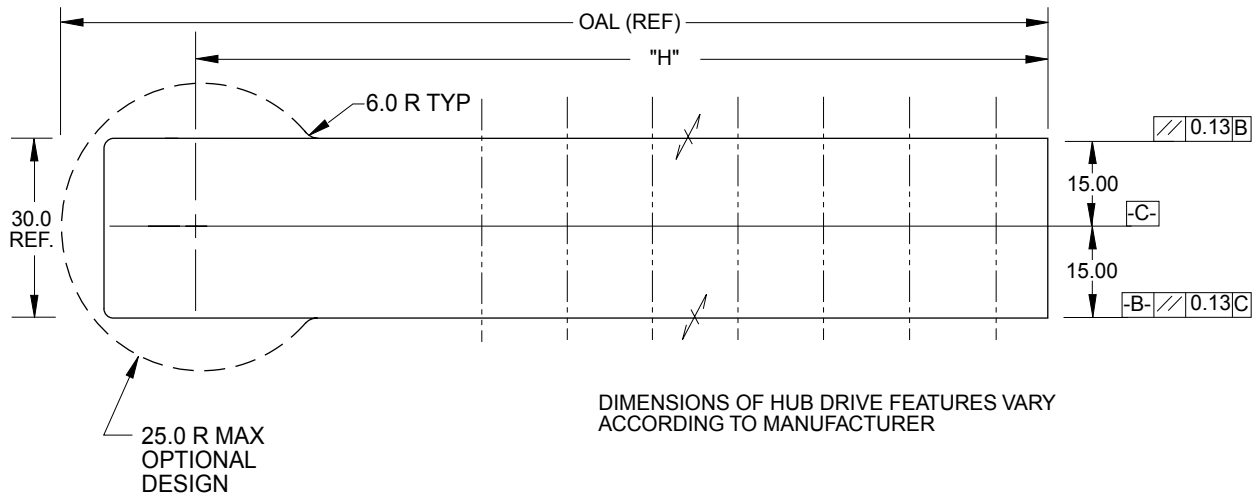
GLOBAL STANDARD COMPONENTS



Assembly

09/05/12

A



EXCEPT AS NOTED TOLERANCES SHALL BE:

- 1 PLACE MACHINING  $\pm 0.3$
- 1 PLACE FABRICATION  $\pm 1.5$
- 2 PLACE  $\pm 0.03$  GENERAL
- $\pm 0.03$  BETWEEN DOWELS
- $\pm 0.13$  TO SCREW HOLES

NOTES: ALL DIMENSIONS METRIC UNLESS OTHERWISE NOTED.

MATERIAL: SAE 4140 or SAE 1045

STAMP OR ETCH THE NAAMS CODE NUMBER AND THE CLAMP ARM MANUFACTURER'S NUMBER, IF DIFFERENT, ON THE SIDE OF THE ARM.

PAINT AS PRESCRIBED ON PAGE G-1.2

| NAAMS CODE | DIM. "A" | DIM. "B" | DIM. "C" | DIM. "D" | DIM. "E" | DIM. "F" | DIM. "G" | DIM. "H"<br>+1.5/-0.0 | MAX OAL<br>(REF) | WEIGHT<br>kg |
|------------|----------|----------|----------|----------|----------|----------|----------|-----------------------|------------------|--------------|
| ACA401M    | 80.00    | 65.00    | 50.00    |          |          |          |          | 90.0                  | 115.0            | 0.4          |
| ACA402M    | 110.00   | 95.00    | 80.00    | 65.00    | 50.00    |          |          | 120.0                 | 145.0            | 0.5          |
| ACA403M    | 140.00   | 125.00   | 110.00   | 95.00    | 80.00    | 65.00    | 50.00    | 150.0                 | 175.0            | 0.6          |



B

# WISHBONE CLAMP ARMS 50 SERIES 25mm OFFSET

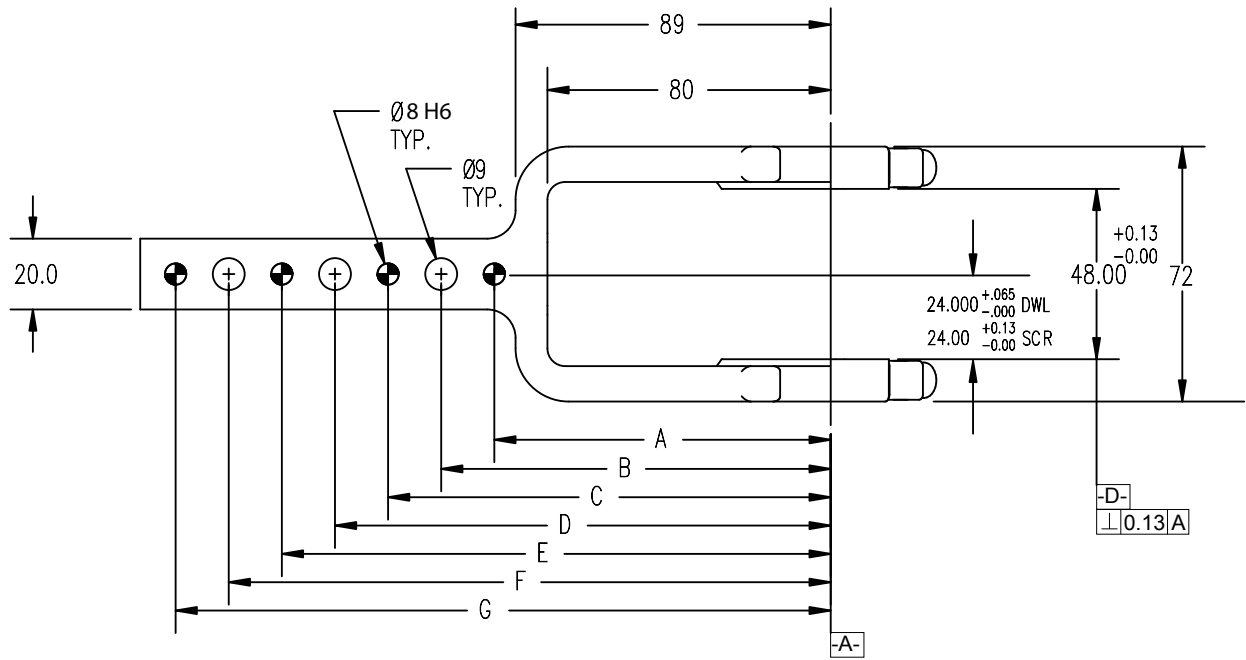
GLOBAL STANDARD COMPONENTS



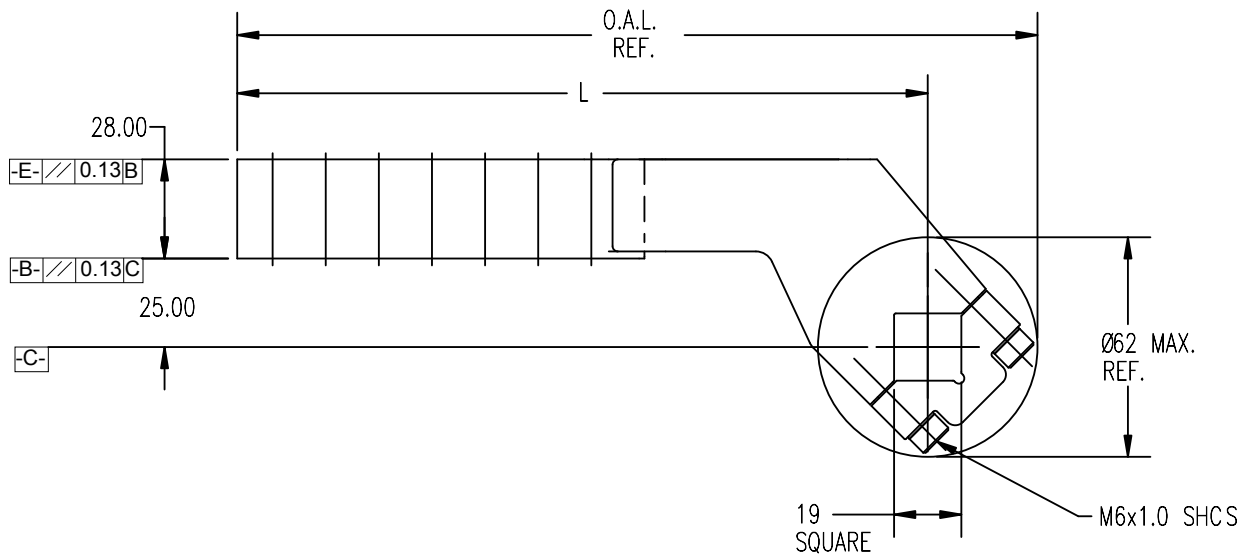
Assembly

09/05/12

A



B



EXCEPT AS NOTED TOLERANCES SHALL BE:

- 1 PLACE MACHINING  $\pm 0.3$
- 1 PLACE FABRICATION  $\pm 1.5$
- 2 PLACE  $\pm 0.03$  GENERAL
- $\pm 0.03$  BETWEEN DOWELS
- $\pm 0.13$  TO SCREW HOLES

NOTES: ALL DIMENSIONS METRIC UNLESS OTHERWISE NOTED.  
MATERIAL: SAE 4140 or SAE 1045

STAMP OR ETCH THE NAAMS CODE NUMBER AND THE CLAMP ARM MANUFACTURER'S NUMBER, IF DIFFERENT, ON THE SIDE OF THE ARM.

PAINT AS PRESCRIBED ON PAGE G-1.2

THIS STANDARD BECOMES EFFECTIVE SEPTEMBER 1ST 2007

TABULATED INFORMATION ON FOLLOWING PAGE

# WISHBONE CLAMP ARMS 50 SERIES 25mm OFFSET

GLOBAL STANDARD COMPONENTS



Assembly

11/10/10

A

EXCEPT AS NOTED TOLERANCES SHALL BE:

- 1 PLACE MACHINING  $\pm 0.3$
- 1 PLACE FABRICATION  $\pm 1.5$
- 2 PLACE  $\pm 0.03$  GENERAL
  - $\pm 0.03$  BETWEEN DOWELS
  - $\pm 0.13$  TO SCREW HOLES

NOTES: ALL DIMENSIONS METRIC UNLESS OTHERWISE NOTED.

MATERIAL: SAE 4140 or SAE 1045

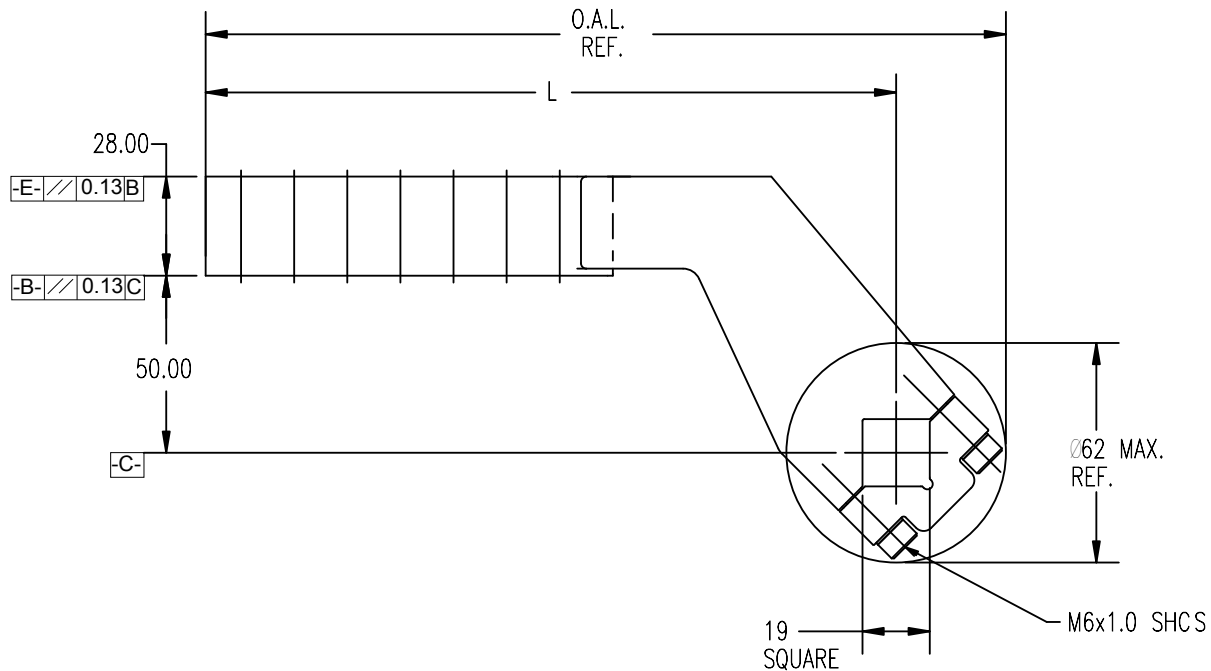
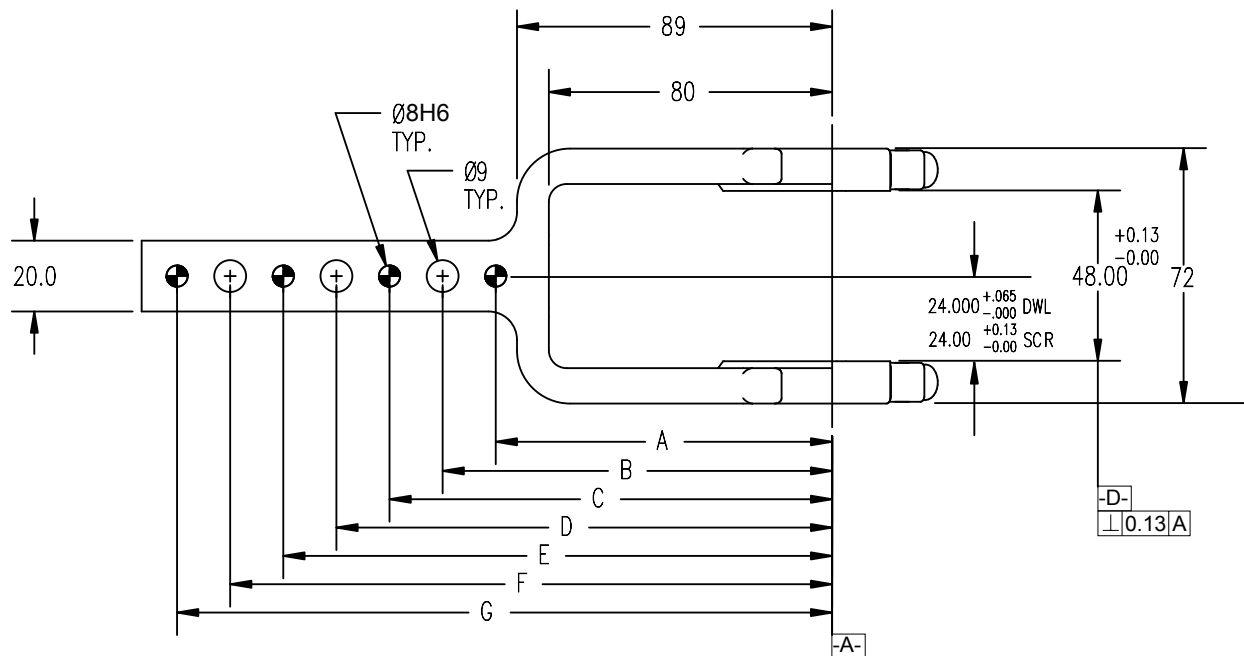
| ARM NO. | A<br>DWL | B   | C<br>DWL | D   | E<br>DWL | F   | G<br>DWL | L   | O.A.L. | WEIGHT<br>Kg [Lbs] |
|---------|----------|-----|----------|-----|----------|-----|----------|-----|--------|--------------------|
| ACA431M | 95       | 110 | 125      | -   | -        | -   | -        | 135 | 166    | 0.9 [2.0]          |
| ACA432M | 95       | 110 | 125      | 140 | 155      | -   | -        | 165 | 196    | 1.0 [2.2]          |
| ACA433M | 95       | 110 | 125      | 140 | 155      | 170 | 185      | 195 | 226    | 1.2 [2.6]          |

SEE DRAWING ON PREVIOUS PAGE

THIS STANDARD BECOMES EFFECTIVE SEPTEMBER 1ST 2007

# WISHBONE CLAMP ARMS 50 SERIES 50mm OFFSET

A  
B



EXCEPT AS NOTED TOLERANCES SHALL BE:

- 1 PLACE MACHINING ±0.3
- 1 PLACE FABRICATION ±1.5
- 2 PLACE ±0.03 GENERAL
- ±0.03 BETWEEN DOWELS
- ±0.13 TO SCREW HOLES

NOTES: ALL DIMENSIONS METRIC UNLESS OTHERWISE NOTED.  
 MATERIAL: SAE 4140 or SAE 1045

STAMP OR ETCH THE NAAMS CODE NUMBER AND THE CLAMP ARM MANUFACTURER'S NUMBER, IF DIFFERENT, ON THE SIDE OF THE ARM.

PAINT AS PRESCRIBED ON PAGE G-1.2

THIS STANDARD BECOMES EFFECTIVE SEPTEMBER 1ST 2007

TABULATED INFORMATION ON FOLLOWING PAGE



# WISHBONE CLAMP ARMS 50 SERIES 50mm OFFSET

EXCEPT AS NOTED TOLERANCES SHALL BE:

- 1 PLACE MACHINING  $\pm 0.3$
- 1 PLACE FABRICATION  $\pm 1.5$
- 2 PLACE  $\pm 0.03$  GENERAL
  - $\pm 0.03$  BETWEEN DOWELS
  - $\pm 0.13$  TO SCREW HOLES

NOTES: ALL DIMENSIONS METRIC UNLESS OTHERWISE NOTED.

MATERIAL: SAE 4140 or SAE 1045

| ARM NO. | A<br>DWL | B   | C<br>DWL | D   | E<br>DWL | F   | G<br>DWL | L   | O.A.L. | WEIGHT<br>Kg [Lbs] |
|---------|----------|-----|----------|-----|----------|-----|----------|-----|--------|--------------------|
| ACA441M | 95       | 110 | 125      | -   | -        | -   | -        | 135 | 166    | 1.1 [2.4]          |
| ACA442M | 95       | 110 | 125      | 140 | 155      | -   | -        | 165 | 196    | 1.2 [2.7]          |
| ACA443M | 95       | 110 | 125      | 140 | 155      | 170 | 185      | 195 | 226    | 1.4 [3.0]          |

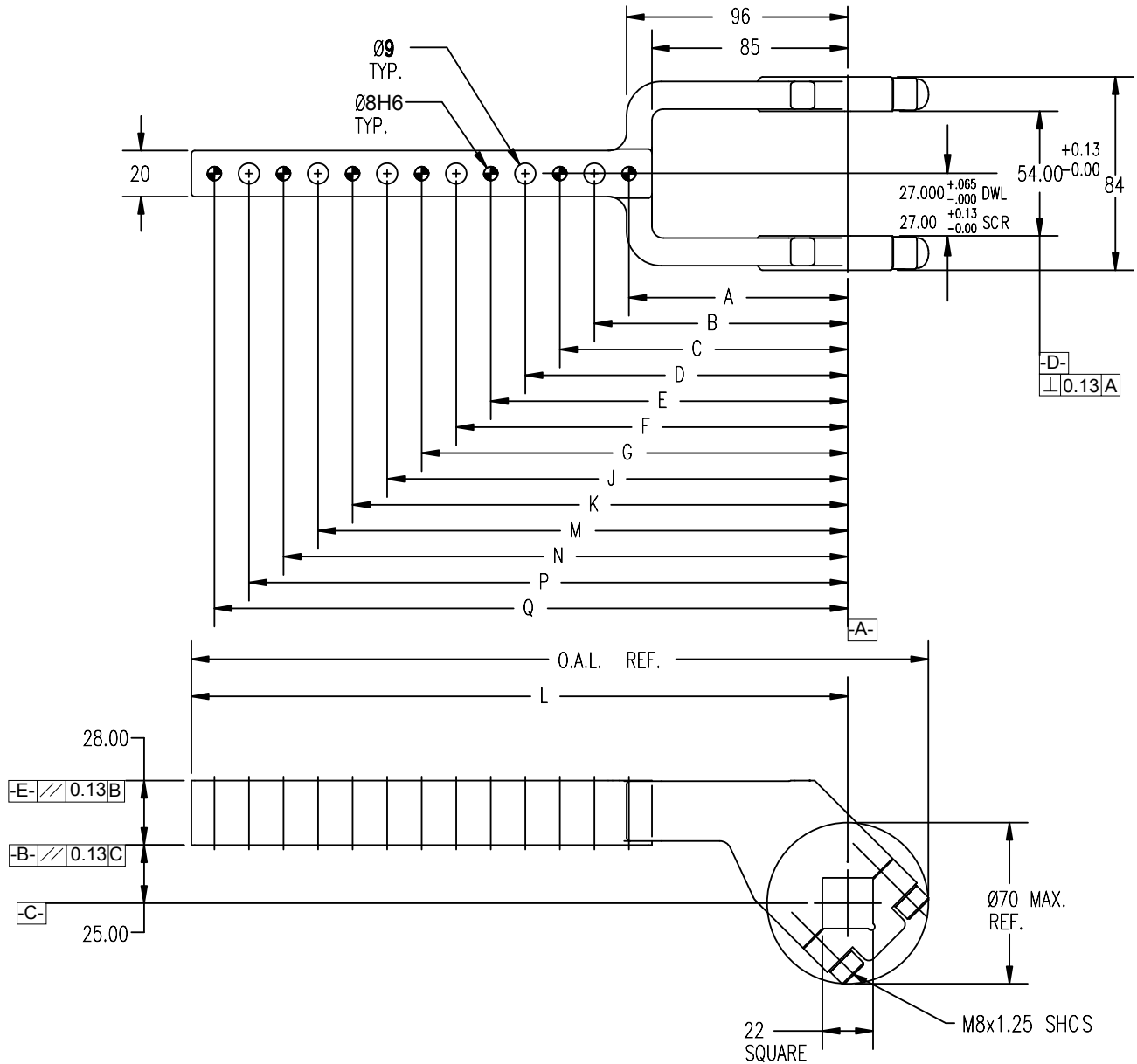
SEE DRAWING ON PREVIOUS PAGE

THIS STANDARD BECOMES EFFECTIVE SEPTEMBER 1ST 2007

# WISHBONE CLAMP ARMS 60 SERIES 25mm OFFSET

A

B



EXCEPT AS NOTED TOLERANCES SHALL BE:

- 1 PLACE MACHINING  $\pm 0.3$
- 1 PLACE FABRICATION  $\pm 1.5$
- 2 PLACE  $\pm 0.03$  GENERAL
- $\pm 0.03$  BETWEEN DOWELS
- $\pm 0.13$  TO SCREW HOLES

NOTES: ALL DIMENSIONS METRIC UNLESS OTHERWISE NOTED.  
 MATERIAL: SAE 4140 or SAE 1045

STAMP OR ETCH THE NAAMS CODE NUMBER AND  
 THE CLAMP ARM MANUFACTURER'S NUMBER, IF  
 DIFFERENT, ON THE SIDE OF THE ARM.

PAINT AS PRESCRIBED ON PAGE G-1.2

THIS STANDARD BECOMES EFFECTIVE SEPTEMBER 1ST 2007

TABULATED INFORMATION ON FOLLOWING PAGE

# WISHBONE CLAMP ARMS 60 SERIES 25mm OFFSET

A

EXCEPT AS NOTED TOLERANCES SHALL BE:

- 1 PLACE MACHINING  $\pm 0.3$
- 1 PLACE FABRICATION  $\pm 1.5$
- 2 PLACE  $\pm 0.03$  GENERAL
  - $\pm 0.03$  BETWEEN DOWELS
  - $\pm 0.13$  TO SCREW HOLES

NOTES: ALL DIMENSIONS METRIC UNLESS OTHERWISE NOTED.

MATERIAL: SAE 4140 or SAE 1045

| ARM NO. | A<br>DWL | B   | C<br>DWL | D   | E<br>DWL | F   | G<br>DWL | J   | K<br>DWL | M   | N<br>DWL | P   | Q<br>DWL | L   | O.A.L. | WEIGHT<br>Kg [Lbs] |
|---------|----------|-----|----------|-----|----------|-----|----------|-----|----------|-----|----------|-----|----------|-----|--------|--------------------|
| ACA451M | 95       | 110 | 125      | -   | -        | -   | -        | -   | -        | -   | -        | -   | -        | 135 | 170    | 1.3 [2.8]          |
| ACA452M | 95       | 110 | 125      | 140 | 155      | -   | -        | -   | -        | -   | -        | -   | -        | 165 | 200    | 1.4 [3.1]          |
| ACA453M | 95       | 110 | 125      | 140 | 155      | 170 | 185      | -   | -        | -   | -        | -   | -        | 195 | 230    | 1.5 [3.3]          |
| ACA454M | 95       | 110 | 125      | 140 | 155      | 170 | 185      | 200 | 215      | -   | -        | -   | -        | 225 | 260    | 1.6 [3.6]          |
| ACA455M | 95       | 110 | 125      | 140 | 155      | 170 | 185      | 200 | 215      | 230 | 245      | -   | -        | 255 | 290    | 1.7 [3.8]          |
| ACA456M | 95       | 110 | 125      | 140 | 155      | 170 | 185      | 200 | 215      | 230 | 245      | 260 | 275      | 285 | 320    | 1.8 [4.0]          |

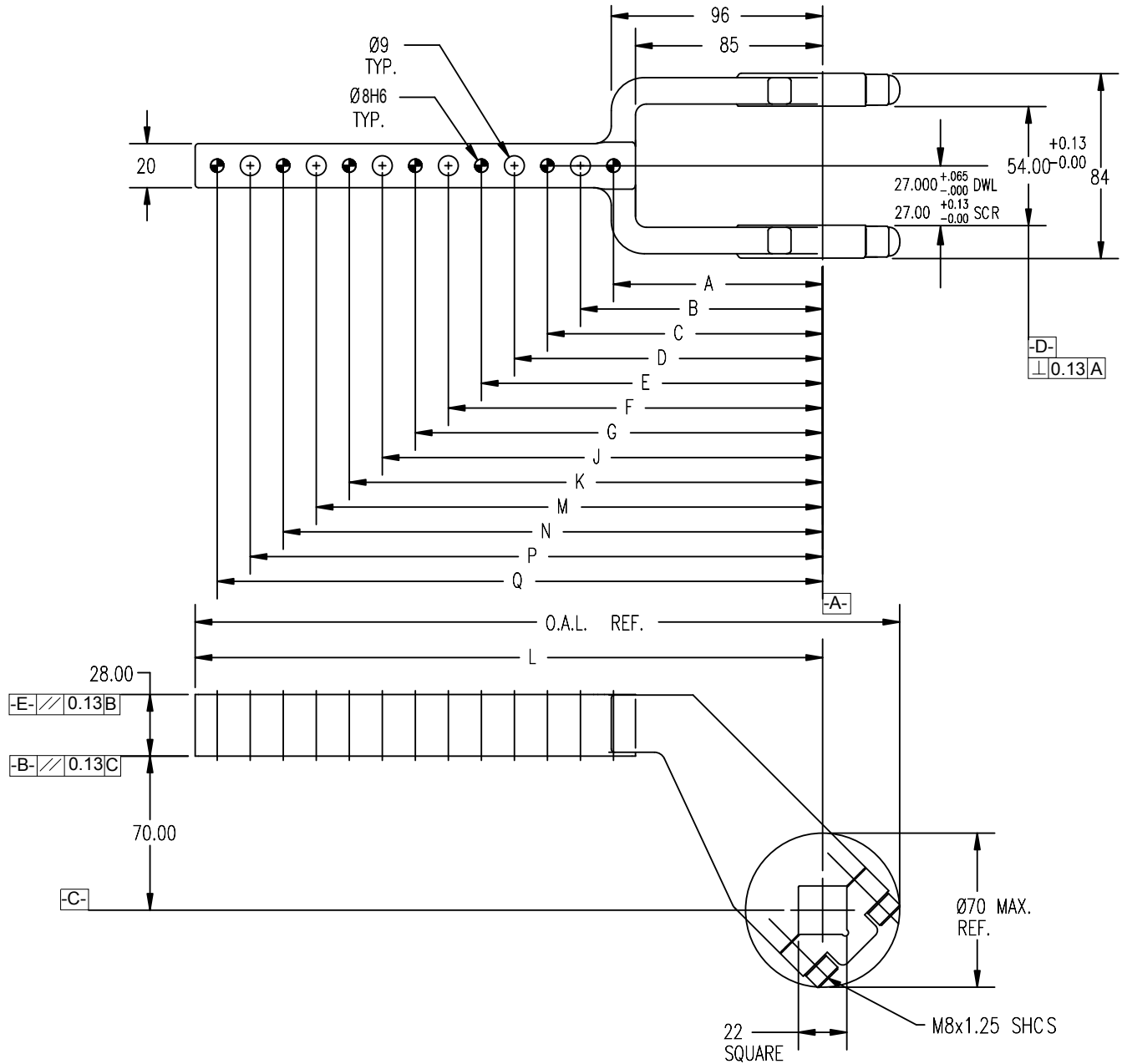
SEE DRAWING ON PREVIOUS PAGE

THIS STANDARD BECOMES EFFECTIVE SEPTEMBER 1ST 2007

# WISHBONE CLAMP ARMS 60 SERIES 70mm OFFSET

A

B



EXCEPT AS NOTED TOLERANCES SHALL BE:

- 1 PLACE MACHINING  $\pm 0.3$
- 1 PLACE FABRICATION  $\pm 1.5$
- 2 PLACE  $\pm 0.03$  GENERAL
- $\pm 0.03$  BETWEEN DOWELS
- $\pm 0.13$  TO SCREW HOLES

NOTES: ALL DIMENSIONS METRIC UNLESS OTHERWISE NOTED.  
 MATERIAL: SAE 4140 or SAE 1045

STAMP OR ETCH THE NAAMS CODE NUMBER AND THE CLAMP ARM MANUFACTURER'S NUMBER, IF DIFFERENT, ON THE SIDE OF THE ARM.

PAINT AS PRESCRIBED ON PAGE G-1.2

THIS STANDARD BECOMES EFFECTIVE SEPTEMBER 1ST 2007

TABULATED INFORMATION ON FOLLOWING PAGE

# WISHBONE CLAMP ARMS 60 SERIES 70mm OFFSET

GLOBAL STANDARD COMPONENTS



Assembly

11/10/10

A

EXCEPT AS NOTED TOLERANCES SHALL BE:

- 1 PLACE MACHINING  $\pm 0.3$
- 1 PLACE FABRICATION  $\pm 1.5$
- 2 PLACE  $\pm 0.03$  GENERAL
  - $\pm 0.03$  BETWEEN DOWELS
  - $\pm 0.13$  TO SCREW HOLES

NOTES: ALL DIMENSIONS METRIC UNLESS OTHERWISE NOTED.

MATERIAL: SAE 4140 or SAE 1045

| ARM NO. | A<br>DWL | B   | C<br>DWL | D   | E<br>DWL | F   | G<br>DWL | J   | K<br>DWL | M   | N<br>DWL | P   | Q<br>DWL | L   | O.A.L. | WEIGHT<br>Kg [Lbs] |
|---------|----------|-----|----------|-----|----------|-----|----------|-----|----------|-----|----------|-----|----------|-----|--------|--------------------|
| ACA461M | 95       | 110 | 125      | -   | -        | -   | -        | -   | -        | -   | -        | -   | -        | 135 | 170    | 1.6 [3.4]          |
| ACA462M | 95       | 110 | 125      | 140 | 155      | -   | -        | -   | -        | -   | -        | -   | -        | 165 | 200    | 1.7 [3.7]          |
| ACA463M | 95       | 110 | 125      | 140 | 155      | 170 | 185      | -   | -        | -   | -        | -   | -        | 195 | 230    | 1.8 [3.9]          |
| ACA464M | 95       | 110 | 125      | 140 | 155      | 170 | 185      | 200 | 215      | -   | -        | -   | -        | 225 | 260    | 1.9 [4.2]          |
| ACA465M | 95       | 110 | 125      | 140 | 155      | 170 | 185      | 200 | 215      | 230 | 245      | -   | -        | 255 | 290    | 2.0 [4.4]          |
| ACA466M | 95       | 110 | 125      | 140 | 155      | 170 | 185      | 200 | 215      | 230 | 245      | 260 | 275      | 285 | 320    | 2.1 [4.7]          |

SEE DRAWING ON PREVIOUS PAGE

THIS STANDARD BECOMES EFFECTIVE SEPTEMBER 1ST 2007