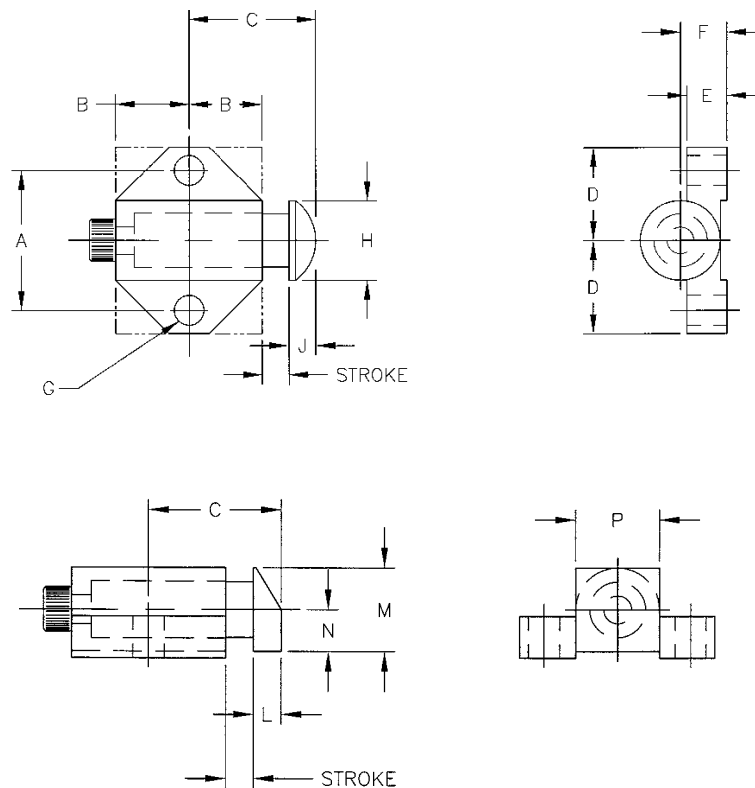


# SPRING LOADED DEVICES



## Spring Stops

- Material:
  - Body: Aluminum
  - Nose: Steel
- Part Nos. 53100 and 53103 have triangular bodies
- Part Nos. 53101, 53102, 53104 and 53105 have squared bodies as denoted by phantom line drawing
- Two nose styles available:
  - 53100-53102: Square Nose
  - 53103-53105: Round Button Nose
- Ideal for holding and securing parts while clamping



Part No.	End Force (lbs)		Stroke	A	B	C	D	E	F	G	H	J	L	M	N	P	Nose Style
	Initial	Final															
<b>53100</b>	5	15	1/8	21/32	11/32	19/32	7/16	3/16	7/32	0.128	-	-	1/8	3/8	3/16	3/8	Square
<b>53101</b>	2	26	3/16	1-1/8	1/2	15/16	3/4	1/4	5/16	0.193	-	-	1/4	5/8	5/16	5/8	Square
<b>53102</b>	16	48	1/4	1-1/2	11/16	1-1/4	1	5/16	17/32	0.257	-	-	5/16	3/4	3/8	3/4	Square
<b>53103</b>	5	15	1/8	21/32	11/32	19/32	7/16	3/16	7/32	0.128	3/8	1/8	-	-	-	-	Round Button
<b>53104</b>	2	26	3/16	1-1/8	1/2	7/8	3/4	1/4	5/16	0.193	9/16	3/16	-	-	-	-	Round Button
<b>53105</b>	16	48	1/4	1-1/2	11/16	1-11/64	1	1/8	17/32	0.257	13/16	1/4	-	-	-	-	Round Button