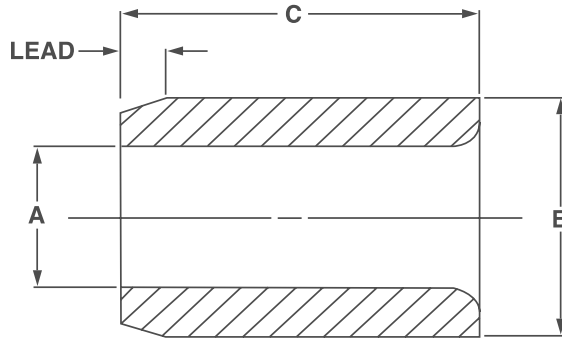


# Headless Press Fit Drill Bushings

## PTW Type ANSI Thin Wall Bushings



### KEY FEATURES

- / Diameters from 0.0156 to 1.1250
- / Hardened to 60-65 HRC
- / OD lead for easy installation
- / ID radius improves drill entry
- / OD ground to press fit size
- / Thin wall space saving feature

### APPLICATION

The 'PTW Type' drill bushing has all the features of the 'P Type' but with the added

feature of a thin wall. Where space is absolute paramount, the thin wall bushing allows closer hole spacing. Headless press fit bushings are pressed into the plate to achieve a flush surface in conjunction with a simple drilling and reaming operation.

### ORDERING INSTRUCTIONS

When Ordering State: Quantity, Symbol, Bore Size and whether it's a Drill or Reamer. Example: 6, P-TW-24-6-13/64

### NOTES

- / For general ordering information and technical data see pages 5-7
- / Price list codes detailed below; please see price list.



| Bore Size<br>A*        | Outside Diameter<br>B | C: Bushing Length and Price Code Number |      |       |       |       |        |         |         |        |        |        |    |        |  |
|------------------------|-----------------------|---|------|-------|-------|-------|--------|---------|---------|--------|--------|--------|----|--------|--|
|                        |                       | Prefix                                  | 1/4" | 5/16" | 3/8"  | 1/2"  | 5/8"   | 3/4"    | 1"      | 1 1/4" | 1 1/2" | 1 3/4" | 2" | 2 1/4" |  |
| 0.0135<br>to<br>0.0280 | 3/16                  | 0.1891                                  | P-TW | .12-4 | -12-5 | -12-6 | -12-8  | -12-10  | -12-12  |        |        |        |    |        |  |
|                        |                       | 0.1888                                  |      | POA   | POA   | POA   | POA    | POA     | POA     |        |        |        |    |        |  |
| 0.0292<br>to<br>0.0591 | 3/16                  | 0.1891                                  | P-TW | -12-4 | -12-5 | -12-6 | -12-8† | -12-10† | -12-12† |        |        |        |    |        |  |
|                        |                       | 0.1888                                  |      | POA   | POA   | POA   | POA    | POA     | POA     |        |        |        |    |        |  |
| 0.0595<br>to<br>0.0625 | 3/16                  | 0.1891                                  | P-TW | -12-4 | -12-5 | -12-6 | -12-8  | -12-10  | -12-12• |        |        |        |    |        |  |
|                        |                       | 0.1888                                  |      | 206   | 210   | 212   | 213    | 226     | 222     |        |        |        |    |        |  |
| 0.0635<br>to<br>0.0995 | 3/16                  | 0.1891                                  | P-TW | -12-4 | -12-5 | -12-6 | -12-8  | -12-10  | -12-12• |        |        |        |    |        |  |
|                        |                       | 0.1888                                  |      | 138   | 146   | 151   | 153    | 158     | 161     |        |        |        |    |        |  |
| 0.0995<br>to<br>0.1406 | 1/4                   | 0.2516                                  | P-TW | -16-4 | -16-5 | -16-6 | -16-8  | -16-10  | -16-12  |        |        |        |    |        |  |
|                        |                       | 0.2513                                  |      | 134   | 137   | 142   | 146    | 152     | 155     |        |        |        |    |        |  |
| 0.1406<br>to<br>0.1910 | 5/16                  | 0.3141                                  | P-TW | -20-4 | -20-5 | -20-6 | -20-8  | -20-10  | -20-12  | -20-16 |        |        |    |        |  |
|                        |                       | 0.3138                                  |      | 123   | 126   | 129   | 130    | 134     | 135     | 140    |        |        |    |        |  |
| 0.1935<br>to<br>0.2500 | 3/8                   | 0.3766                                  | P-TW | -24-4 | -24-5 | -24-6 | -24-8  | -24-10  | -24-12  | -24-16 |        |        |    |        |  |
|                        |                       | 0.3763                                  |      | 118   | 119   | 122   | 123    | 126     | 129     | 137    |        |        |    |        |  |
| 0.2340<br>to<br>0.2500 | 7/16                  | 0.4392                                  | P-TW | -28-4 | -28-5 | -28-6 | -28-8  | -28-10  | -28-12  | -28-16 |        |        |    |        |  |
|                        |                       | 0.4389                                  |      | 118   | 119   | 122   | 123    | 126     | 129     | 137    |        |        |    |        |  |
| 0.2950<br>to<br>0.3437 | 9/16                  | 0.5642                                  | P-TW | -36-4 | -36-5 | -36-6 | -36-8  | -36-10  | -36-12  | -36-16 |        |        |    |        |  |
|                        |                       | 0.5639                                  |      | 123   | 118   | 120   | 120    | 122     | 123     | 126    |        |        |    |        |  |
| 0.3480<br>to<br>0.4375 | 5/8                   | 0.6267                                  | P-TW |       | -40-5 | -40-6 | -40-8  | -40-10  | -40-12  | -40-16 | -40-20 |        |    |        |  |
|                        |                       | 0.6264                                  |      |       | 118   | 120   | 120    | 122     | 123     | 126    | 144    |        |    |        |  |

Continued on next page

| Bore Size<br>A*        | Outside Diameter<br>B | C: Bushing Length and Price Code Number |      |       |       |       |       |        |        |        |        |        |        |        |        |
|------------------------|-----------------------|---|------|-------|-------|-------|-------|--------|--------|--------|--------|--------|--------|--------|--------|
|                        |                       | Prefix                                  | 1/4" | 5/16" | 3/8"  | 1/2"  | 5/8"  | 3/4"   | 1"     | 1 1/4" | 1 1/2" | 1 3/4" | 2"     | 2 1/4" |        |
| 0.4531<br>to<br>0.5312 | 3/4                   | 0.7518                                  | P-TW |       | -48-5 | -48-6 | -48-8 | -48-10 | -48-12 | -48-16 | -48-20 |        |        |        |        |
| 0.5469<br>to<br>0.6562 | 7/8                   | 0.8768<br>0.8765                        | P-TW |       | 119   | 123   | 123   | 126    | 126    | 130    | 146    |        |        |        |        |
| 0.6719<br>to<br>0.7500 | 1                     | 1.0018<br>1.0015                        | P-TW |       |       |       | -64-8 | -64-10 | -64-12 | -64-16 | -64-20 | -64-24 | -64-28 |        |        |
| 0.7656<br>to<br>0.8437 | 1-1/8                 | 1.1270<br>1.1267                        | P-TW |       |       |       | -72-8 | -72-10 | -72-12 | -72-16 | -72-20 | -72-24 | -72-28 |        |        |
| 0.8594<br>to<br>0.9375 | 1-1/4                 | 1.2520<br>1.2517                        | P-TW |       |       |       |       | -80-10 | -80-12 | -80-16 | -80-20 | -80-24 | -80-28 | -80-32 |        |
| 0.9531<br>to<br>1.0000 | 1-3/8                 | 1.3772<br>1.3768                        | P-TW |       |       |       |       | -88-10 | -88-12 | -88-16 | -88-20 | -88-24 | -88-28 | -88-32 |        |
| 1.0156<br>to<br>1.1250 | 1-1/2                 | 1.5022<br>1.5018                        | P-TW |       |       |       |       |        | -96-12 | -96-16 | -96-20 | -96-24 | -96-28 | -96-32 | -96-36 |
|                        |                       |   |      |       |       |       |       |        | 196    | 189    | 196    | 203    | 206    | 222    | 228    |

\* Standard bore sizes available are per chart shown in rear of catalog – including LETTER, NUMBER and FRACTIONAL SIZES.  
MILLIMETER – from 2.3 mm to 10.5 mm only for selected list designated by on back cover.

• COUNTERBORED – with adequate bearing length – can also be supplied without counterbore upon request.

† COUNTERBORED – 0.0390 to 0.0469 with adequate bearing length; can also be supplied without counterbore upon request.

\* Price on Application, prices subject to change.