

CYLINDER AND SHOCK COMPONENTS

PAGE	DATE	NAAMS CODE	DESCRIPTION	DISCONTINUED
U-1	09/05/12		Cylinder and Shock Accessories	
U-2	01/10/11	ACT101-115	Trunnion Cylinder Mounting Bracket Assy	
U-3	03/16/06	ACT140	Trunnion Block 32 MM Bore	
U-4	03/16/06	ACT141	Trunnion Block 45 MM Bore	
U-5	06/01/12	ACT121-135	Trunion Bushing	
U-6	05/11/11	ACT151-158	Trunnion Cylinder Mounting Bracket Assy Aluminum	X
U-7	05/11/11	ACT160	Trunnion Cylinder Mounting Bracket Aluminum	X
U-8	03/16/06	ACT171-185	Trunnion Mounting Bracket Thrust Washer	
U-9	03/30/06	AHM080-181	Shock Bracket	
U-10	09/05/12	ACL0101A-412A	Clevis Assembly	
U-11	05/21/13	ACL0101A-412A	Clevis Assembly Codes	
U-12	05/11/11	ACL0100	Clevis Casting	
U-13	05/11/11	ACL0101C-110C	Clevis	
U-14	05/11/11	ACL0200	Clevis Casting	
U-15	05/11/11	ACL0201C-206C	Clevis	
U-16	05/11/11	ACL0300	Clevis Casting	
U-17	05/11/11	ACL0301C-305C	Clevis	
U-18	05/11/11	ACL0400	Clevis Casting	
U-19	05/11/11	ACL0401C-412C	Clevis	
U-20	02/19/15	ACL0501-0505	Clevis Pin	
U-21	05/11/11	ACL0511-514	Clevis Composite Bearing	
U-22	09/05/12	ACL0515-516	Clevis Composite Bearing	

TRUNNION CYLINDER MOUNTING BRKT ASSY™

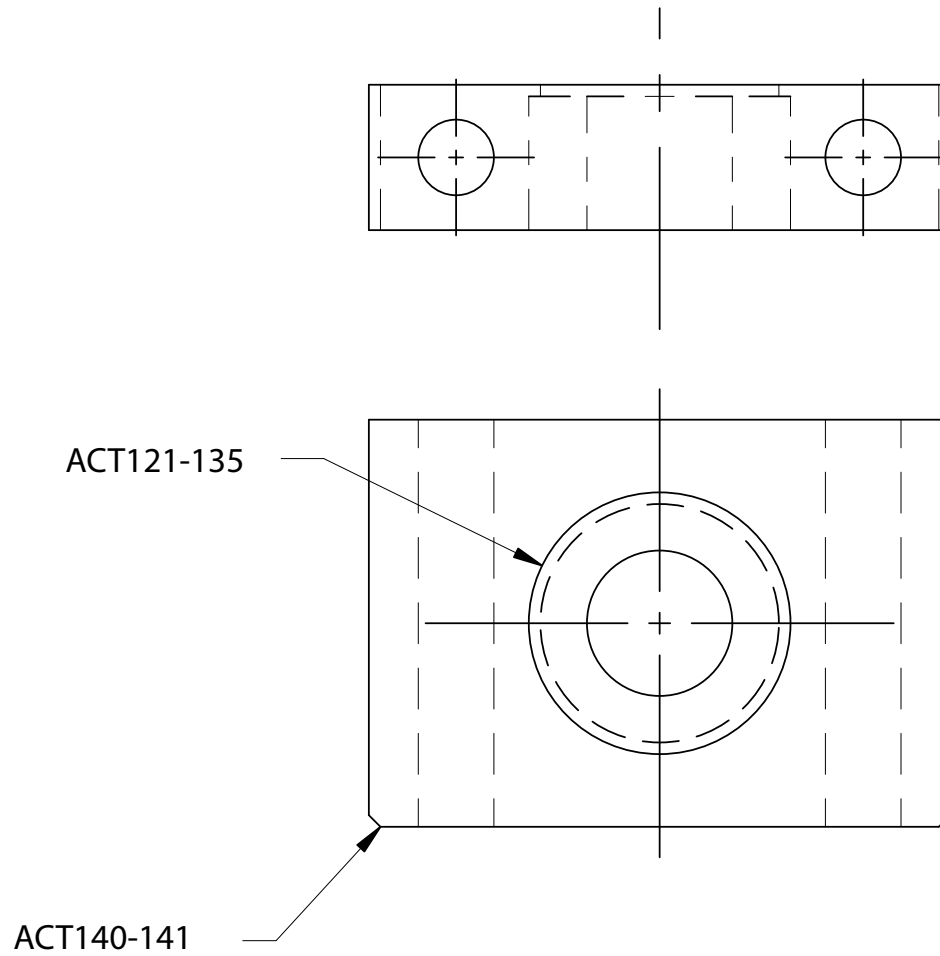
GLOBAL STANDARD COMPONENTS

NAAMS



Assembly

01/10/11



NAAMS CODE	TRUNNION BLOCK	TRUNNION BEARING	ID +0.10/+0.13
ACT101	ACT140	ACT121	12
ACT102		ACT122	15
ACT103		ACT123	16
ACT104		ACT124	18
ACT105		ACT125	19.05(0.75")
ACT106		ACT126	20
ACT107		ACT127	25
ACT108		ACT128	25.4(1.00")
ACT111	ACT141	ACT131	32.00
ACT112		ACT132	34.93(1.375")
ACT113		ACT133	36.00
ACT114		ACT134	38.1(1.500")
ACT115		ACT135	40

A

TRUNNION BLOCK 32 MM BORE ACT140



TOLERANCES UNLESS OTHERWISE SPECIFIED:

1 PLACE MACHINING ± 0.3

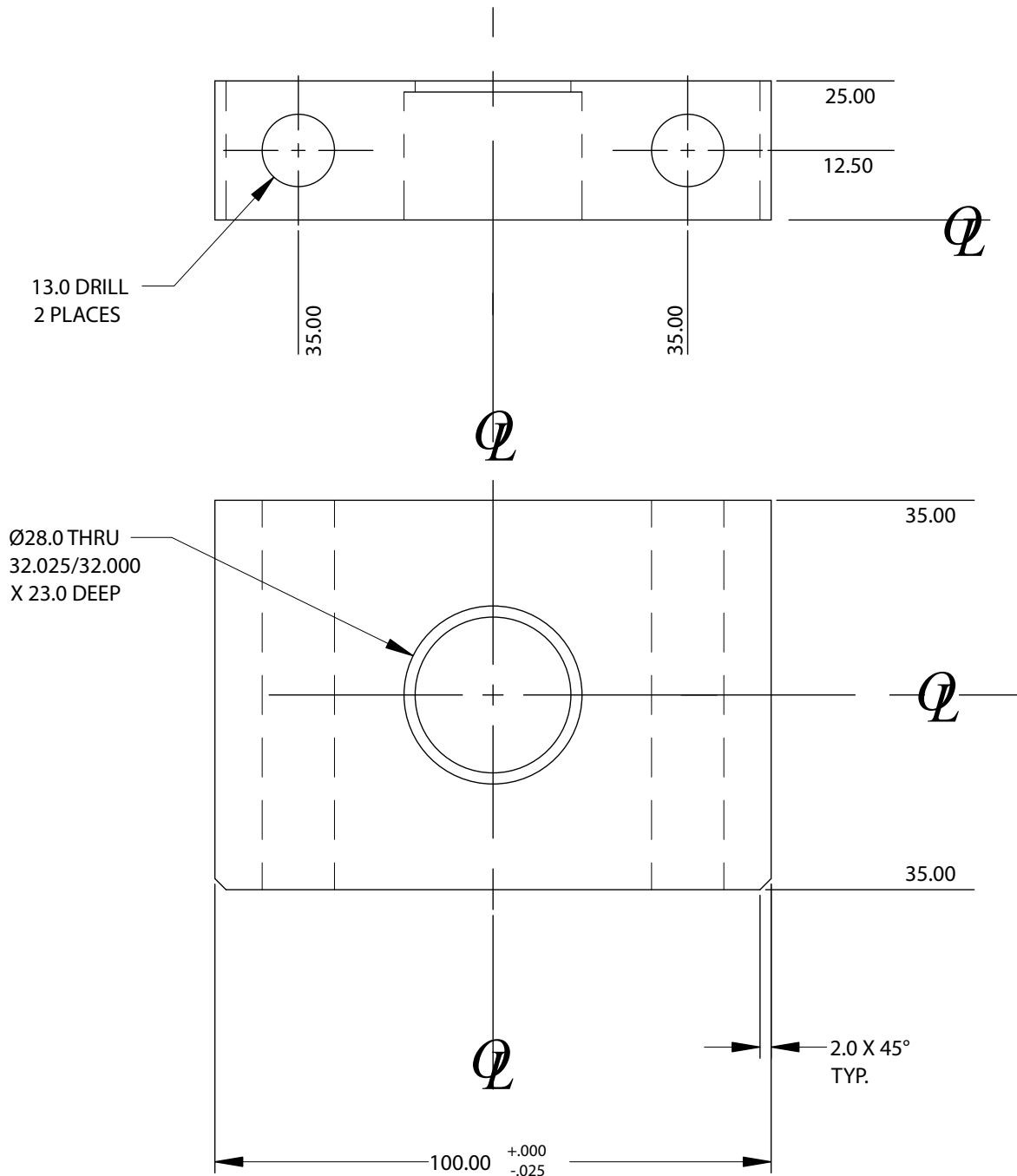
2 PLACE

± 0.08 BETWEEN MACHINED SURFACES

± 0.13 TO SCREW HOLES, NON ACCUMULATIVE

Weight 1.07 kg

MATERIAL: STEEL



TRUNNION BLOCK 45MM BORE ACT141

TOLERANCES UNLESS OTHERWISE SPECIFIED:

1 PLACE MACHINING ± 0.3

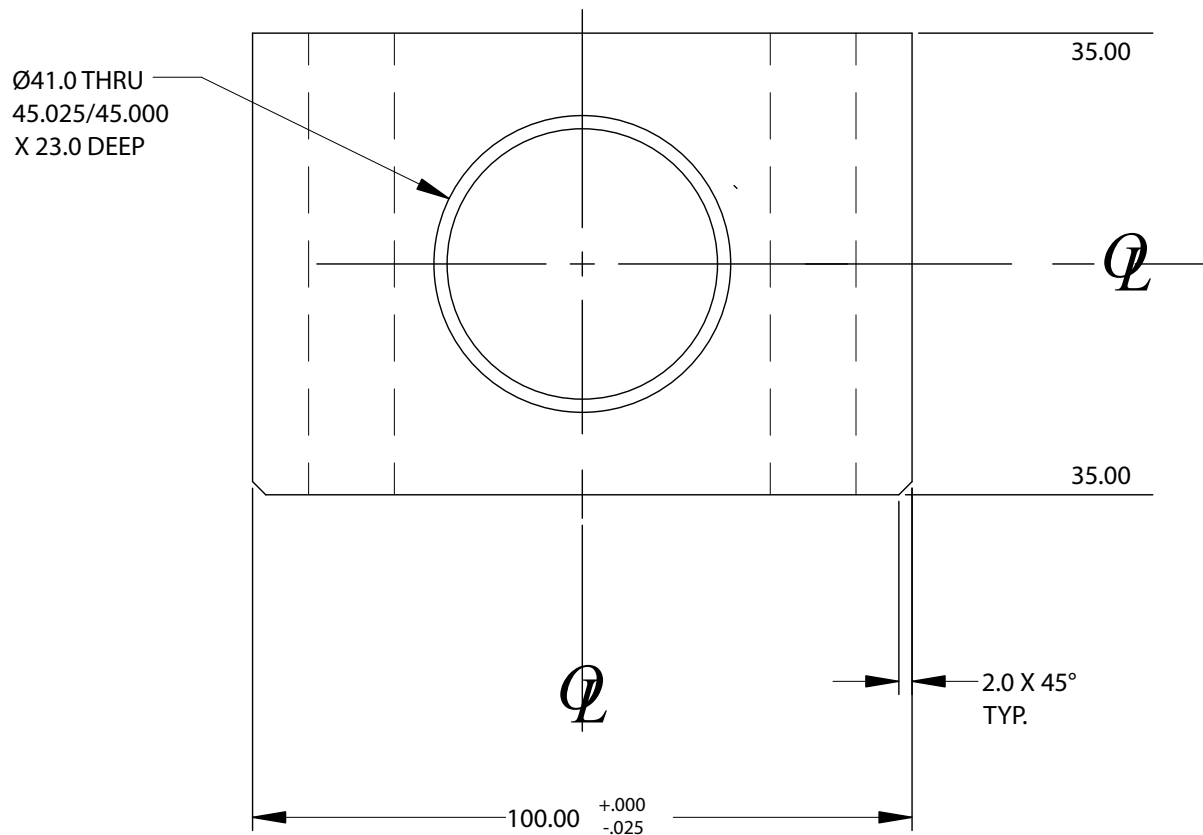
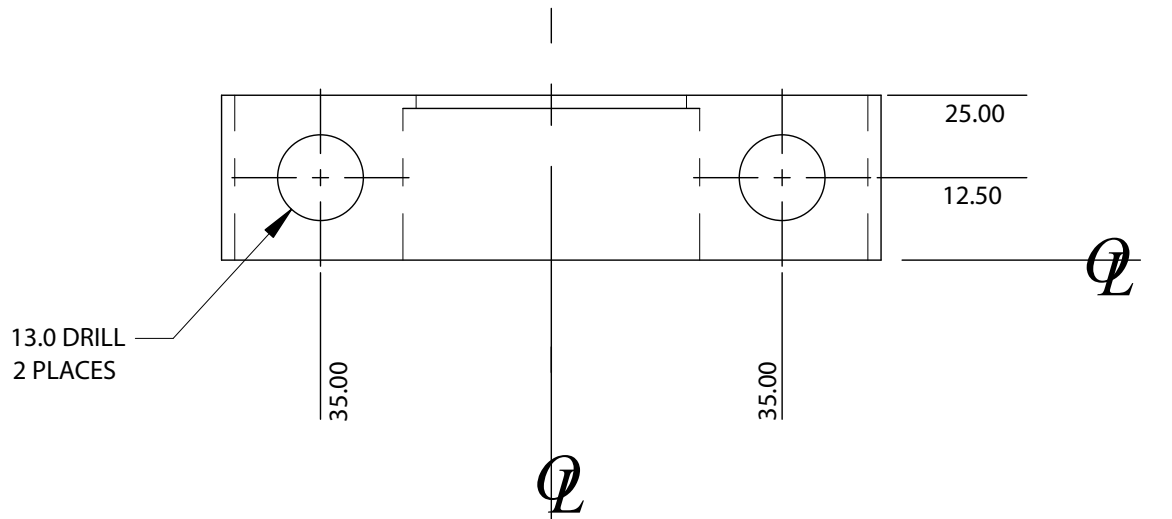
2 PLACE

± 0.08 BETWEEN MACHINED SURFACES

± 0.13 TO SCREW HOLES, NON ACCUMULATIVE

Weight 0.92 kg

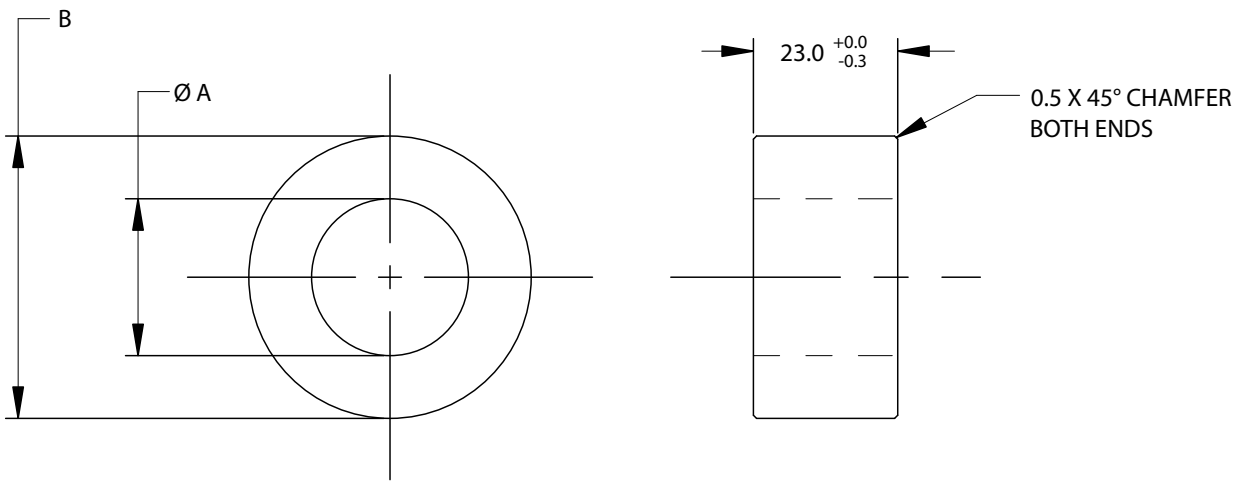
MATERIAL: STEEL



TRUNNION BUSHING

TOLERANCES UNLESS OTHERWISE SPECIFIED:
 1 PLACE ± 0.3
 Max Weight 0.02 kg

MATERIAL: POLYESTER REINFORCED EPOXY COMPOSITE WITH PTFE AND MS2 FILLERS. MINIMUM COMPRESSIVE STRENGTH NORMAL TO THE LAMINATE 240 MPa (35 ksi)

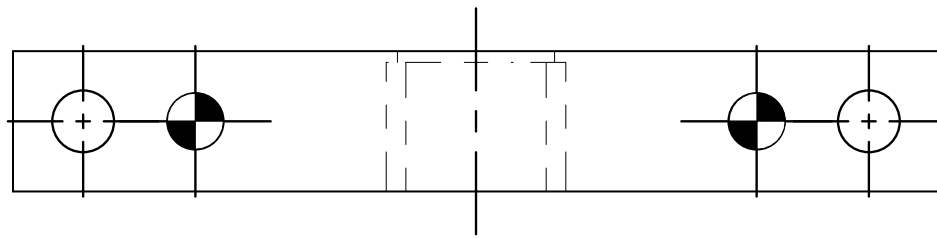


A

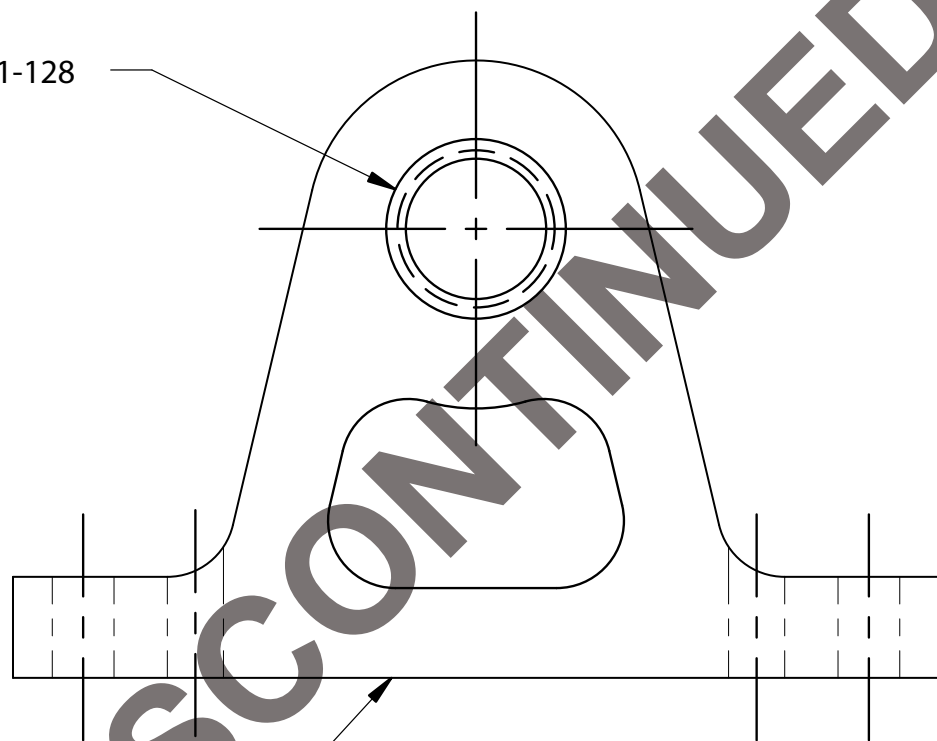
NAAMS CODE	A +0.10 / +0.13	B +0.05 / -0.00
ACT121	12	32.07
ACT122	15	32.07
ACT123	16	32.07
ACT124	18	32.07
ACT125	19.05 (0.75")	32.07
ACT126	20	32.07
ACT127	25	32.07
ACT128	25.4 (1.000")	32.07
ACT131	32.00	45.08
ACT132	34.93 (1.375")	45.08
ACT133	36.00	45.08
ACT134	38.1 (1.500")	45.08
ACT135	40	45.08

A

TRUNNION CYLINDER MOUNTING BRACKET ASSEMBLY - ALUMINUM



ACT121-128



ACT160

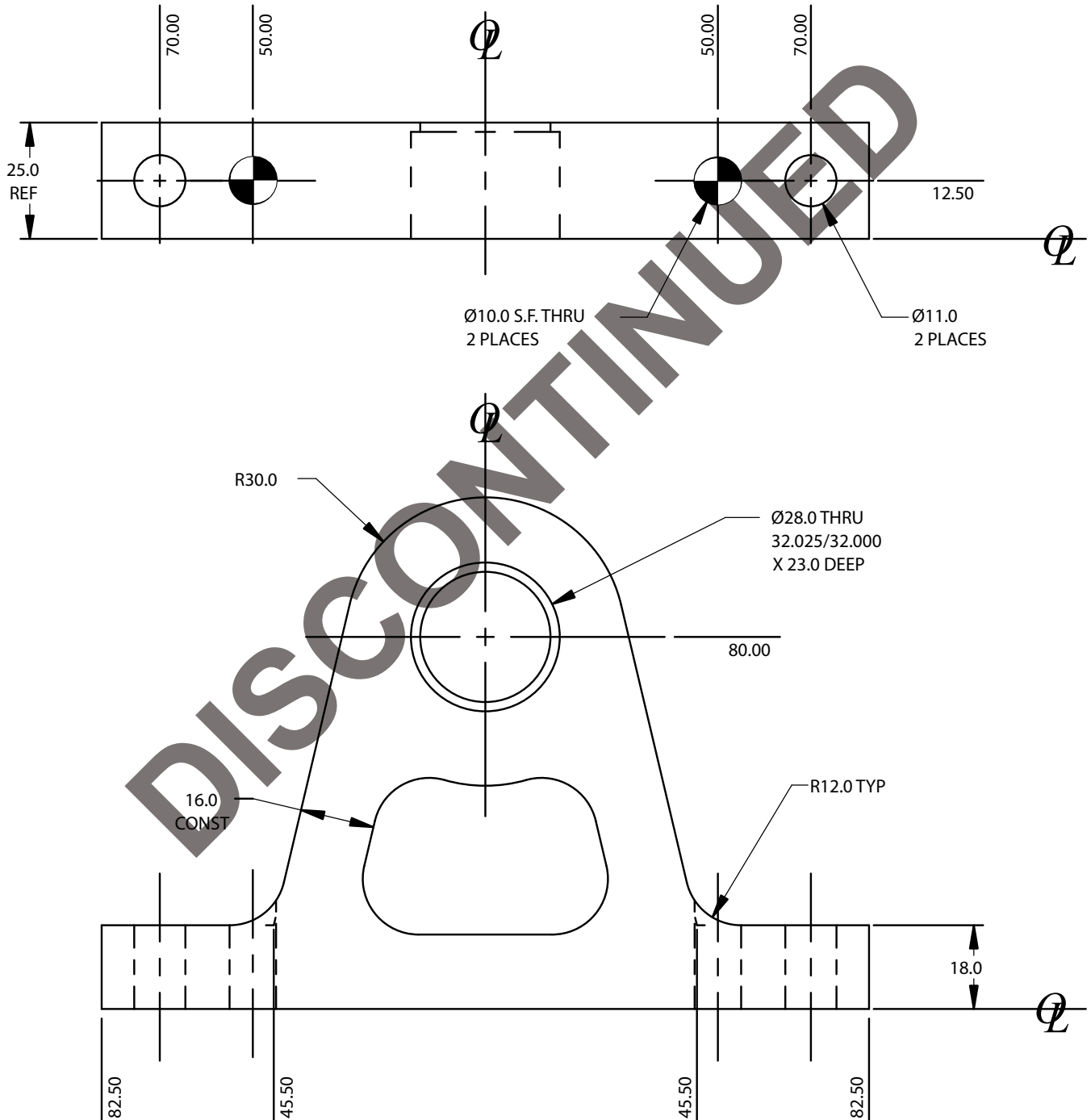
DISCONTINUED

A

NAAMS CODE	TRUNNION BLOCK	TRUNNION BEARING
ACT151	ACT160	ACT121
ACT152		ACT122
ACT153		ACT123
ACT154		ACT124
ACT155		ACT125
ACT156		ACT126
ACT157		ACT127
ACT158		ACT128

TRUNNION BLOCK ALUMINUM ACT160

TOLERANCES UNLESS OTHERWISE SPECIFIED
 1 PLACE MACHINING ± 0.3
 2 PLACE
 ± 0.08 BETWEEN MACHINED SURFACES
 ± 0.13 TO SCREW HOLES, NON ACCUMULATIVE
 ± 0.03 BETWEEN DOWELS IN THE SAME PLANE
 Weight 0.45 kg



A

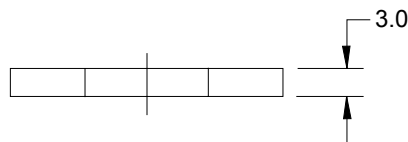
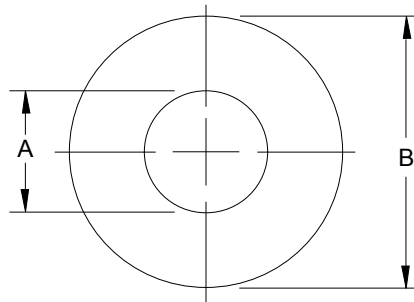
TRUNNION MOUNTING BRACKET THRUST WASHER

METRIC TOLERANCES UNLESS OTHERWISE SPECIFIED:

1 PLACE ± 0.3

Max Weight 0.01 kg

MATERIAL: POLYESTER REINFORCED EPOXY COMPOSITE WITH PTFE AND MS2 FILLERS. MINIMUM COMPRESSIVE STRENGTH NORMAL TO THE LAMINATE 240 MPa (35 ksi)



NAAMS CODE	A +0.10 / +0.50	B	USE WITH ASSEMBLY
ACT171	12	50.8	ACT101 & ACT151
ACT172	15	50.8	ACT102 & ACT152
ACT173	16	50.8	ACT103 & ACT153
ACT174	18	50.8	ACT104 & ACT154
ACT175	19.05 (0.75")	50.8	ACT105 & ACT155
ACT176	20	50.8	ACT106 & ACT156
ACT177	25	50.8	ACT107 & ACT157
ACT178	25.4 (1.000")	50.8	ACT108 & ACT158
ACT181	32	63.5	ACT111
ACT182	34.93 (1.375")	63.5	ACT112
ACT183	36	63.5	ACT113
ACT184	38.1 (1.500")	63.5	ACT114
ACT185	40	63.5	ACT115