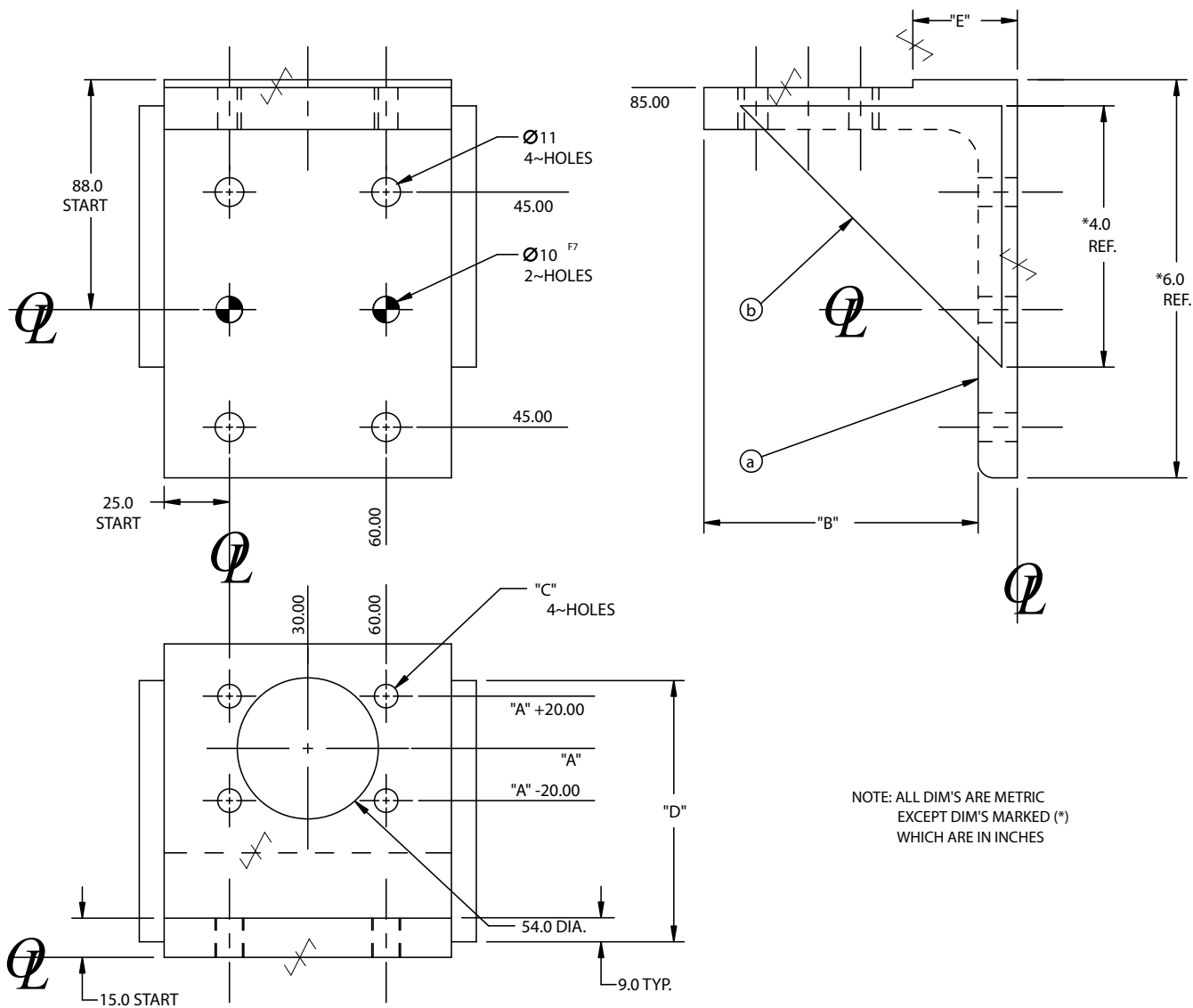


CYLINDER AND SHOCK COMPONENTS

PAGE	DATE	NAAMS CODE	DESCRIPTION	DISCONTINUED
U-1	09/05/12		Cylinder and Shock Accessories	
U-2	01/10/11	ACT101-115	Trunnion Cylinder Mounting Bracket Assy	
U-3	03/16/06	ACT140	Trunnion Block 32 MM Bore	
U-4	03/16/06	ACT141	Trunnion Block 45 MM Bore	
U-5	06/01/12	ACT121-135	Trunion Bushing	
U-6	05/11/11	ACT151-158	Trunnion Cylinder Mounting Bracket Assy Aluminum	X
U-7	05/11/11	ACT160	Trunnion Cylinder Mounting Bracket Aluminum	X
U-8	03/16/06	ACT171-185	Trunnion Mounting Bracket Thrust Washer	
U-9	03/30/06	AHM080-181	Shock Bracket	
U-10	09/05/12	ACL0101A-412A	Clevis Assembly	
U-11	05/21/13	ACL0101A-412A	Clevis Assembly Codes	
U-12	05/11/11	ACL0100	Clevis Casting	
U-13	05/11/11	ACL0101C-110C	Clevis	
U-14	05/11/11	ACL0200	Clevis Casting	
U-15	05/11/11	ACL0201C-206C	Clevis	
U-16	05/11/11	ACL0300	Clevis Casting	
U-17	05/11/11	ACL0301C-305C	Clevis	
U-18	05/11/11	ACL0400	Clevis Casting	
U-19	05/11/11	ACL0401C-412C	Clevis	
U-20	02/19/15	ACL0501-0505	Clevis Pin	
U-21	05/11/11	ACL0511-514	Clevis Composite Bearing	
U-22	09/05/12	ACL0515-516	Clevis Composite Bearing	

SHOCK BRACKET AHM080-AHM181



NOTE: ALL DIM'S ARE METRIC EXCEPT DIM'S MARKED (*) WHICH ARE IN INCHES

STK.

- (a) REQ'D. (1) STL. L-ANGLE ~ "F" x 6" x 3/4" wt. x 110.0mm LG.
- (b) REQ'D. (2) SAE 1020 H.R.S. ~ 3/8" x 4" x "D"mm LG. (ONE MAKES TWO)

NAAMS CODE	A HEIGHT	B	C	D	E	F	WT. kg.
AHM080	80.0	105.0	M8x1.25	100.0	40.0	*6	3.2
AHM081	80.0	105.0	9.0	100.0	40.0	*6	3.2
AHM100	100.0	125.0	M8x1.25	120.0	60.0	*6	3.6
AHM101	100.0	125.0	9.0	120.0	60.0	*6	3.6
AHM120	120.0	145.0	M8x1.25	140.0	80.0	*6	4.0
AHM121	120.0	145.0	9.0	140.0	80.0	*6	4.0
AHM140	140.0	165.0	M8x1.25	160.0	100.0	*8	4.4
AHM141	140.0	165.0	9.0	160.0	100.0	*8	4.4
AHM160	160.0	185.0	M8x1.25	180.0	120.0	*8	4.8
AHM161	160.0	185.0	9.0	180.0	120.0	*8	4.8
AHM180	180.0	205.0	M8x1.25	200.0	140.0	*8	5.2
AHM181	180.0	205.0	9.0	200.0	140.0	*8	5.2