

# L-BLOCKS COMPONENTS INDEX

PAGE	DATE	NAAMS CODE	DESCRIPTION
<a href="#">H-1</a>	02/12/14		L-Blocks Components Index
<a href="#">H-1.1</a>	02/12/14		L-Blocks Components Index
<a href="#">H-2</a>	08/13/07	Discontinued	L-Block (Full Metric) (3 and 4-Hole)
<a href="#">H-3</a>	02/12/14	ALB020M – ALB023M	L-Block (Full Metric) (3 and 4-Hole)
<a href="#">H-4</a>	08/13/07	Discontinued	L-Block (Full Metric) (3-Hole)
<a href="#">H-5</a>	02/12/14	ALB050M – ALB061M	L-Block (Full Metric) (3-Hole)
<a href="#">H-6</a>	02/12/14	ALB070M – ALB081M	L-Block (Full Metric) (4-Hole)
<a href="#">H-7</a>	08/13/07	Discontinued	L-Block (Full Metric) (3-Hole, Wide)
<a href="#">H-8</a>	02/12/14	ALB100M – ALB103M	L-Block (Full Metric) (3-Hole, Wide)
<a href="#">H-9</a>	02/12/14	ALB110M R/L – ALB113M R/L	L-Block (Full Metric) (4-Hole, Wide)
<a href="#">H-10</a>	02/12/14	ALB115M & ALB116M	L-Block (Full Metric) (4-Hole, Wide)
<a href="#">H-11</a>	08/13/07	Discontinued	L-Block (Full Metric) (T-Shaped)
<a href="#">H-12</a>	02/12/14	ALB130M – ALB133M	L-Block (Full Metric) (T-Shaped)
<a href="#">H-13</a>	02/12/14	ALB140M – ALB151M	L-Block (Full Metric) (T-Shaped)
<a href="#">H-14</a>	08/13/07	Discontinued	L-Block (Small) (Full Metric) (3-Hole)
<a href="#">H-15</a>	08/13/07	Discontinued	L-Block (Small) (Full Metric) (4-Hole)
<a href="#">H-16</a>	08/13/07	Discontinued	L-Block (Small) (Full Metric) (3-Hole Wide)
<a href="#">H-17</a>	08/13/07	Discontinued	L-Block (Small) (Full Metric) (4-Hole Wide)
<a href="#">H-18</a>	08/13/07	Discontinued	L-Block (Small) (Full Metric) (T-Shaped)
<a href="#">H-19</a>	08/13/07	Discontinued	L-Block (Small) (Full Metric) (T-Shaped)
<a href="#">H-20</a>	08/13/07	Discontinued	L-Block (3 and 4-Hole, Inch Dimension Holes)
<a href="#">H-21</a>	02/12/14	ALB020 – ALB023	L-Block (3 and 4-Hole, Inch Dimension Holes)
<a href="#">H-22</a>	08/13/07	Discontinued	L-Block (3-Hole, Inch Dimension Holes)
<a href="#">H-23</a>	02/12/14	ALB050 – ALB061	L-Block (3-Hole, Inch Dimension Holes)
<a href="#">H-24</a>	02/12/14	ALB050 – ALB061	L-Block (4-Hole, Inch Dimension Holes)
<a href="#">H-25</a>	08/13/07	Discontinued	L-Block (3-Hole, Wide, Inch Dimension Holes)
<a href="#">H-26</a>	02/12/14	ALB100 – ALB103	L-Block (3-Hole, Wide, Inch Dimension Holes)
<a href="#">H-27</a>	02/12/14	ALB110 – ALB113	L-Block (4-Hole, Wide, Inch Dimension Holes)
<a href="#">H-28</a>	02/12/14	ALB115 – ALB116	L-Block (4-Hole, Wide, Inch Dimension Holes)

# L-BLOCKS COMPONENTS INDEX

PAGE	DATE	NAAMS CODE	DESCRIPTION
<a href="#">H-29</a>	08/13/07	Discontinued	L-Block (T-Shaped, Inch Dimension Holes)
<a href="#">H-30</a>	02/12/14	ALB130 – ALB133	L-Block (T-Shaped, Inch Dimension Holes)
<a href="#">H-31</a>	02/12/14	ALB140 – ALB151	L-Block (T-Shaped, Inch Dimension Holes)
<a href="#">H-32</a>	08/13/07	Discontinued	L-Block (Small) (3-Hole, Inch Dimension Holes)
<a href="#">H-33</a>	08/13/07	Discontinued	L-Block (Small) (4-Hole, Inch Dimension Holes)
<a href="#">H-34</a>	08/13/07	Discontinued	L-Block (Small) (Wide, Inch Dimension Holes)
<a href="#">H-35</a>	08/13/07	Discontinued	L-Block (Small) (Wide, Inch Dimension Holes)
<a href="#">H-36</a>	08/13/07	Discontinued	L-Block (Small) (T-Shaped, Inch Dimension Holes)
<a href="#">H-37</a>	08/13/07	Discontinued	L-Block (Small) (T-Shaped, Inch Dimension Holes)
<a href="#">H-38</a>	02/12/14	ALB320M – ALB323M	L-Block – 20 mm Series (Full Metric)
<a href="#">H-39</a>	03/31/10	Discontinued	L-Block – 20 mm Series (Full Metric)
<a href="#">H-40</a>	02/12/14	ALB370M – ALB381M	L-Block – 20 mm Series (Full Metric)
<a href="#">H-41</a>	09/05/12	Discontinued	L-Block – 20 mm Series (Full Metric)
<a href="#">H-42</a>	02/12/14	ALB410M – ALB413M	L-Block – 20 mm Series (Full Metric)
<a href="#">H-43</a>	02/12/14	ALB415M – ALB416M	L-Block – 20 mm Series (Full Metric)
<a href="#">H-44</a>	02/12/14	ALB430M – ALB433M	L-Block – 20 mm Series (Full Metric)
<a href="#">H-45</a>	02/12/14	ALB330M – ALB341M	L-Block – 20 mm Series (Full Metric)
<a href="#">H-46</a>	02/12/14	ALB510M - ALB513M	L-Block - 20mm Series (Full Metric)
<a href="#">H-47</a>	02/12/14	ALB521M - ALB524M	L-Block - 20mm Series (Full Metric)
<a href="#">H-48</a>	02/12/14	ALB531M - ALB532M	L-Block - 20mm Series (Full Metric)
<a href="#">H-49</a>	02/12/14	ALB551M - ALB554M	L-Block - 20mm Series (Full Metric)
<a href="#">H-50</a>	02/12/14	ALB540M - ALB543M	L-Block - 20mm Series (Full Metric)
<a href="#">H-51</a>	02/12/14	ALB560M - ALB563M	L-Block - 20mm Series (Full Metric)
<a href="#">H-52</a>	02/12/14	ALB570M - ALB573M	L-Block - 20mm Series (Full Metric)
<a href="#">H-53</a>	02/12/14	ALB580M - ALB583M	L-Block - 20mm Series (Full Metric)

# L BLOCK (FULL METRIC) ALB120M, 121M, 122M AND 123M

GLOBAL STANDARD COMPONENTS



Assembly

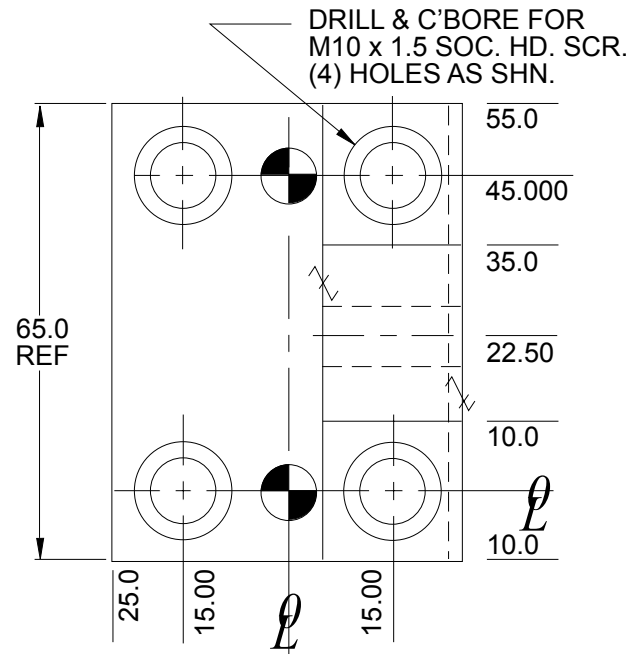
08/13/07

B

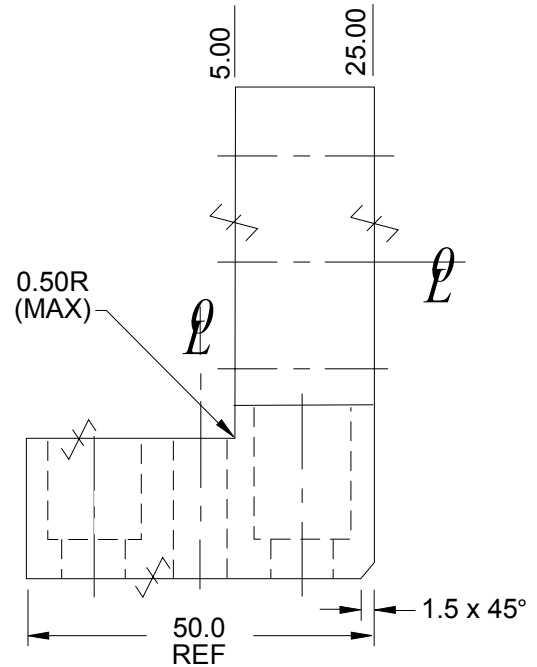
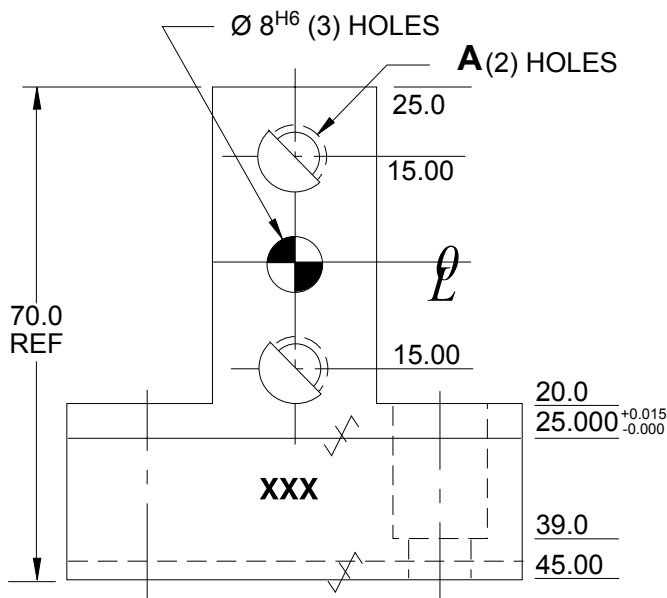
Tolerances: 1 PLACE  $\pm 0.3$   
2 PLACE  $\pm 0.03$   
3 PLACE  $\pm 0.020$

✓ SURFACES TO BE FLAT, PARALLEL & PERPENDICULAR TO WITHIN 0.015 T.I.R.

NOTE: Identify with NAAMS CODE number as shown **XXX**.  
Black Oxide Finish



A



SEE PAGE B-1.1 FOR GLOBAL MATERIALS CHART


NAAMS CODE	A	MATERIAL
ALB120M	M10 x 1.5	STEEL ASTM A-36
ALB121M	M10 x 1.5	NM Stainless
ALB122M	11.0	STEEL ASTM A-36
ALB123M	11.0	NM Stainless

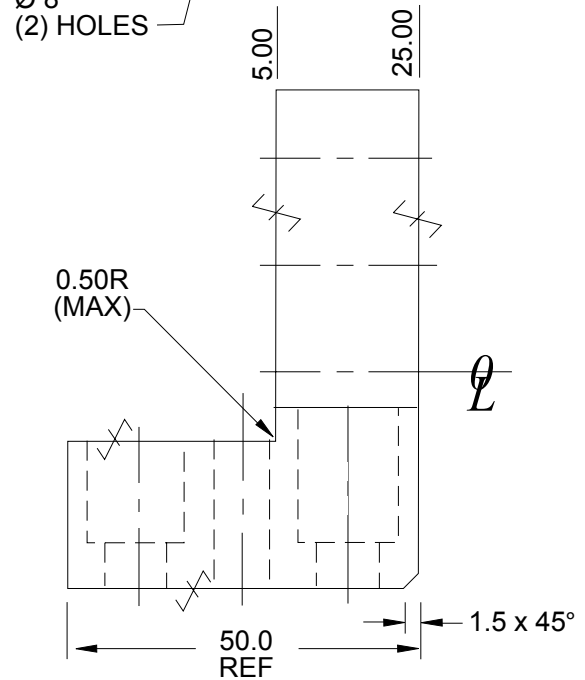
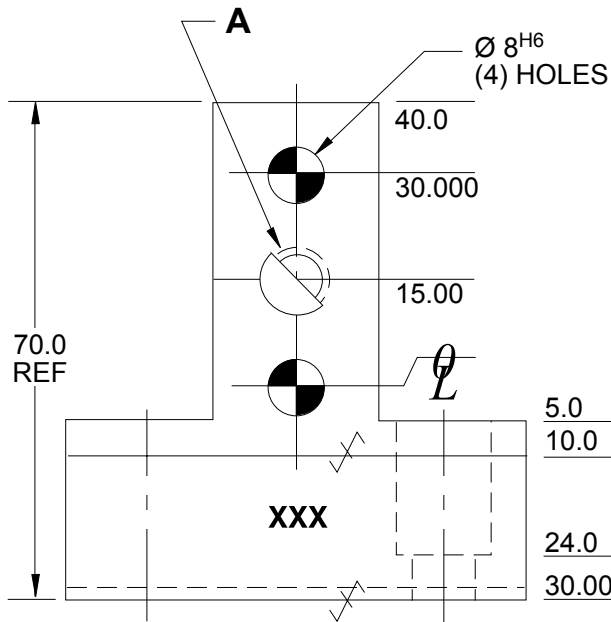
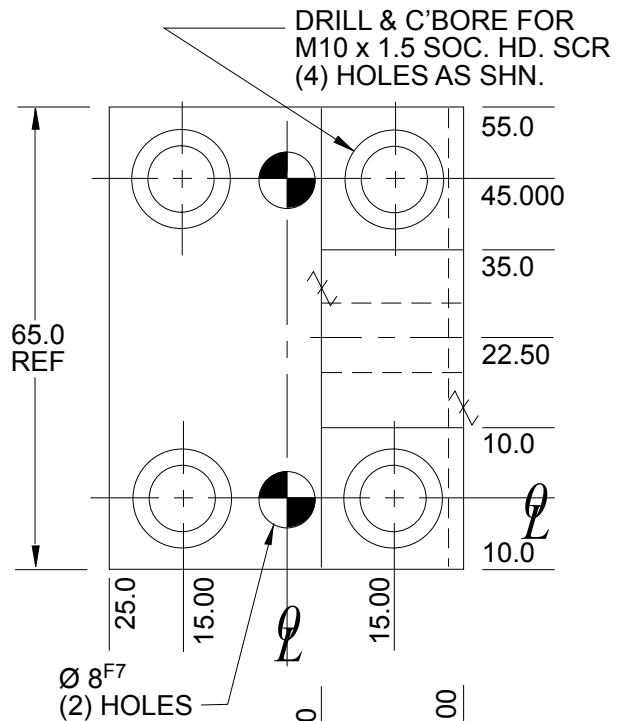
D

C

# L BLOCK (FULL METRIC) ALB130M, 131M, 132M AND 133M

Tolerances: 1 PLACE  $\pm 0.3$   
2 PLACE  $\pm 0.03$   
3 PLACE  $\pm 0.020$

 SURFACES TO BE FLAT, PARALLEL & PERPENDICULAR TO WITHIN 0.015 T.I.R.  
NOTE: Identify with NAAMS CODE number as shown **XXX**.  
Black Oxide Finish  
No Black Oxide Finish to "SS Type" Components



SEE PAGE B-1.1 FOR GLOBAL MATERIALS CHART

NAAMS CODE	A	MATERIAL	WT. kg
ALB130M	M10 x 1.5	STEEL ASTM A-36	0.59
ALB131M	M10 x 1.5	SS type 303 or 304	0.59
ALB132M	11.0	STEEL ASTM A-36	0.59
ALB133M	11.0	SS type 303 or 304	0.59

A  
G

D

F  
B  
C  
E

# L BLOCK

## ALB120, 121, 122 AND 123

GLOBAL STANDARD COMPONENTS



Assembly

08/13/07

**B**

Tolerances: METRIC

1 PLACE  $\pm 0.3$

2 PLACE  $\pm 0.03$

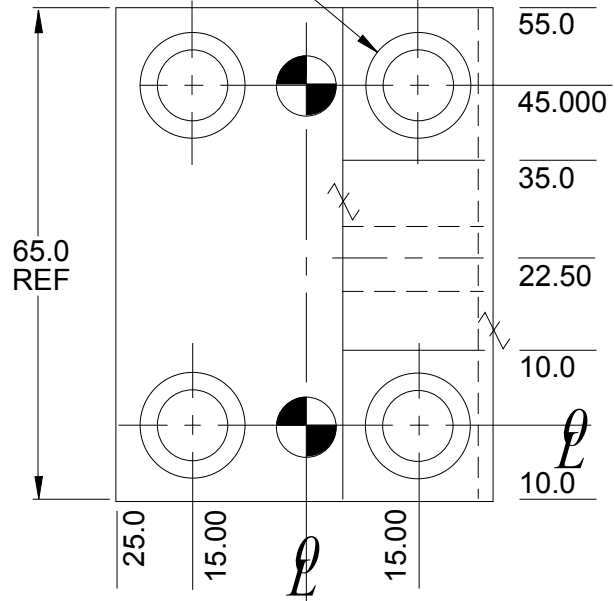
3 PLACE  $\pm 0.020$

✓ SURFACES TO BE FLAT, PARALLEL & PERPENDICULAR TO WITHIN 0.015mm T.I.R.

NOTE: Identify with NAAMS CODE number as shown **XXX**.

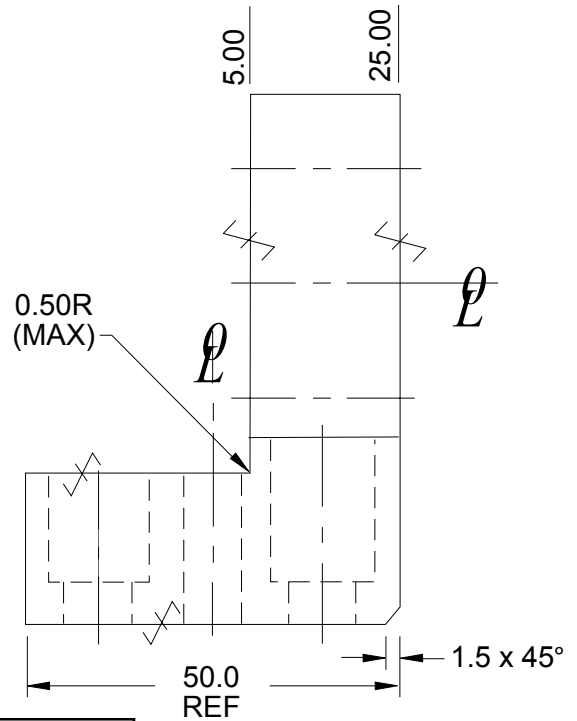
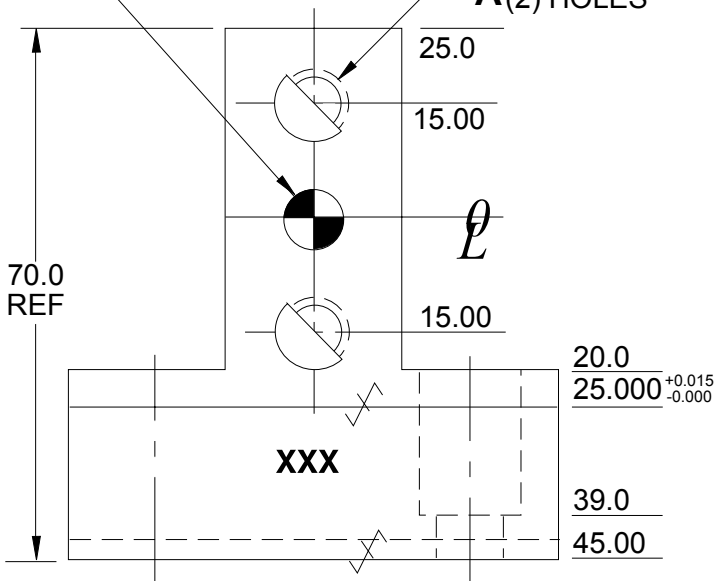
Black Oxide Finish

DRILL & C'BORE FOR 3/8" SOC. HD. SCR. (4) HOLES AS SHN.



**A**

P.F. FOR 5/16" DOWEL (3) HOLES  
**A**(2) HOLES



SEE PAGE B-1.1 FOR GLOBAL MATERIALS CHART

NAAMS CODE	A	MATERIAL
ALB120	3/8 -16 tap	STEEL ASTM A-36
ALB121	3/8 -16 tap	NM Stainless
ALB122	13/32	STEEL ASTM A-36
ALB123	13/32	NM Stainless

**C**

**D**

# L BLOCK ALB130, 131, 132 AND 133

GLOBAL STANDARD COMPONENTS



Assembly

02/12/14

Tolerances: METRIC

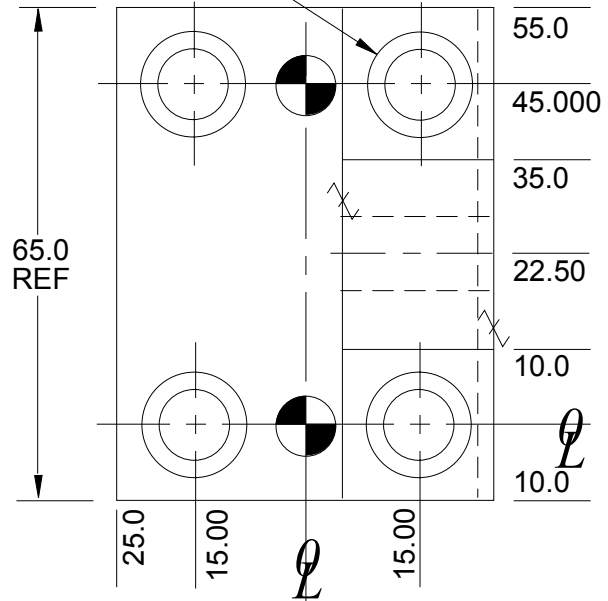
- 1 PLACE  $\pm 0.3$
- 2 PLACE  $\pm 0.03$
- 3 PLACE  $\pm 0.020$

✓ SURFACES TO BE FLAT, PARALLEL & PERPENDICULAR TO WITHIN 0.015mm T.I.R.  
NOTE: Identify with NAAMS CODE number as shown **XXX**.

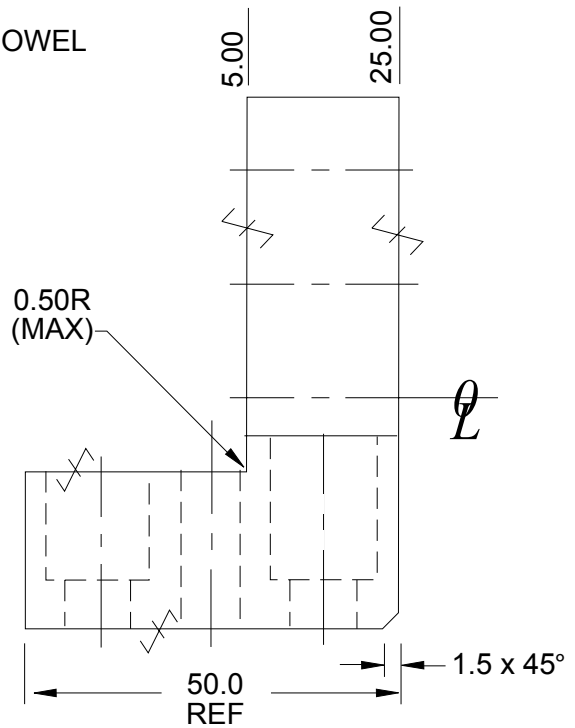
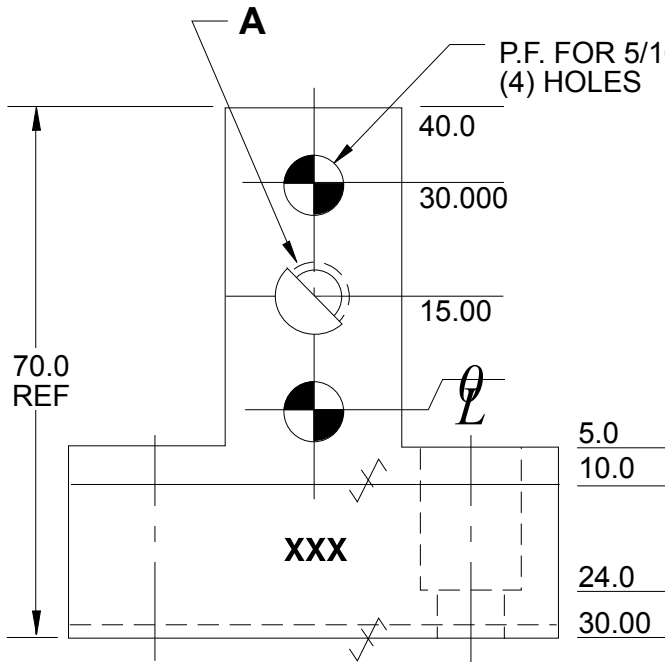
Black Oxide Finish

No Black Oxide Finish to "SS Type" Components

DRILL & C'BORE FOR  
3/8" SOC. HD. SCR  
(4) HOLES AS SHN.



A  
G



SEE PAGE B-1.1 FOR GLOBAL MATERIALS CHART

NAAMS CODE	A	MATERIAL	WT. kg
ALB130	3/8 -16 tap	STEEL ASTM A-36	0.59
ALB131	3/8 -16 tap	SS type 303 or 304	0.59
ALB132	13/32	STEEL ASTM A-36	0.59
ALB133	13/32	SS type 303 or 304	0.59

F  
B  
C  
D  
E

# L BLOCK – 20 mm SERIES

## ALB430M, 431M, 432M AND 433M (FULL METRIC)

GLOBAL STANDARD COMPONENTS



Assembly

02/12/14

Tolerances:

- 1 PLACE  $\pm 0.3$
- 2 PLACE  $\pm 0.03$
- 3 PLACE  $\pm 0.020$

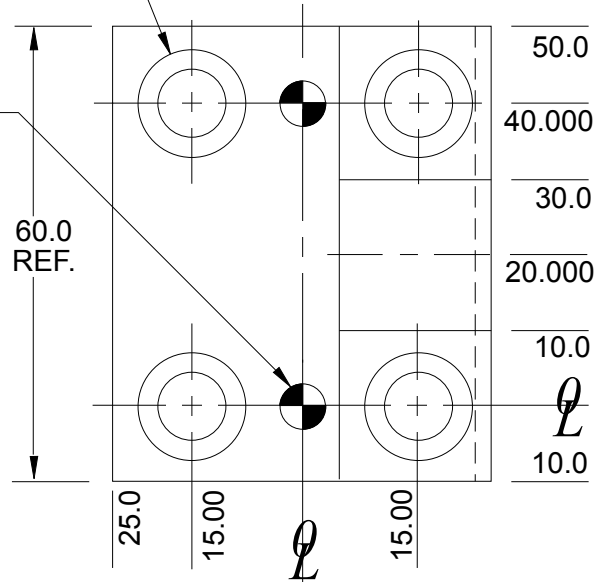
✓ SURFACES TO BE FLAT, PARALLEL & PERPENDICULAR TO WITHIN 0.015 T.I.R.

NOTE: Identify with NAAMS CODE number as shown **XXX**.

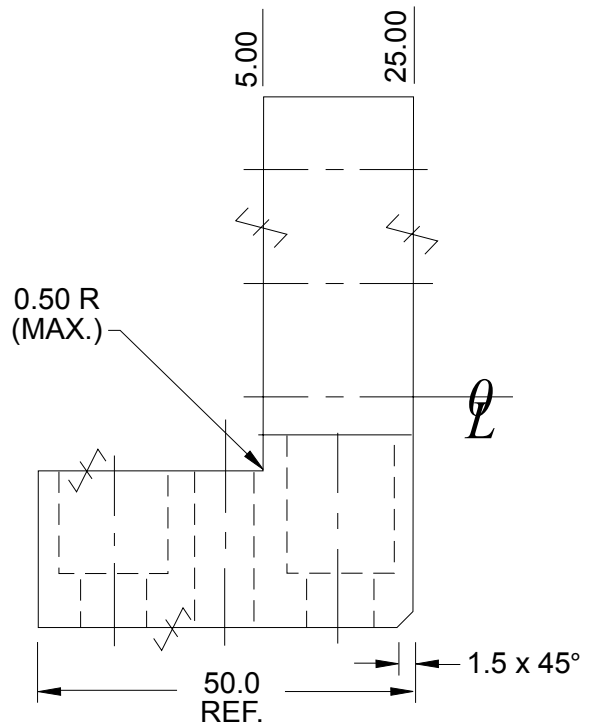
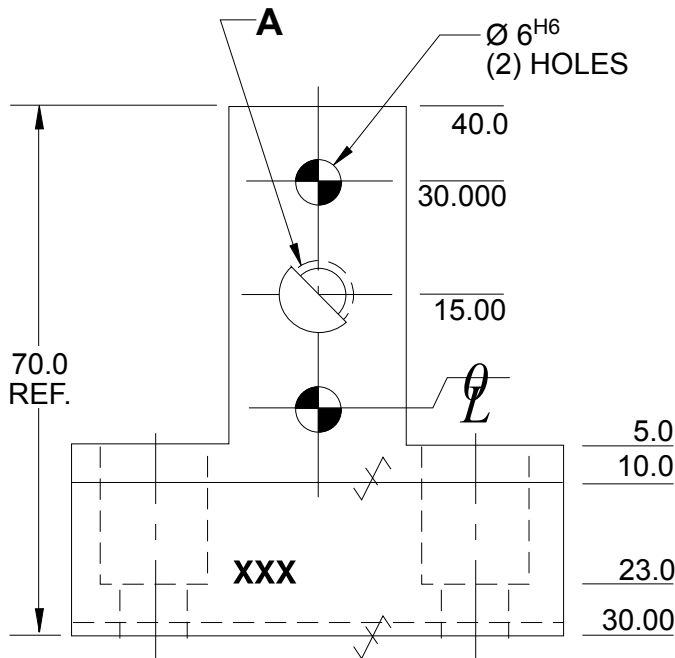
Black Oxide Finish  
No Black Oxide Finish to "SS Type" Components

DRILL & C'BORE FOR M8 x 1.25 SOC. HD. SCR (4) HOLES AS SHN.

$\varnothing 6^{F7}$   
(2) HOLES



E



SEE PAGE B-1.1 FOR GLOBAL MATERIALS CHART

NAAMS CODE	A	MATERIAL	WT. kg
ALB430M	M8 x 1.25	STEEL ASTM A-36	0.54
ALB431M	M8 x 1.25	SS type 303 or 304	0.54
ALB432M	$\varnothing 9.0$	STEEL ASTM A-36	0.54
ALB433M	$\varnothing 9.0$	SS type 303 or 304	0.54

D  
A  
B  
C

# L BLOCK – 20 mm SERIES

## ALB580M THRU ALB583M

### (FULL METRIC)

GLOBAL STANDARD COMPONENTS



Assembly

02/12/14

Tolerances:

- 1 PLACE ± 0.3
- 2 PLACE ± 0.03
- 3 PLACE ± 0.020

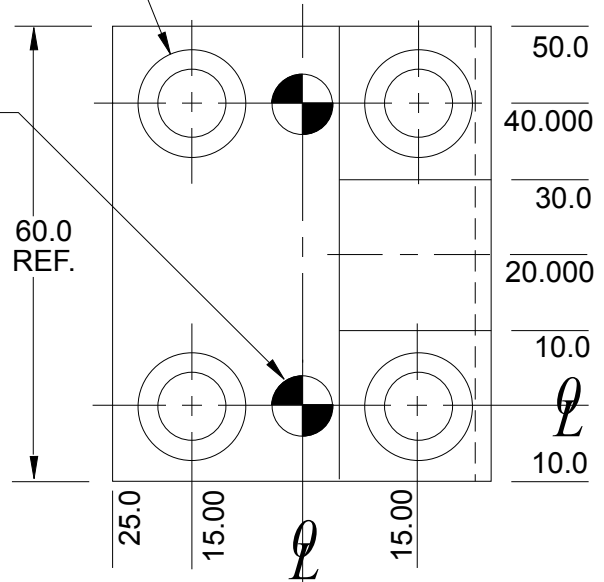
✓ SURFACES TO BE FLAT, PARALLEL & PERPENDICULAR TO WITHIN 0.015 T.I.R.

NOTE: Identify with NAAMS CODE number as shown **XXX**.

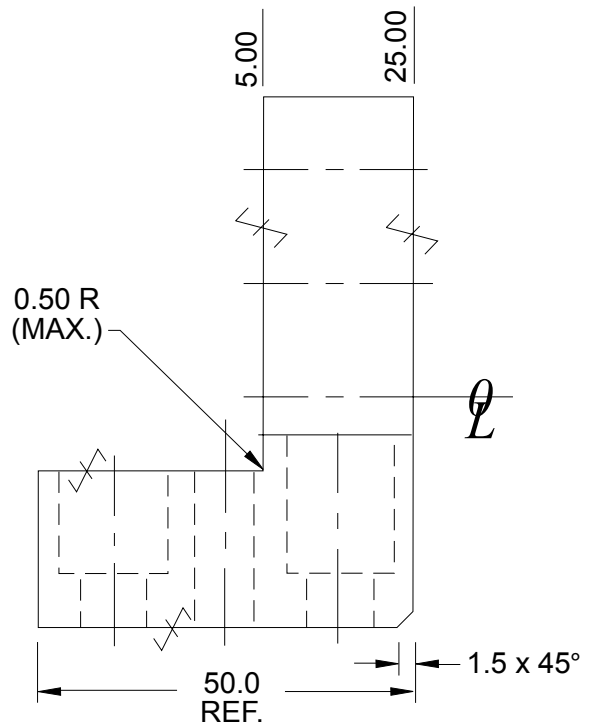
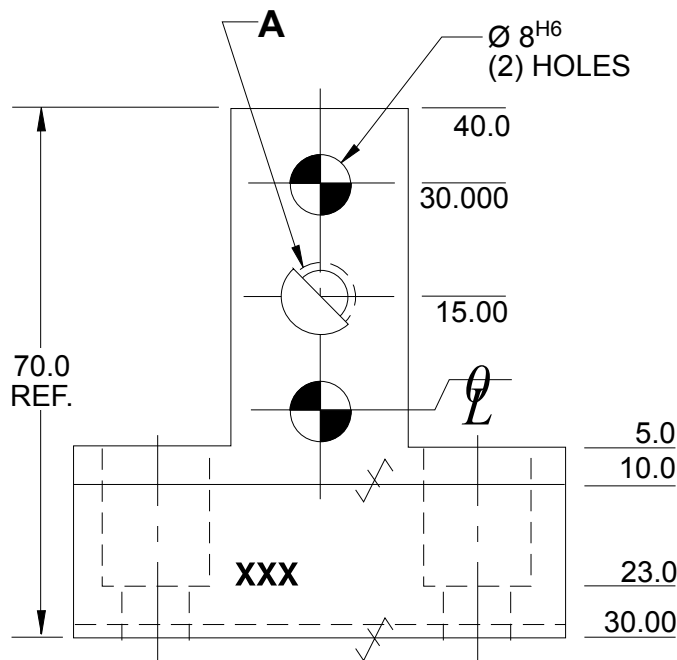
Black Oxide Finish  
No Black Oxide Finish to  
"SS Type" Components

DRILL & C'BORE FOR  
M8 x 1.25 SOC. HD. SCR  
(4) HOLES AS SHN.

∅ 8<sup>F7</sup>  
(2) HOLES



**A**



SEE PAGE B-1.1 FOR GLOBAL MATERIALS CHART

NAAMS CODE	A	MATERIAL	WT. kg
ALB580M	M8 x 1.25	STEEL ASTM A-36	0.54
ALB581M	M8 x 1.25	SS type 303 or 304	0.54
ALB582M	∅ 9.0	STEEL ASTM A-36	0.54
ALB583M	∅ 9.0	SS type 303 or 304	0.54