

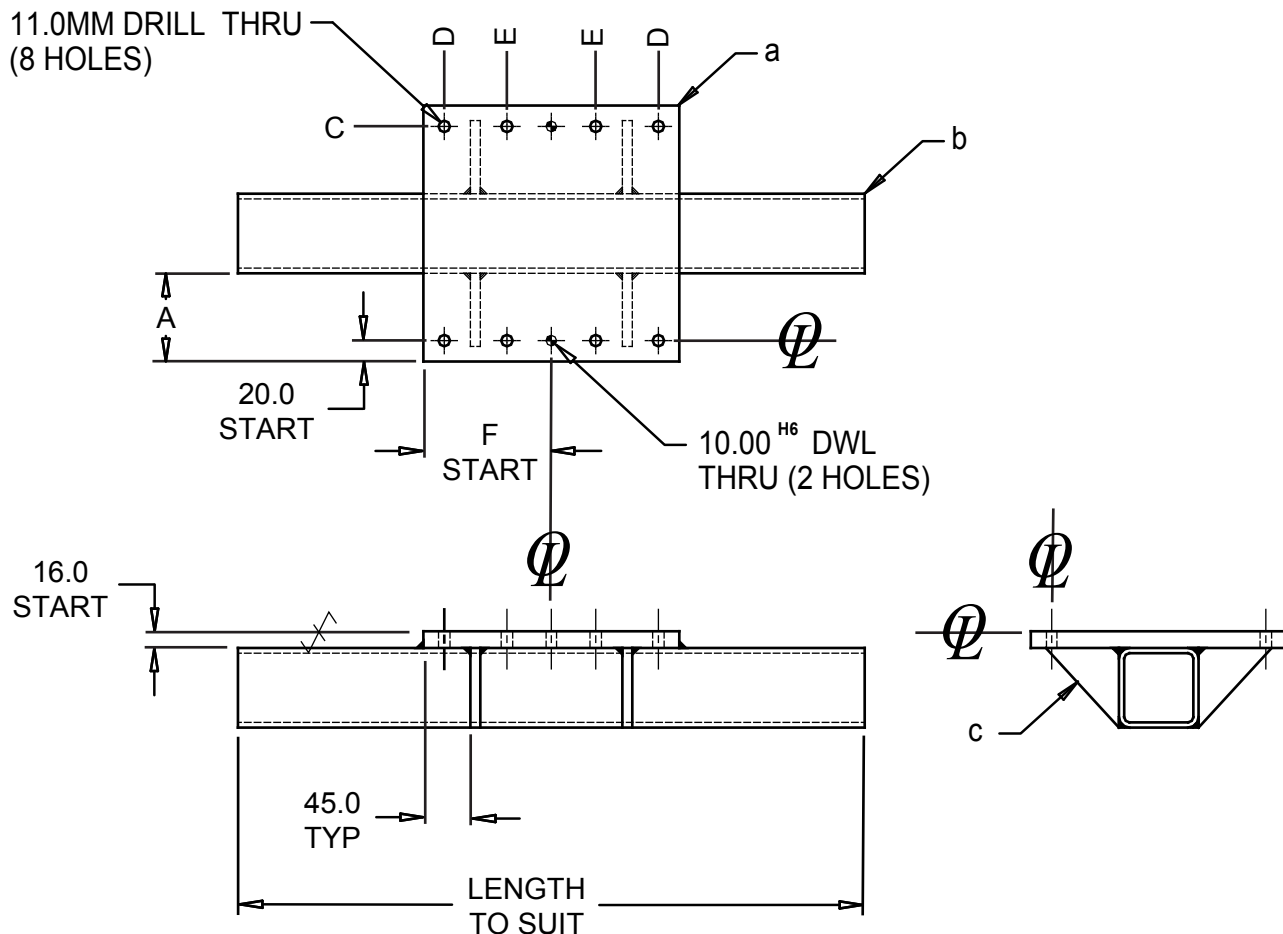
ROBOTICS

PAGE	DATE	NAAMS CODE	DESCRIPTION
Y-1	09/26/08		INDEX
Y-1.1	09/26/08		INDEX
Y-2	02/06/08	AE21 - AE23	END EFFECTOR FRAME CAD STARTER MODELS - ONLY "I" SERIES - 3 X 3 X 3/16 WT
Y-3	02/06/08	AEA001	ROBOT ADAPTER PLATE - AEA001 FOR 125MM BOLT CIRCLE
Y-4	02/06/08	AE24 - AE26	END EFFECTOR FRAME CAD STARTER MODELS - ONLY "I" SERIES - 4 X 4 X 3/16 WT
Y-5	02/06/08	AEA002	ROBOT ADAPTER PLATE - AEA002 FOR 160MM BOLT CIRCLE
Y-6	02/06/08	AE27 - AE29	END EFFECTOR FRAME CAD STARTER MODELS - ONLY "I" SERIES - 6 X 6 X 1/4 WT
Y-7	02/06/08	AEA003	ROBOT ADAPTER PLATE - AEA003 FOR 200MM BOLT CIRCLE
Y-8	02/06/08	AE01 - AE05	END EFFECTOR FRAME CAD STARTER MODELS - ONLY "H" SERIES - 125MM BOLT CIRCLE
Y-9	02/06/08	AE06 - AE10	END EFFECTOR FRAME CAD STARTER MODELS - ONLY "H" SERIES - 160MM BOLT CIRCLE
Y-10	02/06/08	AE11 - AE15	END EFFECTOR FRAME CAD STARTER MODELS - ONLY "H" SERIES - 200MM BOLT CIRCLE
Y-11	09/26/08	AEP001 - AEP010	ROBOT WRIST LOCATING PUCK
Y-12	02/26/08	AWB101 - AWB119	WEDGE BRACKET 160MM BOLT CIRCLE ON WRIST 15 DEGREES
Y-13	02/19/08	AWB101 - AWB119	TABLE

ROBOTICS

PAGE	DATE	NAAMS CODE	DESCRIPTION
Y-14	02/26/08	AWB201 - AWB219	WEDGE BRACKET 160MM BOLT CIRCLE ON WRIST 30 DEGREES
Y-15	02/19/08	AWB201 - AWB219	TABLE
Y-16	02/26/08	AWB301 - AWB319	WEDGE BRACKET 160MM BOLT CIRCLE ON WRIST 45 DEGREES
Y-17	02/19/08	AWB301 - AWB319	TABLE
Y-18	02/26/08	AWB401 - AWB419	WEDGE BRACKET 200MM BOLT CIRCLE ON WRIST 15 DEGREES
Y-19	02/19/08	AWB401 - AWB419	TABLE
Y-20	02/26/08	AWB501 - AWB519	WEDGE BRACKET 200MM BOLT CIRCLE ON WRIST 30 DEGREES
Y-21	02/19/08	AWB501 - AWB519	TABLE
Y-22	02/26/08	AWB601 - AWB617	WEDGE BRACKET 200MM BOLT CIRCLE ON WRIST 45 DEGREES
Y-23	02/19/08	AWB601 - AWB617	TABLE
Y-24	02/26/08	AWB701 - AWB719	WEDGE BRACKET 125MM BOLT CIRCLE ON WRIST 15 DEGREES
Y-25	02/19/08	AWB701 - AWB719	TABLE
Y-26	02/26/08	AWB801 - AWB819	WEDGE BRACKET 125MM BOLT CIRCLE ON WRIST 30 DEGREES
Y-27	02/19/08	AWB801 - AWB819	TABLE
Y-28	02/26/08	AWB901 - AWB919	WEDGE BRACKET 125MM BOLT CIRCLE ON WRIST 45 DEGREES
Y-29	02/19/08	AWB901 - AWB919	TABLE
Y-30	09/26/08	ABF101 - ABF119	FLAT BRACKET 125MM BOLT CIRCLE ON WRIST
Y-31	09/26/08	ABF201 - ABF219	FLAT BRACKET 160MM BOLT CIRCLE ON WRIST
Y-32	09/26/08	ABF302 - ABF319	FLAT BRACKET 200MM BOLT CIRCLE ON WRIST

END EFFECTOR FRAME
CAD STARTER MODELS - ONLY
"I" SERIES
3 X 3 X 3/16 WT



NOTES: WELDED END CAPS TO SUIT

CONTINUOUS WELD UNLESS OTHERWISE SPECIFIED
 IN ACCORDANCE TO AWS D1.1

PAINT SPEC: PER END USER SPECIFICATIONS

STRESS RELIEVE

TOLERANCES:

- 1 PLACE MACHINING ± 0.3
- 1 PLACE FABRICATION ± 1.5
- 2 PLACE ± 0.08 BETWEEN MACHINED SURFACES
- ± 0.03 BETWEEN DOWELS IN SAME PLANE
- ± 0.13 TO SCREW HOLES, NON ACCUMULATIVE

INCH

- a 1 - STL PLT ASTM A-36 3/4 X B X B
- b 1 - STL TBG ASTM A-500 GRADE B 3 X 3 X 3/16 WT X LENGTH TO SUIT
- c 2 - HRS ASTM A-36 3/8 X 3 X dmm

METRIC

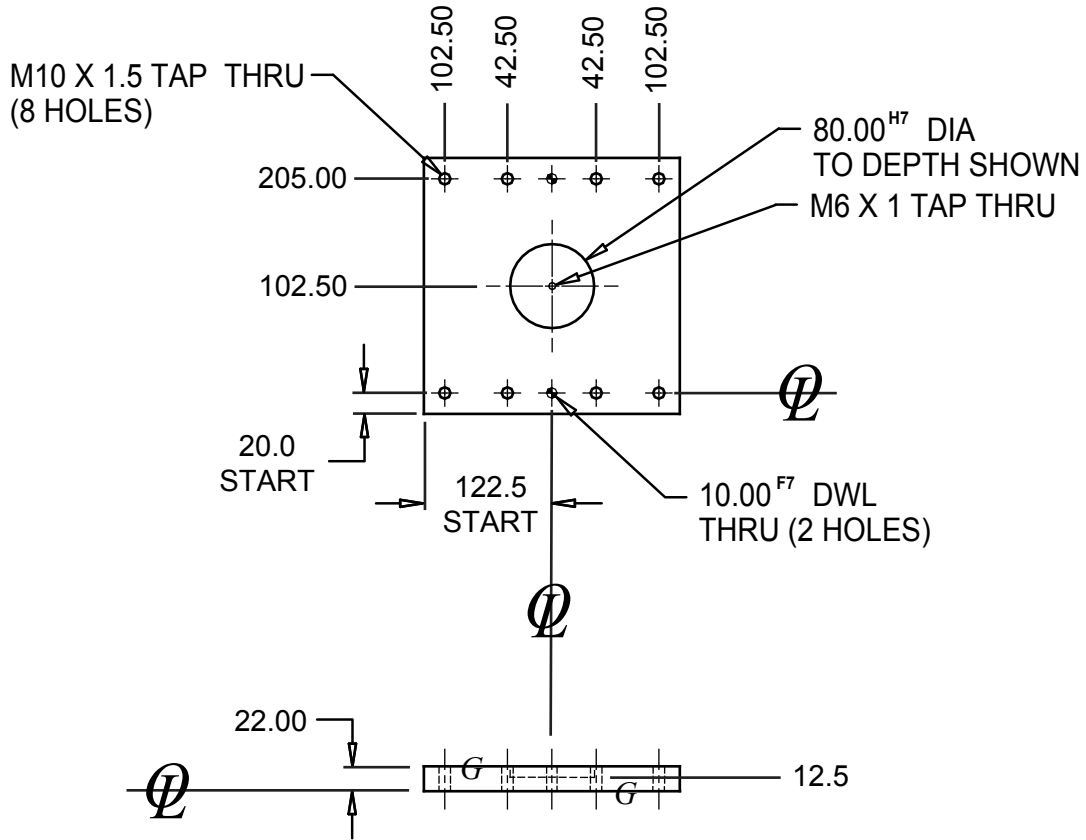
- a 1 - STL PLT ASTM A-36 20 X B X B
- b 1 - STL TBG ASTM A-500 GRADE B 75 X 75 X 4 WT X LENGTH TO SUIT
- c 2 - HRS ASTM A-36 10 X 75 X d

SEE PAGE B-1.1 FOR GLOBAL MATERIALS CHART

CAD STARTER MODEL ONLY - DO NOT ORDER AS NAAMS NUMBER - ASSIGN A CUSTOM NUMBER

NAAMS SERIES	AE21	AE22	AE23
Bolt Circle (mm)	125	160	200
A	84.5	102.0	122.0
B	245.0	280.0	320.0
C	205.00	240.00	280.00
D	102.50	120.00	140.00
E	42.50	60.00	70.00
F	122.5	140.0	160.0
d	65.0	80.0	100.0

**ROBOT ADAPTER PLATE
AEA001
FOR 125MM BOLT CIRCLE**



NOTES:

PAINT SPEC: PER END USER SPECIFICATIONS

TOLERANCES:

- 1 PLACE MACHINING ± 0.3
- 1 PLACE FABRICATION ± 1.5
- 2 PLACE ± 0.08 BETWEEN MACHINED SURFACES
- ± 0.03 BETWEEN DOWELS IN SAME PLANE
- ± 0.13 TO SCREW HOLES, NON ACCUMULATIVE

INCH

STL PLT ASTM A-36

1 X 245mm X 245mm

WEIGHT

10.0 kg

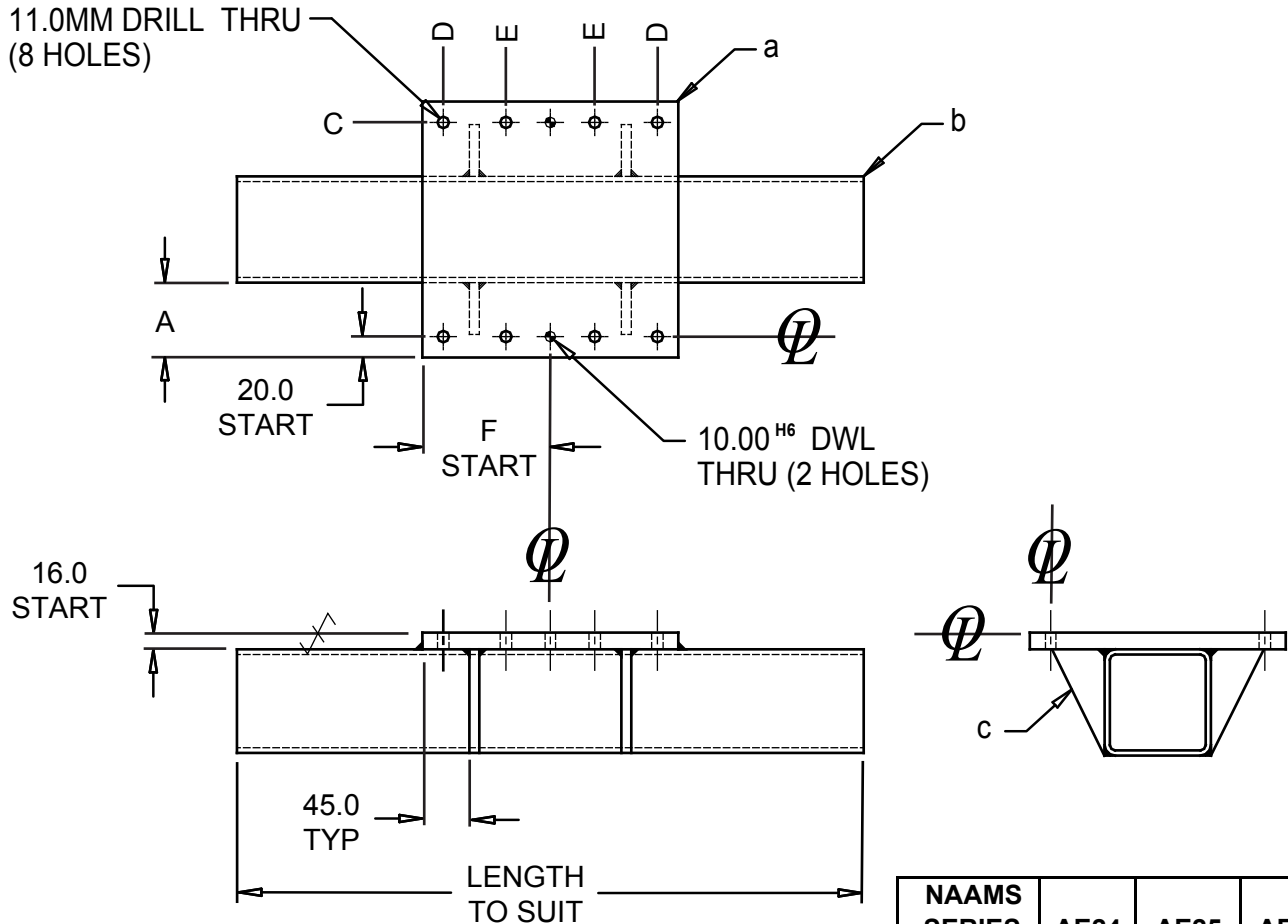
METRIC

STL PLT ASTM A-36

25 X 245 X 245

SEE PAGE B-1.1 FOR GLOBAL MATERIALS CHART

END EFFECTOR FRAME
CAD STARTER MODELS - ONLY
"I" SERIES
4 X 4 X 3/16 WT



NOTES: WELDED END CAPS TO SUIT

CONTINUOUS WELD UNLESS OTHERWISE SPECIFIED
 IN ACCORDANCE TO AWS D1.1

PAINT SPEC: PER END USER SPECIFICATIONS

STRESS RELIEVE

TOLERANCES:

- 1 PLACE MACHINING ± 0.3
- 1 PLACE FABRICATION ± 1.5
- 2 PLACE ± 0.08 BETWEEN MACHINED SURFACES
- ± 0.03 BETWEEN DOWELS IN SAME PLANE
- ± 0.13 TO SCREW HOLES, NON ACCUMULATIVE

INCH

- a 1 - STL PLT ASTM A-36 3/4 X B X B
- b 1 - STL TBG ASTM A-500 GRADE B 4 X 4 X 3/16 WT X LENGTH TO SUIT
- c 2 - HRS ASTM A-36 3/8 X 4 X dmm

METRIC

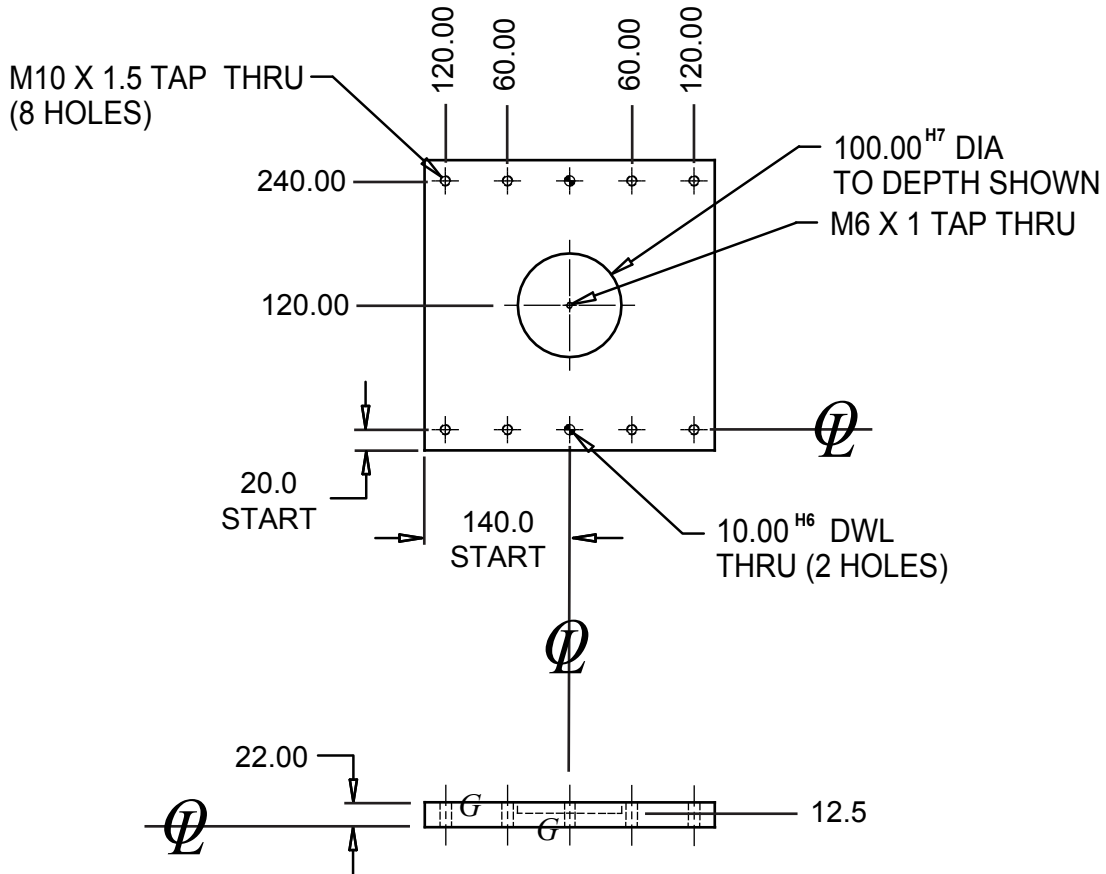
- a 1 - STL PLT ASTM A-36 20 X B X B
- b 1 - STL TBG ASTM A-500 GRADE B 100 X 100 X 4 WT X LENGTH TO SUIT
- c 2 - HRS ASTM A-36 10 X 100 X d

SEE PAGE B-1.1 FOR GLOBAL MATERIALS CHART

CAD STARTER MODEL ONLY - DO NOT ORDER AS NAAMS NUMBER - ASSIGN A CUSTOM NUMBER

NAAMS SERIES	AE24	AE25	AE26
Bolt Circle (mm)	125	160	200
A	71.5	89.0	110.0
B	245.0	280.0	320.0
C	205.00	240.00	280.00
D	102.50	120.00	140.00
E	42.50	60.00	70.00
F	122.5	140.0	160.0
d	50.0	70.0	90.0

**ROBOT ADAPTER PLATE
AEA002
FOR 160MM BOLT CIRCLE**



NOTES:

PAINT SPEC: PER END USER SPECIFICATIONS

TOLERANCES:

- 1 PLACE MACHINING ± 0.3
- 1 PLACE FABRICATION ± 1.5
- 2 PLACE ± 0.08 BETWEEN MACHINED SURFACES
- ± 0.03 BETWEEN DOWELS IN SAME PLANE
- ± 0.13 TO SCREW HOLES, NON ACCUMULATIVE

INCH

STL PLT ASTM A-36 1 X 280mm X 280mm

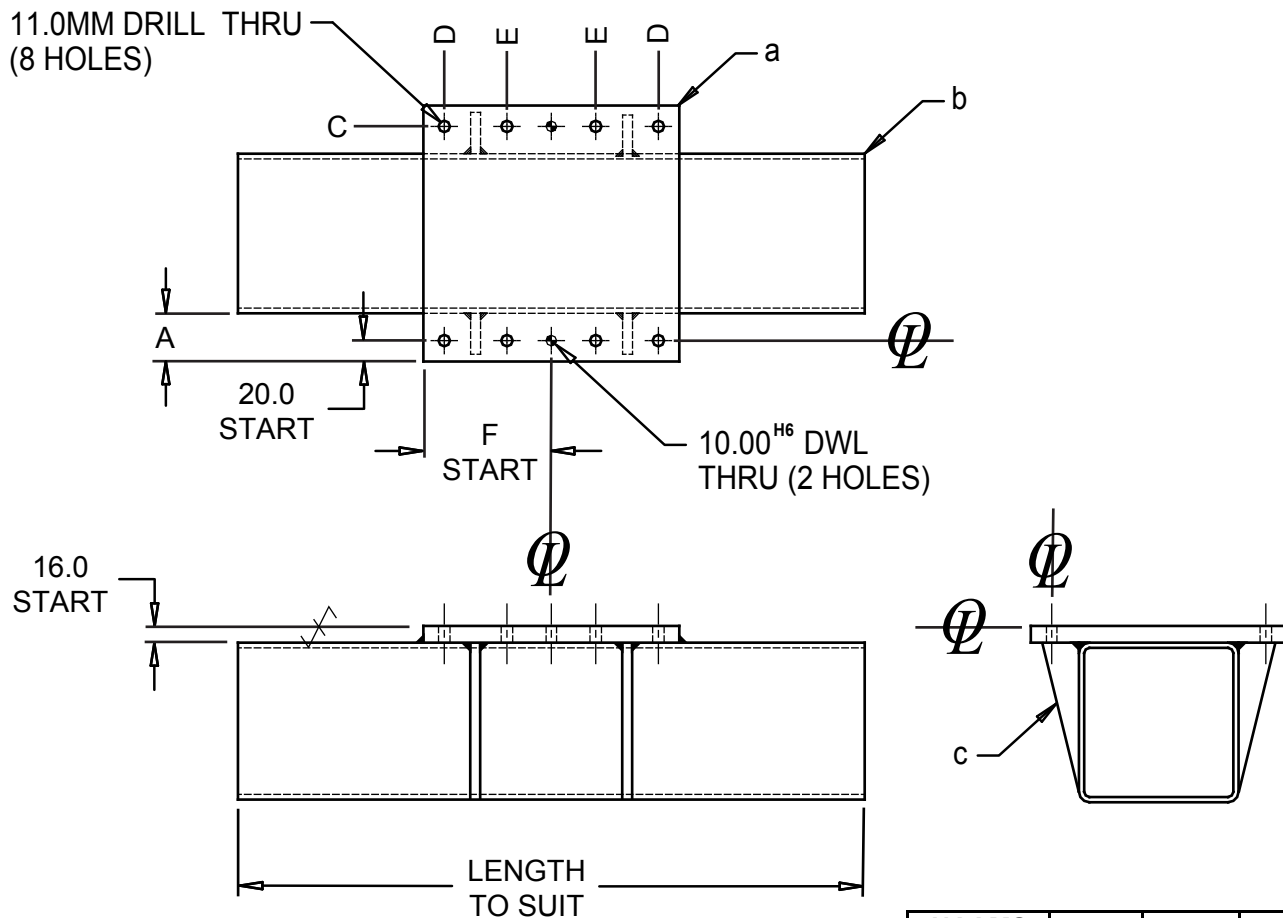
WEIGHT 13.0 kg

METRIC

STL PLT ASTM A-36 25 X 280 X 280

SEE PAGE B-1.1 FOR GLOBAL MATERIALS CHART

END EFFECTOR FRAME
CAD STARTER MODELS - ONLY
"I" SERIES
6 X 6 X 1/4 WT



NOTES: WELDED END CAPS TO SUIT

CONTINUOUS WELD UNLESS OTHERWISE SPECIFIED
 IN ACCORDANCE TO AWS D1.1

PAINT SPEC: PER END USER SPECIFICATIONS

STRESS RELIEVE

TOLERANCES:

- 1 PLACE MACHINING ± 0.3
- 1 PLACE FABRICATION ± 1.5
- 2 PLACE ± 0.08 BETWEEN MACHINED SURFACES
- ± 0.03 BETWEEN DOWELS IN SAME PLANE
- ± 0.13 TO SCREW HOLES, NON ACCUMULATIVE

INCH

- a 1 - STL PLT ASTM A-36 3/4 X B X B
- b 1 - STL TBG ASTM A-500 GRADE B 6 X 6 X 1/4 WT X LENGTH TO SUIT
- c 2 - HRS ASTM A-36 3/8 X 6 X dmm

METRIC

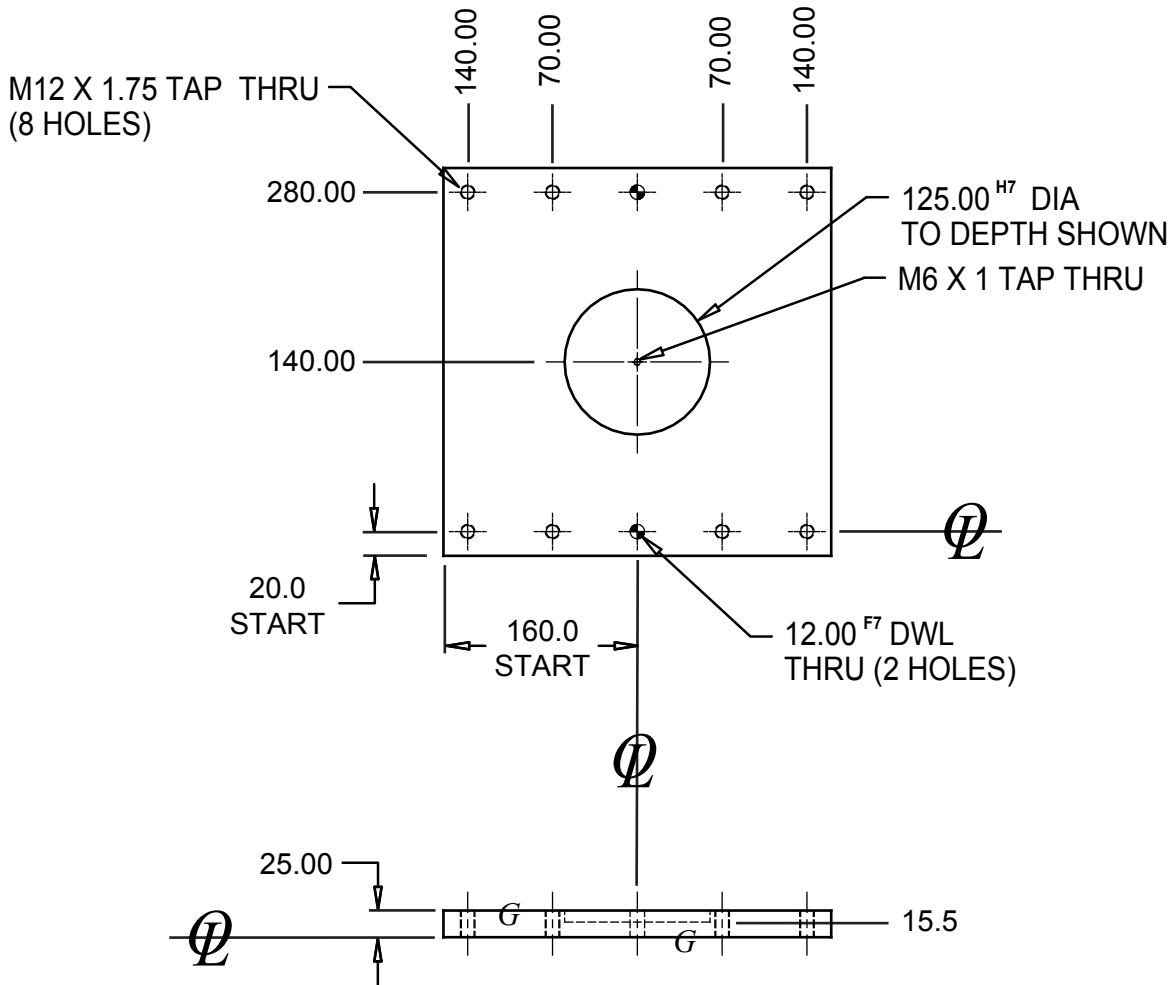
- a 1 - STL PLT ASTM A-36 20 X B X B
- b 1 - STL TBG ASTM A-500 GRADE B 160 X 160 X 6 WT X LENGTH TO SUIT
- c 2 - HRS ASTM A-36 10 X 150 X d

SEE PAGE B-1.1 FOR GLOBAL MATERIALS CHART

CAD STARTER MODEL ONLY - DO NOT ORDER AS NAAMS NUMBER - ASSIGN A CUSTOM NUMBER

NAAMS SERIES	AE27	AE28	AE29
Bolt Circle (mm)	125	160	200
A	46.5	64.0	84.0
B	245.0	280.0	320.0
C	205.00	240.00	280.00
D	102.50	120.00	140.00
E	42.50	60.00	70.00
F	122.5	140.0	160.0
d	N/A	40.0	60.0

**ROBOT ADAPTER PLATE
AEA003
FOR 200MM BOLT CIRCLE**



NOTES:

PAINT SPEC: PER END USER SPECIFICATIONS

TOLERANCES:

- 1 PLACE MACHINING ± 0.3
- 1 PLACE FABRICATION ± 1.5
- 2 PLACE ± 0.08 BETWEEN MACHINED SURFACES
- ± 0.03 BETWEEN DOWELS IN SAME PLANE
- ± 0.13 TO SCREW HOLES, NON ACCUMULATIVE

INCH

STL PLT ASTM A-36

1 1/4 X 320mm X 320mm

WEIGHT

19.2 kg

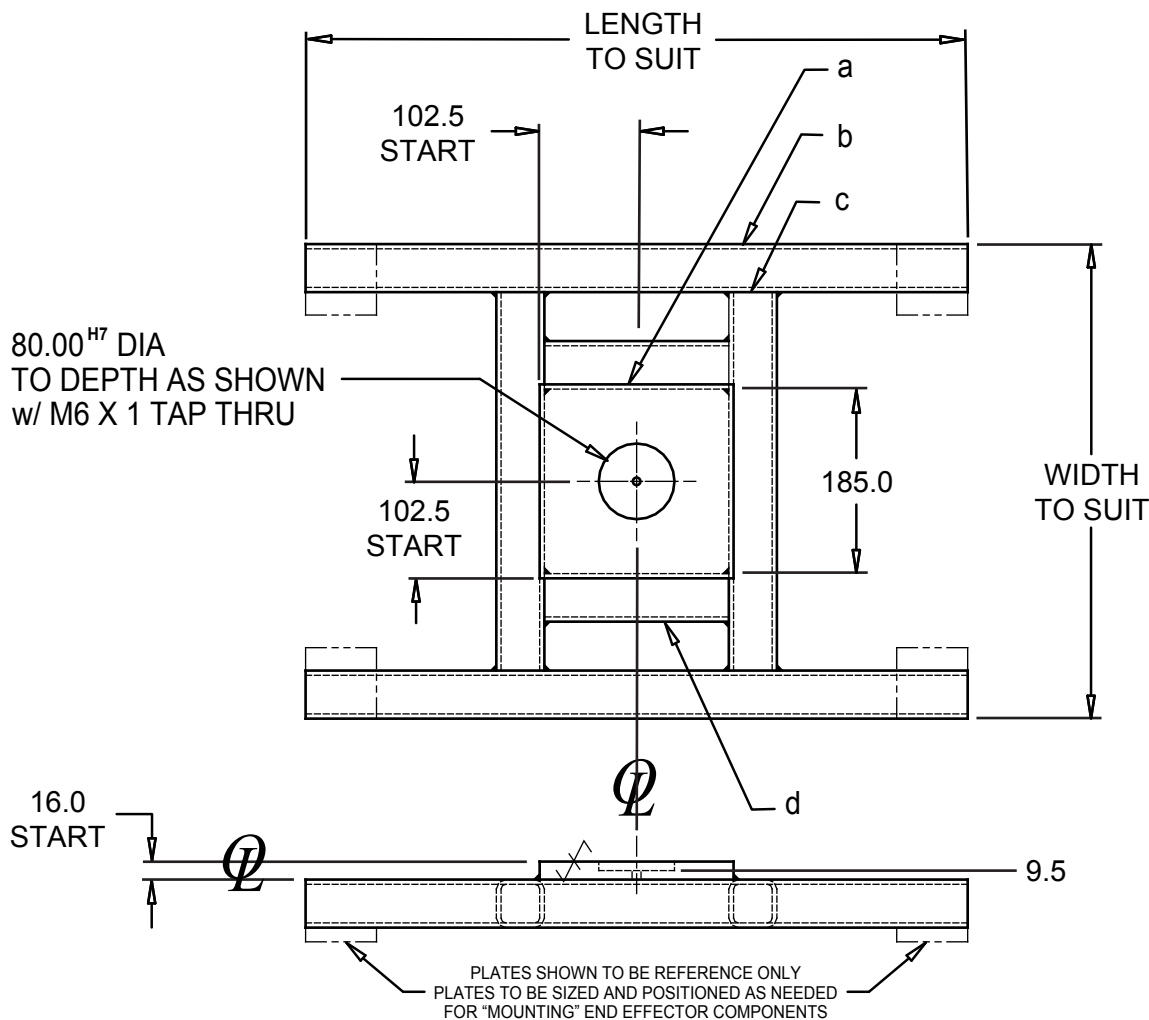
METRIC

STL PLT ASTM A-36

35 X 320 X 320

SEE PAGE B-1.1 FOR GLOBAL MATERIALS CHART

**END EFFECTOR FRAME
CAD STARTER MODELS - ONLY
"H" SERIES
125MM BOLT CIRCLE**



NOTES: WELDED END CAPS TO SUIT

THIS STANDARD IS FOR THE FRAME ONLY
THE "PLATE" OR "PLATES" WILL BE THE DETAIL
AND THE FRAME WILL BE A SUB DETAIL IN THE STOCK LIST

NAAMS SERIES	TUBE SIZE	
	A (INCH)	B (METRIC)
AE01	1 1/2 X 1 1/2 X 3/16 WT	40 X 40 X 4 WT
AE02	2 X 2 X 3/16 WT	50 X 50 X 4 WT
AE03	3 X 2 X 3/16 WT	75 X 50 X 4 WT
AE04	3 X 3 X 3/16 WT	75 X 75 X 4 WT
AE05	4 X 4 X 3/16 WT	100 X 100 X 4 WT

INCH

- a 1 - STL PLT ASTM A-36 3/4 X 205.0mm X 205.0mm
- b 2 - STL TBG ASTM A-500 GRADE B A X LENGTH TO SUIT
- c 2 - STL TBG ASTM A-500 GRADE B A X LENGTH TO SUIT
- d 2 - STL TBG ASTM A-500 GRADE B A X 185.0mm

CONTINUOUS WELD UNLESS OTHERWISE SPECIFIED
IN ACCORDANCE TO AWS D1.1

PAINT SPEC: PER END USER SPECIFICATIONS

METRIC

- a 1 - STL PLT ASTM A-36 20.0 X 205.0 X 205.0
- b 2 - STL TBG ASTM A-500 GRADE B B X LENGTH TO SUIT
- c 2 - STL TBG ASTM A-500 GRADE B B X LENGTH TO SUIT
- d 2 - STL TBG ASTM A-500 GRADE B B X 185.0

STRESS RELIEVE

TOLERANCES:
1 PLACE MACHINING ±0.3
1 PLACE FABRICATION ±1.5
2 PLACE ±0.08 BETWEEN MACHINED SURFACES
±0.03 BETWEEN DOWELS IN SAME PLANE
±0.13 TO SCREW HOLES, NON ACCUMULATIVE

SEE PAGE B-1.1 FOR GLOBAL MATERIALS CHART

CAD STARTER MODEL ONLY - DO NOT ORDER AS NAAMS NUMBER - ASSIGN A CUSTOM NUMBER

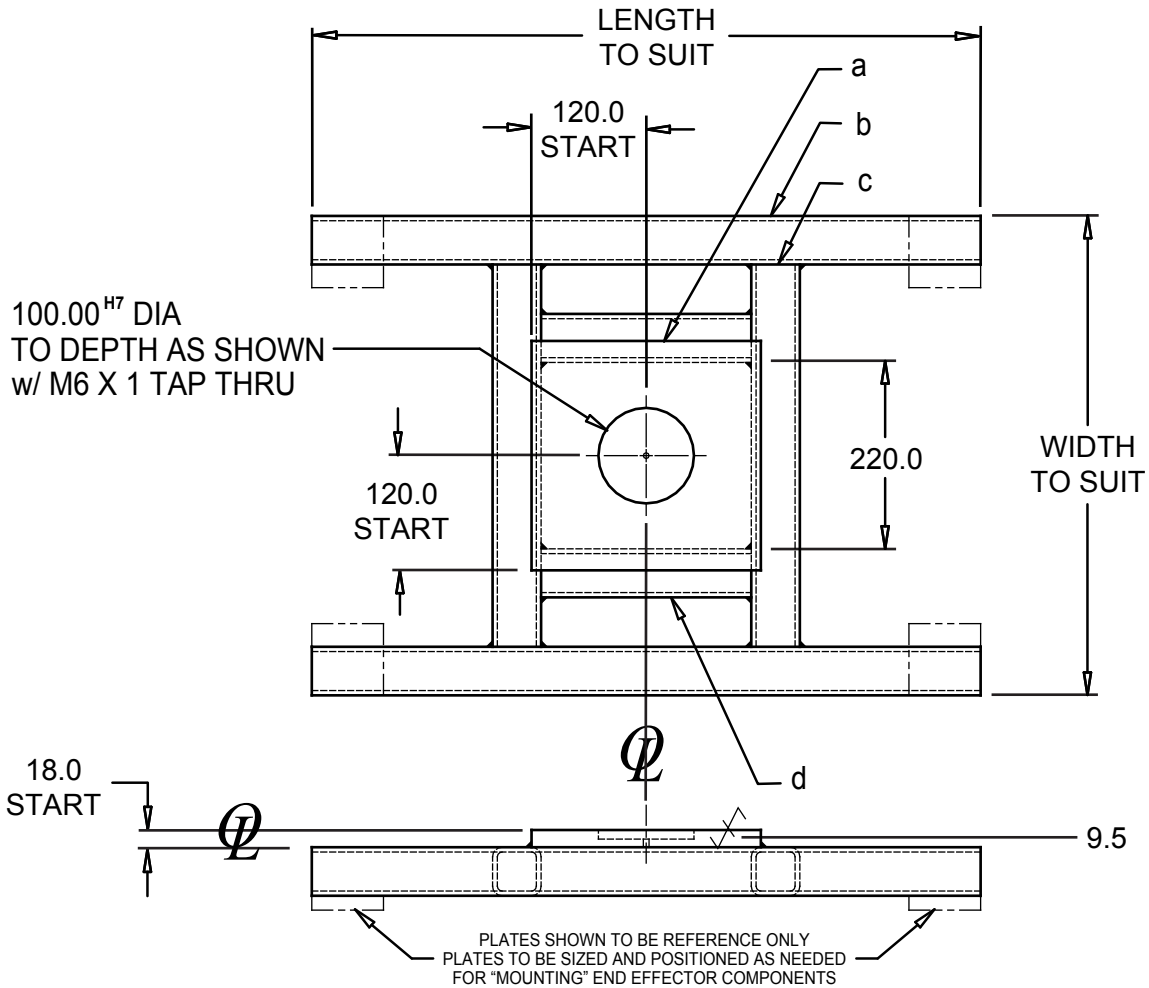
**END EFFECTOR FRAME
CAD STARTER MODELS - ONLY
"H" SERIES
160MM BOLT CIRCLE**

GLOBAL STANDARD COMPONENTS



Assembly

02/06/08



NOTES: WELDED END CAPS TO SUIT

THIS STANDARD IS FOR THE FRAME ONLY
THE "PLATE" OR "PLATES" WILL BE THE DETAIL
AND THE FRAME WILL BE A SUB DETAIL IN THE STOCK LIST

NAAMS SERIES	TUBE SIZE	
	A (INCH)	B (METRIC)
AE06	1 1/2 X 1 1/2 X 3/16 WT	40 X 40 X 4 WT
AE07	2 X 2 X 3/16 WT	50 X 50 X 4 WT
AE08	3 X 2 X 3/16 WT	75 X 50 X 4 WT
AE09	3 X 3 X 3/16 WT	75 X 75 X 4 WT
AE10	4 X 4 X 3/16 WT	100 X 100 X 4 WT

INCH

- a 1 - STL PLT ASTM A-36 7/8 X 240.0mm X 240.0mm
- b 2 - STL TBG ASTM A-500 GRADE B A X LENGTH TO SUIT
- c 2 - STL TBG ASTM A-500 GRADE B A X LENGTH TO SUIT
- d 2 - STL TBG ASTM A-500 GRADE B A X 220.0mm

CONTINUOUS WELD UNLESS OTHERWISE SPECIFIED
IN ACCORDANCE TO AWS D1.1

PAINT SPEC: PER END USER SPECIFICATIONS

STRESS RELIEVE

METRIC

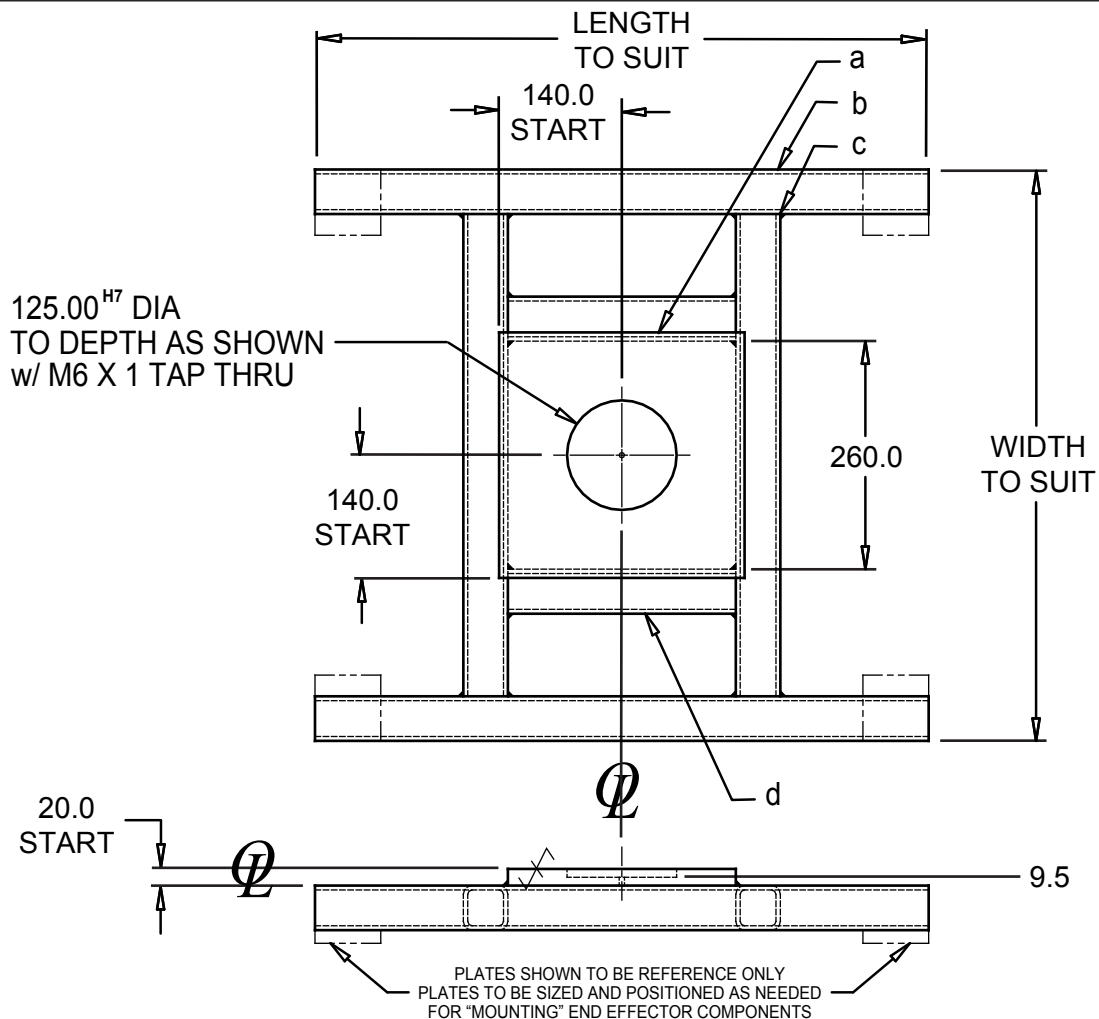
- a 1 - STL PLT ASTM A-36 22.0 X 240.0 X 240.0
- b 2 - STL TBG ASTM A-500 GRADE B B X LENGTH TO SUIT
- c 2 - STL TBG ASTM A-500 GRADE B B X LENGTH TO SUIT
- d 2 - STL TBG ASTM A-500 GRADE B B X 220.0

TOLERANCES:
1 PLACE MACHINING ±0.3
1 PLACE FABRICATION ±1.5
2 PLACE ±0.08 BETWEEN MACHINED SURFACES
±0.03 BETWEEN DOWELS IN SAME PLANE
±0.13 TO SCREW HOLES, NON ACCUMULATIVE

SEE PAGE B-1.1 FOR GLOBAL MATERIALS CHART

CAD STARTER MODEL ONLY - DO NOT ORDER AS NAAMS NUMBER - ASSIGN A CUSTOM NUMBER

**END EFFECTOR FRAME
CAD STARTER MODELS - ONLY
"H" SERIES
200MM BOLT CIRCLE**



NOTES: WELDED END CAPS TO SUIT

THIS STANDARD IS FOR THE FRAME ONLY
THE "PLATE" OR "PLATES" WILL BE THE DETAIL
AND THE FRAME WILL BE A SUB DETAIL IN THE STOCK LIST

NAAMS SERIES	TUBE SIZE	
	A (INCH)	B (METRIC)
AE11	1 1/2 X 1 1/2 X 3/16 WT	40 X 40 X 4 WT
AE12	2 X 2 X 3/16 WT	50 X 50 X 4 WT
AE13	3 X 2 X 3/16 WT	75 X 50 X 4 WT
AE14	3 X 3 X 3/16 WT	75 X 75 X 4 WT
AE15	4 X 4 X 3/16 WT	100 X 100 X 4 WT

INCH

- a 1 - STL PLT ASTM A-36 1 X 280.0mm X 280.0mm
- b 2 - STL TBG ASTM A-500 GRADE B A X LENGTH TO SUIT
- c 2 - STL TBG ASTM A-500 GRADE B A X LENGTH TO SUIT
- d 2 - STL TBG ASTM A-500 GRADE B A X 260.0mm

METRIC

- a 1 - STL PLT ASTM A-36 25.0 X 280.0 X 280.0
- b 2 - STL TBG ASTM A-500 GRADE B B X LENGTH TO SUIT
- c 2 - STL TBG ASTM A-500 GRADE B B X LENGTH TO SUIT
- d 2 - STL TBG ASTM A-500 GRADE B B X 260.0

CONTINUOUS WELD UNLESS OTHERWISE SPECIFIED
IN ACCORDANCE TO AWS D1.1

PAINT SPEC: PER END USER SPECIFICATIONS

STRESS RELIEVE

TOLERANCES:
1 PLACE MACHINING ±0.3
1 PLACE FABRICATION ±1.5
2 PLACE ±0.08 BETWEEN MACHINED SURFACES
±0.03 BETWEEN DOWELS IN SAME PLANE
±0.13 TO SCREW HOLES, NON ACCUMULATIVE

SEE PAGE B-1.1 FOR GLOBAL MATERIALS CHART

CAD STARTER MODEL ONLY - DO NOT ORDER AS NAAMS NUMBER - ASSIGN A CUSTOM NUMBER