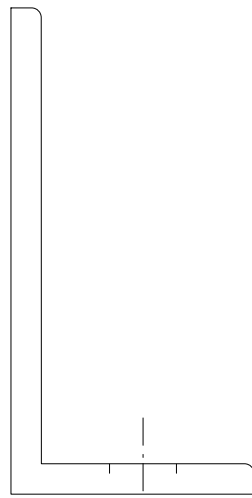
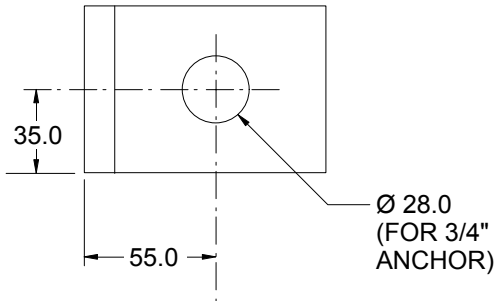


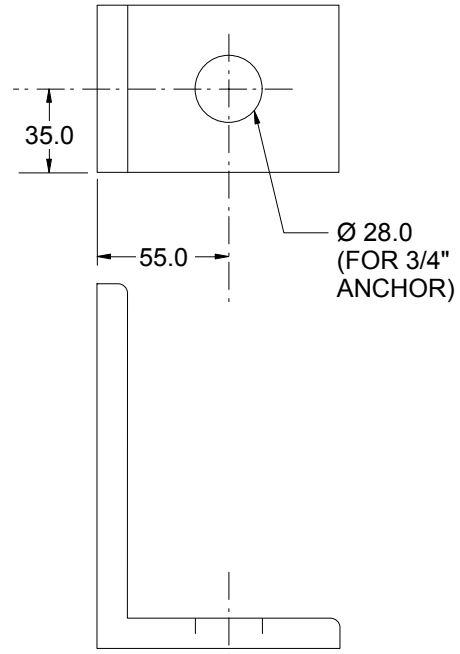
# ANCHOR ANGLES

TOLERANCE:  
 1 PLACE FABRICATION  $\pm 1.5\text{MM}$



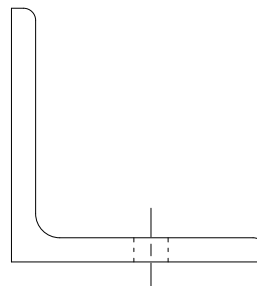
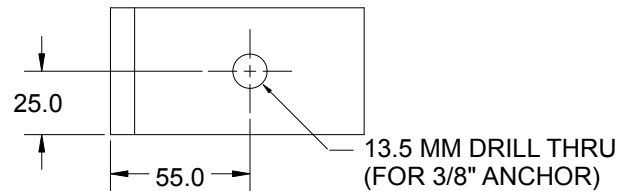
**ABL843**

MATERIAL: STL. ANGLE ASTM A-36  
 8" X 4" X 1/2" X 70.0 mm LONG  
 WEIGHT: 1.81kg



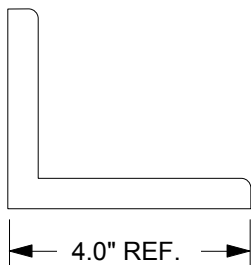
**ABL643**

MATERIAL: STL. ANGLE ASTM A-36  
 6" X 4" X 1/2" X 70.0 mm LONG  
 WEIGHT: 1.59kg



**ABL443**

MATERIAL: STL. ANGLE ASTM A-36  
 4" X 4" X 3/8" X 50.0 mm LONG  
 or 100mm X 100mm X 10mm X 50 mm LONG  
 WEIGHT: 0.7kg



**ABL343**

MATERIAL: STL. ANGLE ASTM A-36  
 4" X 3" X 1/2" X 75.0 mm LONG  
 WEIGHT: 1.36kg

C

B

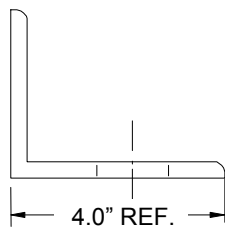
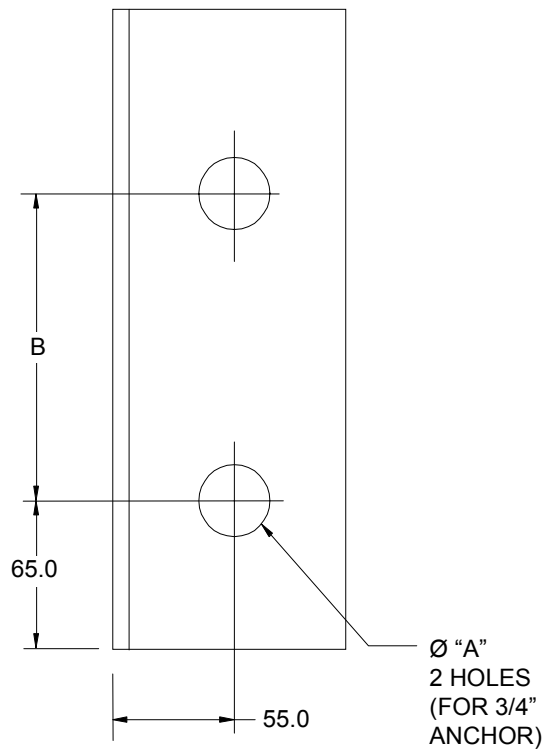
D

A

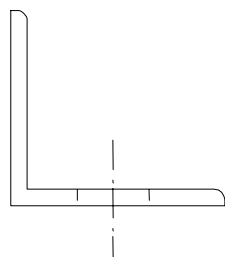
E

SEE PAGE B-1.1 FOR GLOBAL MATERIALS CHART

# ANCHOR ANGLES



**ABL340, ABL341**  
 MATERIAL: STL. ANG. ASTM A-36  
 4" X 3" X 1/2" X C LONG  
 or 100mm X 100mm X 12mm X C LONG



**ABL440, ABL441**  
 MATERIAL: STL. ANG. ASTM A-36  
 4" X 4" X 1/2" X C LONG  
 or 100mm X 100mm X 12mm X C LONG

NAAMS CODE	A	B	C	STOCK / WEIGHT (kg)	
				INCH	METRIC
ABL340	25.0	260.0	390.0	6.4	6.8
ABL341	21.0	120.0	250.0	4.1	4.4
ABL440	25.0	260.0	390.0	7.4	6.8
ABL441	21.0	120.0	250.0	4.7	4.4

B

C

D

A

D

SEE PAGE B-1.1 FOR GLOBAL MATERIALS CHART