

METRIC FITTING SPACERS SHORT SLOT (SMALL)

GLOBAL STANDARD COMPONENTS



Assembly

08/24/07

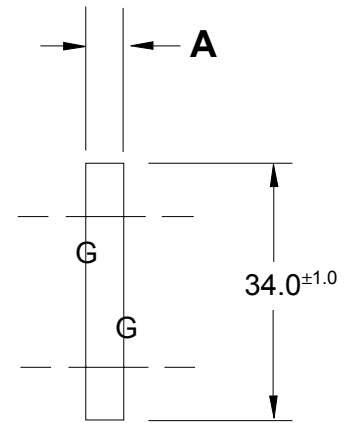
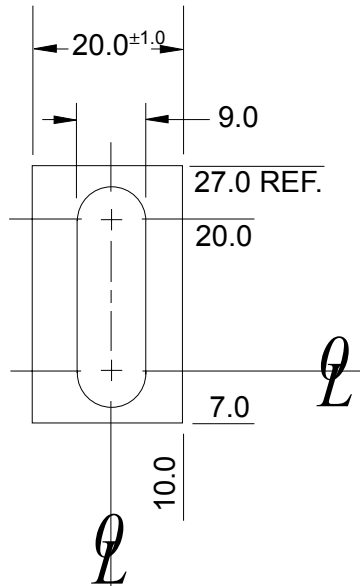
NOTE:

- 1.) ELECTROETCH DIM A ON EDGE OF SPACER
- 2.) ALL DIMENSIONS ARE METRIC
- 3.) BLACK OXIDE FINISH
- 4.) SURFACES TO BE FLAT AND PARALLEL TO WITHIN 0.015 mm T.I.R.
- 5.) METRIC TOLERANCES: UNLESS OTHERWISE SPECIFIED:

- 1 PLACE ± 0.3 mm
- 2 PLACE ± 0.03 mm

MATERIAL: S.A.E. 1020 HRS

SEE PAGE B-1.1 FOR GLOBAL MATERIALS CHART



A

| NAAMS CODE | A |
|------------|------|
| ASP330S | 3.00 |
| ASP332S | 3.20 |
| ASP334S | 3.40 |
| ASP336S | 3.60 |
| ASP338S | 3.80 |
| ASP340S | 4.00 |
| ASP342S | 4.20 |
| ASP344S | 4.40 |
| ASP346S | 4.60 |
| ASP348S | 4.80 |
| ASP350S | 5.00 |
| ASP352S | 5.20 |
| ASP354S | 5.40 |
| ASP356S | 5.60 |
| ASP358S | 5.80 |
| ASP360S | 6.00 |
| ASP362S | 6.20 |
| ASP364S | 6.40 |
| ASP366S | 6.60 |
| ASP368S | 6.80 |
| ASP370S | 7.00 |