

Lateral Plungers with plastic spring and pin - INCH

2B150.0411



Product Description

To be used for positioning and applying pressure, e.g. during painting and sandblasting.

Material

Body

- Aluminium

Spring

- Plastic

Pin

- Thermoplastic POM, white

Assembly

Installation by pressing in.

Formula for calculating the center distance for the mounting hole:

$$l_0 = z/2 + w + x,$$

l_0 = center distance,

y = workpiece height,

w = workpiece length,

x = coordinate dimension,

s = stroke,

z = stop diameter

Calculation dimension x :

y greater than or equal to $l_2 - d_2/2$, then $x =$

$$d_2/2 - s$$

or

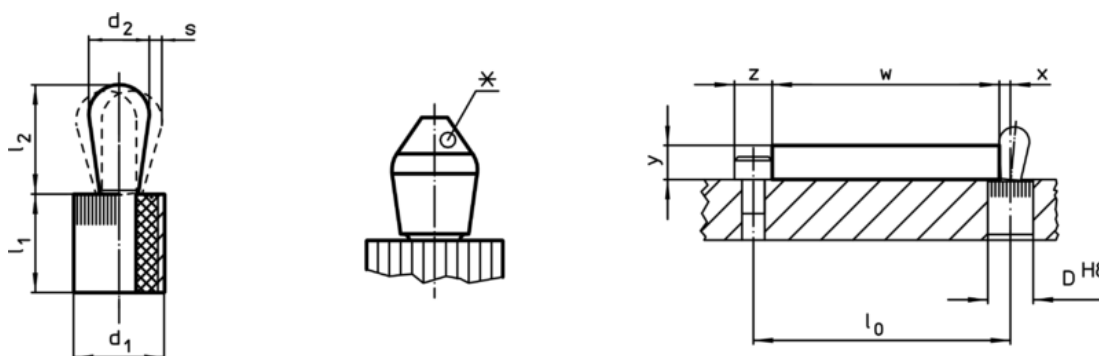
y smaller than $l_2 - d_2/2$, then $x =$

$$d_2/2 - s - [(l_2 - d_2/2 - y) * 0,123]$$

Characteristic

Standard spring load = red spring

Drawing



*some sizes (see chart) have a deviating pin shape


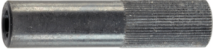
Order information

Dimensions		Spring load F max. ¹⁾ ~ [lb]	Dimensions		Stroke s [inch]	Location hole D H8 [inch]	max. [°F]	oz	Art. No. ²⁾
d ₁	d ₂		l ₁	l ₂					
			-0,03	±0,02					
[inch]			[inch]						
Pin: Thermoplastic/standard spring load									
1/4	0,118	4,4	0,295	0,145	0,016	0,25	176	0,012	2B150.0411

¹⁾ statistical average value

²⁾ deviating pin shape (see drawing)

Accessories

	Dimensions d ₁ [inch]	 [oz]	Art. No.
assembly tool			
	1/4	0,678	22150.0830