

Lateral Plungers with plastic spring and pin - INCH

2B150.0310



Product Description

To be used for positioning and applying pressure, e.g. during painting and sandblasting.

Material

- Body**
- Aluminium
- Spring**
- Plastic
- Pin**
- Stainless steel

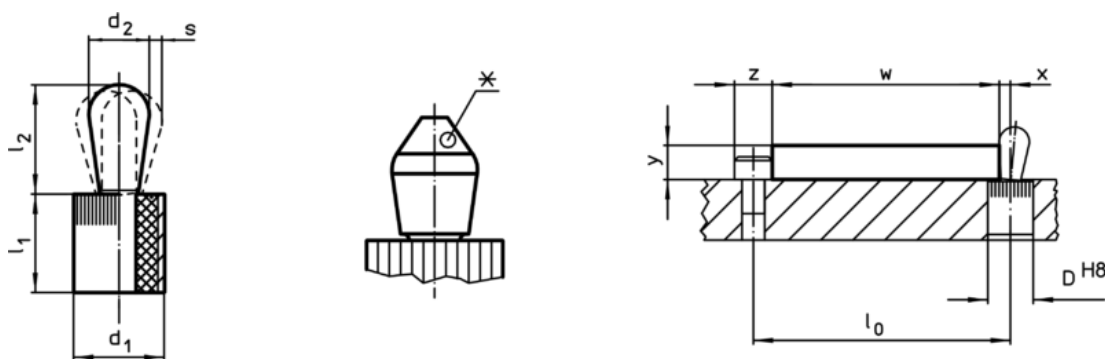
Assembly

Installation by pressing in.
Formula for calculating the center distance for the mounting hole:
 $l_0 = z/2 + w + x$,
 l_0 = center distance,
 y = workpiece height,
 w = workpiece length,
 x = coordinate dimension,
 s = stroke,
 z = stop diameter
Calculation dimension x :
 y greater than or equal to $l_2 - d_2/2$, then $x = d_2/2 - s$
or
 y smaller than $l_2 - d_2/2$, then $x = d_2/2 - s - [(l_2 - d_2/2 - y) * 0,123]$

Characteristic

Light spring load = blue spring

Drawing



*some sizes (see chart) have a deviating pin shape


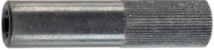
Order information

| Dimensions | | Spring load F max. ¹⁾ ~ [lb] | Dimensions | | Stroke s [inch] | Location hole D H8 [inch] | max. [°F] | oz | Art. No. ²⁾ |
|----------------|----------------|---|----------------|----------------|-----------------------|---------------------------------------|--------------|-------|------------------------|
| d ₁ | d ₂ | | l ₁ | l ₂ | | | | | |
| [inch] | | | [inch] | | | | | | |
| 1/4 | 0,118 | 2,2 | 0,295 | 0,145 | 0,016 | 0,25 | 212 | 0,021 | 2B150.0310 |

¹⁾ statistical average value

²⁾ deviating pin shape (see drawing)

Accessories

| | Dimensions d ₁ [inch] |  [oz] | Art. No. |
|---|--|---|------------|
| assembly tool | | | |
|  | 1/4 | 0,678 | 22150.0830 |