

## Height Adjusting Elements- high

25120.0112



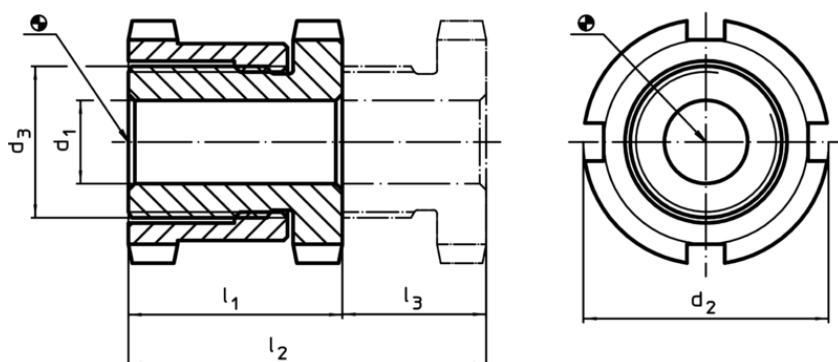
### Product Description

For levelling of machines and installations.  
For vertical adjustment, the self-locking height adjusting elements are fitted with a fine-pitch thread. All elements have a throughgoing bore for fastening purposes. A turn-out lock serves as height limit for the maximum adjustment height.


### Material

- Heat-treated steel, zinc-plated by galvanization, chromalized


### Drawing



### Order information

d <sub>1</sub>	d <sub>2</sub>	Dimensions d <sub>3</sub> [mm]	l <sub>1</sub> ~	l <sub>2</sub> ~	Stroke l <sub>3</sub> ~ [mm]	For screw [mm]	Load capacity for static load max. [kN]	Carrying force max. [kN]	 [g]	Art. No.
6,6	32	M20 x 1	35	55	20	M6	65	55,7	161	25120.0112

### Accessories

For height adjusting element size d <sub>2</sub> [mm]	Dimensions of sickle spanner DIN 1810, form A [mm]	 [g]	Art. No.
<b>Sickle spanner for vertical adjustment</b> 32	30 – 32	46	25120.0982

### Application example

