

Height Adjusting Elements

25120.0012



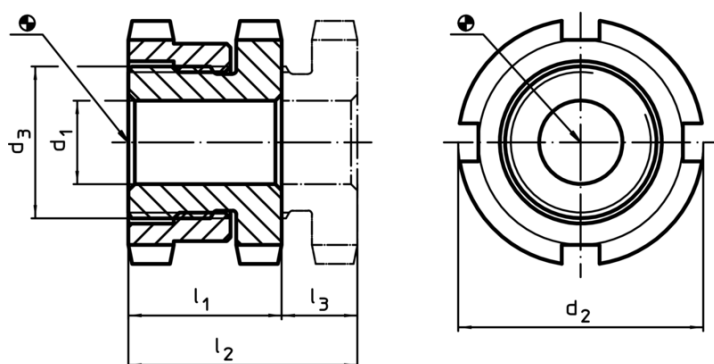
Product Description

For levelling of machines and installations.
For vertical adjustment, the self-locking height adjusting elements are fitted with a fine-pitch thread. All elements have a throughgoing bore for fastening purposes. A turn-out lock serves as height limit for the maximum adjustment height.


Material

- Heat-treated steel, zinc-plated by galvanization, chromalized


Drawing



Order information

| d ₁ | d ₂ | Dimensions d ₃ [mm] | l ₁ ~ | l ₂ ~ | Stroke l ₃ ~ [mm] | For screw [mm] | Load capacity for static load max. [kN] | Carrying force max. [kN] |  [g] | Art. No. |
|----------------|----------------|--------------------------------------|---------------------|---------------------|---------------------------------------|-------------------|--|--------------------------------|---|------------|
| 6,6 | 32 | M20 x 1 | 18 | 23 | 5 | M6 | 65 | 55,7 | 95 | 25120.0012 |

Accessories

| For height adjusting element size d ₂ [mm] | Dimensions of sickle spanner DIN 1810, form A [mm] |  [g] | Art. No. |
|---|---|---|------------|
| Sickle spanner for vertical adjustment | | | |
| 32 | 30 – 32 | 46 | 25120.0982 |

Application example

