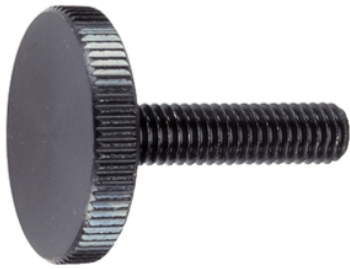


Flat Knurled Thumb Screws· DIN 653

24770.0180



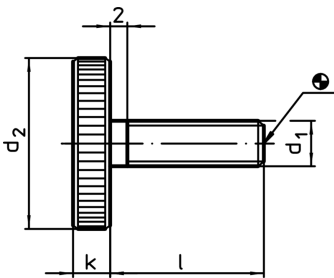
Product Description

All knurled screws are one-piece manufactured with thread up to the head (DIN-designation A).

Material

- Steel, blackened, quality 5.8

Drawing



Order information

d ₁	Dimensions			[g]	Art. No.
	l [mm]	d ₂	k		
Steel					
M10	40	36	8	80	24770.0180