

Flat Knurled Thumb Screws· DIN 653

24770.0176



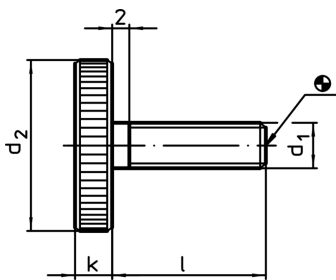
Product Description

All knurled screws are one-piece manufactured with thread up to the head (DIN-designation A).

Material

- Steel, blackened, quality 5.8

Drawing



Order information

| d ₁ | Dimensions | | | [g] | Art. No. |
|----------------|------------|----------------|---|-----|------------|
| | l [mm] | d ₂ | k | | |
| Steel | | | | | |
| M10 | 30 | 36 | 8 | 76 | 24770.0176 |