

## Flat Knurled Thumb Screws· DIN 653

24770.0158



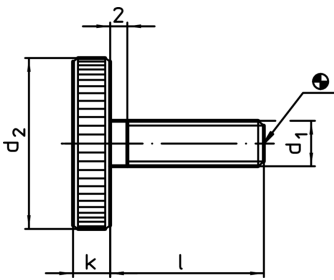
### Product Description

All knurled screws are one-piece manufactured with thread up to the head (DIN-designation A).

### Material

- Steel, blackened, quality 5.8

### Drawing



### Order information

Dimensions		[mm]	[g]	Art. No.
d <sub>1</sub>	l			
<b>Steel</b>				
M8	30	30	6	40
				<b>24770.0158</b>