

Flat Knurled Thumb Screws· DIN 653

24770.0154



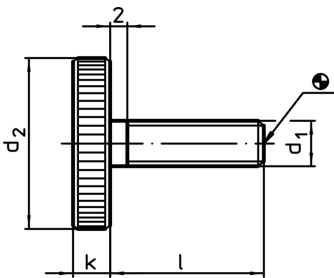
Product Description

All knurled screws are one-piece manufactured with thread up to the head (DIN-designation A).

Material

- Steel, blackened, quality 5.8

Drawing



Order information

Dimensions		Art. No.			
d_1	l [mm]		d_2	k	[g]
Steel					
M8	20	30	6	37	24770.0154