

## Flat Knurled Thumb Screws· DIN 653

24770.0138



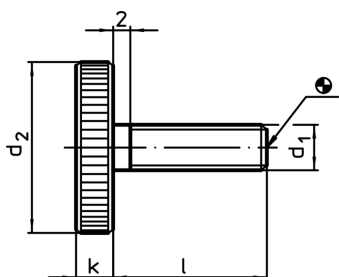
### Product Description

All knurled screws are one-piece manufactured with thread up to the head (DIN-designation A).


### Material

- Steel, blackened, quality 5.8

### Drawing



### Order information

d <sub>1</sub>		Dimensions [mm]		d <sub>2</sub>	k	 [g]	Art. No.
Steel							
M6	25	24	5	20	24770.0138		