

Flat Knurled Thumb Screws• DIN 653

24770.0079



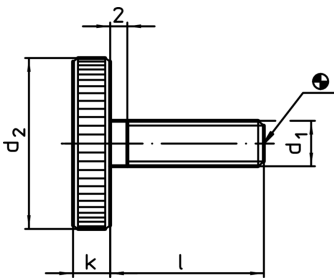
Product Description

All knurled screws are one-piece manufactured with thread up to the head (DIN-designation A).

Material

- Steel, blackened, quality 5.8

Drawing



Order information

Dimensions				Art. No.		
d_1	l	d_2	k			
[mm]				[g]		
Steel	M3	20	12	2,5	2,9	24770.0079