

Flat Knurled Thumb Screws• DIN 653

24770.0072



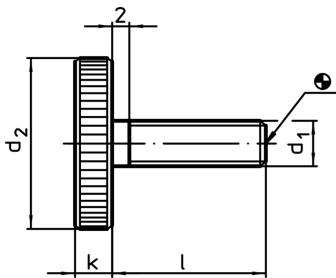
Product Description

All knurled screws are one-piece manufactured with thread up to the head (DIN-designation A).


Material

- Steel, blackened, quality 5.8

Drawing



Order information

Dimensions					Art. No.
d ₁	l	d ₂	k		
[mm]					
Steel					
M3	6	12	2,5	2,3	24770.0072