

Cylindrical Handles · rotating
24530.0008

Product Description



Material

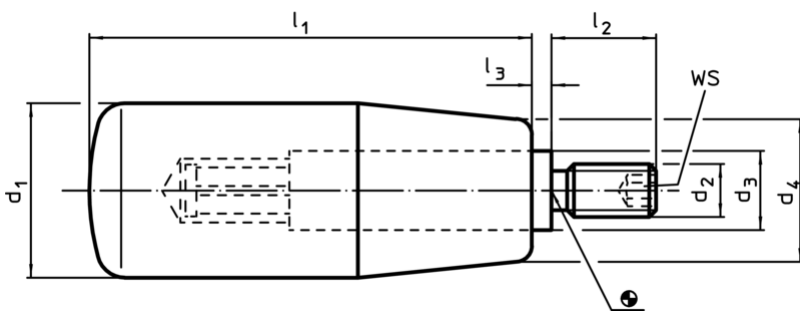
Axle part

- Steel, zinc-plated by galvanization

Cylindrical handle

- Thermoplastic PA, black, dull

Drawing



Order information

Dimensions							WS	🌡️ max. [°C]	📦 [g]	Art. No.
d ₁	d ₂	d ₃	d ₄	l ₁	l ₂	l ₃	[mm]	[°C]	[g]	
Thermoplastic, Steel										
14	M6	8	11	28	10	0,5	3	80	13	24530.0008

Application example

