

## Tommy Screws• DIN 6304 with fixed pin

### 24490.0016



#### Product Description

With this version, the pin is pressed in.

#### Material

- Free cutting steel, blackened, pressure lug hardened.

#### More information

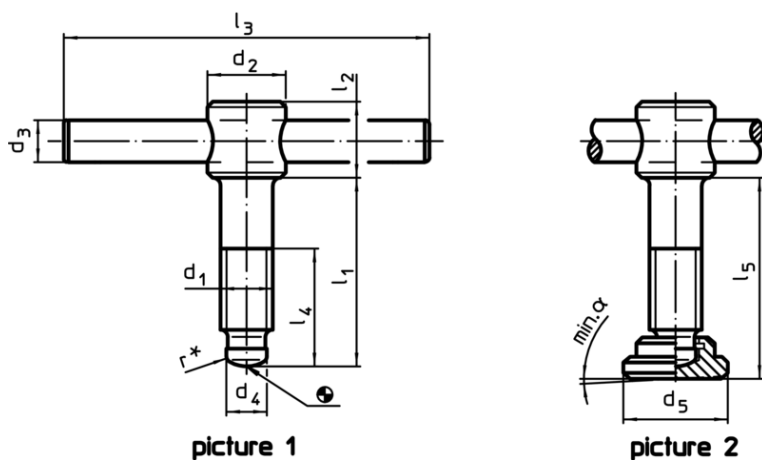
#### References

Thrust point for thrust pad DIN 6311 form S, EH 22560.

#### Further products


- Thrust Pads, DIN 6311 and low model

#### Drawing



\* to ease assembly the DIN 6304 specification has been completed by r

#### Order information

Dimensions									Art. No.
d <sub>1</sub>	l <sub>1</sub>	d <sub>2</sub>	d <sub>3</sub>	d <sub>4</sub>	l <sub>2</sub>	l <sub>3</sub>	l <sub>4</sub>		
[mm]								[g]	
without thrust pad, form E – picture 1									
M16	75	24	12	12	20	120	55	248	24490.0016