

Tommy Screws· DIN 6304 with fixed pin

24490.0008



Product Description

With this version, the pin is pressed in.

Material

- Free cutting steel, blackened, pressure lug hardened.

More information

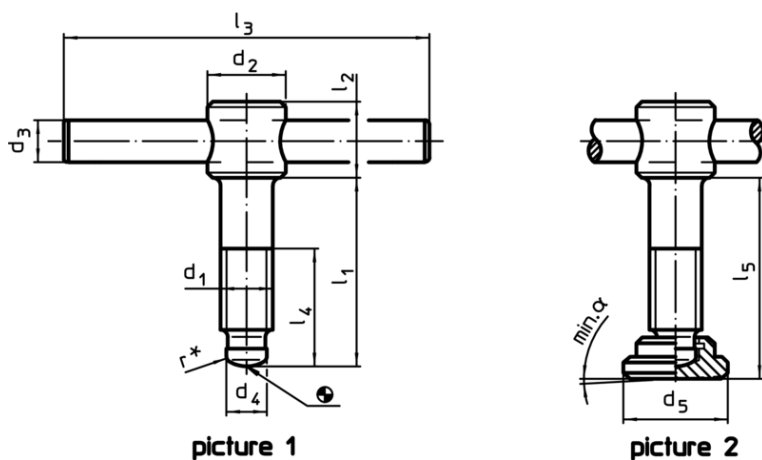
References

Thrust point for thrust pad DIN 6311 form S, EH 22560.

Further products

- Thrust Pads, DIN 6311 and low model

Drawing



* to ease assembly the DIN 6304 specification has been completed by r

Order information

Dimensions							[g]	Art. No.	
d ₁	l ₁	d ₂	d ₃	d ₄	l ₂	l ₃			l ₄
[mm]									
without thrust pad, form E – picture 1									
M8	50	14	6	6	12	60	35	39	24490.0008