

Clamping Nuts • welded, double-sided

24470.0710

Product Description

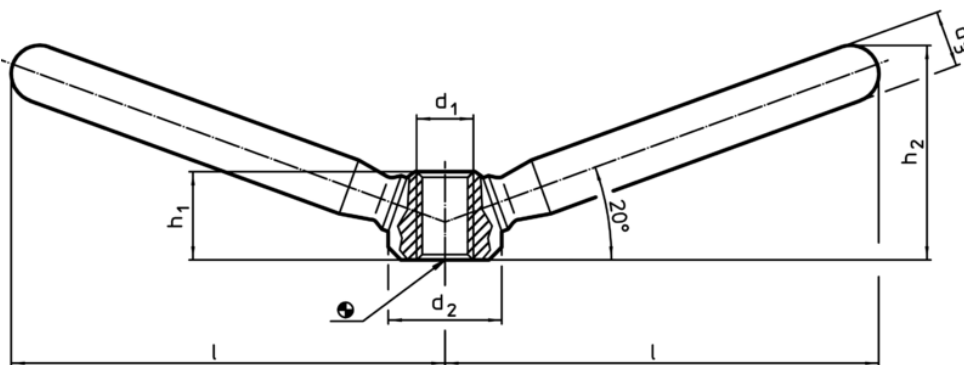
Allows for two-handed operating.

Material

- Steel, zinc-plated by galvanization



Drawing



Order information

l	d ₁	Dimensions			h ₁	h ₂	[g]	Art. No.
		d ₂	d ₃	[mm]				
Steel								
75,5	M12	25	14	19	40	210	24470.0710	

Application example

