

Compact Clamps

23690.0016



Product Description

The compact clamps are all purpose clamping elements. Due to the self-locking clamping lever application can either take place in horizontal or vertical position in both, machined and raw workpieces.

Features:

- exact and position precise clamping
- ease of operation
- high clamping force at low tightening torques, abrasion-resistant due to clamping lever with bearings
- continuous, large clamping area
- clamping lever entirely retractable for hindrance-free exchange of workpieces
- threaded clamping lever can be used with many clamping elements, e.g. ball-ended thrust screws (EH 22700. - EH 22720.), self-aligning pads (EH 22730./EH 22740.) etc.
- large adjusting range at constant clamping force
- continuous height adjustment by height adaptors 23690.0112/.0116
- easy and flexible set up
- corrosion-resistant
- resistant to dirt and chips

Material

Body

- Heat-treated steel, black coated

Clamping Levers

- Heat-treated steel, tempered, silver coated

Assembly

Assembly and Set-Up:

1. Take out stop pin ISO 4762-M 6 x 10.
2. Move back and take out clamping lever.
3. Tightening by 2 screws with internal hexagon (included in supply volume).
4. Place clamping lever in sliding rail and then insert.
5. Tighten stop pin ISO 4762 - M 6 x 10.

Operation

Clamping Process:

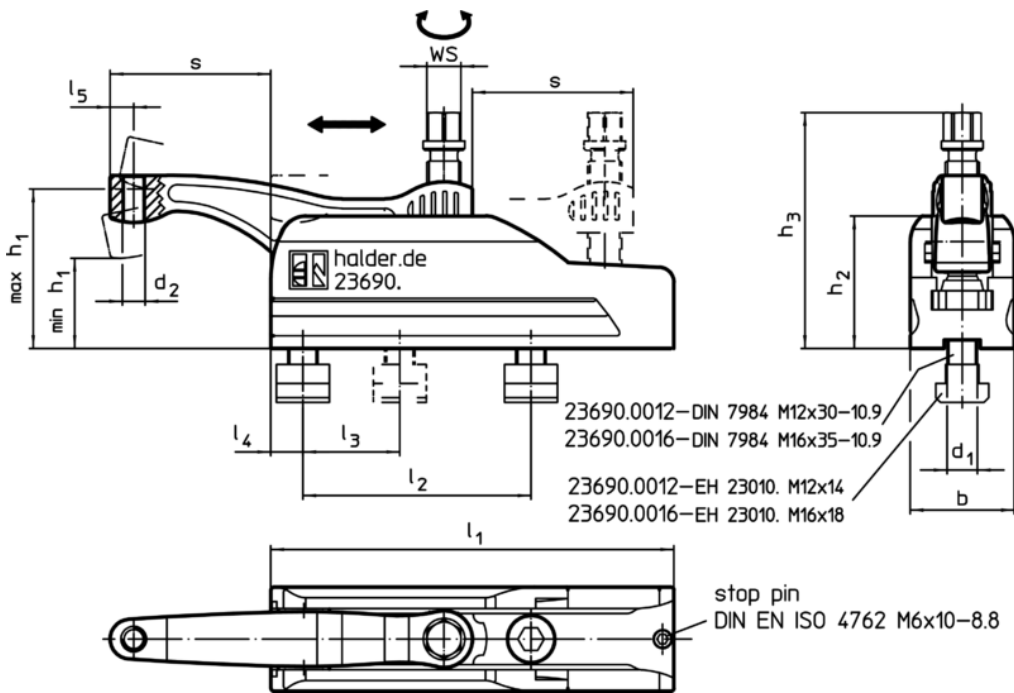
1. Slide clamping lever to clamping position.
2. Clamping is made via a hexagon collar screw.
3. Releasing is done in reverse order.

More information

Further products

- Height Adaptors, for compact clamp

Drawing



Order information

Dimensions													WS	Clamping force max.	Tightening torque max.	📦	Art. No.
d ₁	d ₂	h ₁ min.	h ₁ max.	h ₂	h ₃	s max.	l ₁	l ₂ +1	l ₃	l ₄	l ₅	b					
M16	M12	47	85	70	126	85	213	120	50	17	12,5	55	18	25	75	4274	23690.0016

Application example

