

Screw Jacks

23470.0021



Product Description

Trapezoidal self-locking thread, spindle with final safety device. The holders, which can be secured by means of the T-slots, make it possible to tighten the jacks so that they will not slip out of position when a workpiece is changed. They also allow to fit screw jacks to vertical clamping surfaces. Screw jacks are frequently used for supporting workpieces. Use of the self-aligning cap ensures a correctly aligned bearing surface. Using the centering plate as an intermediate element, it is possible to fit a number of screw jacks sizes 52, 70 and 100 together one above the other.

Material

Caps

- Steel, case-hardened, blackened

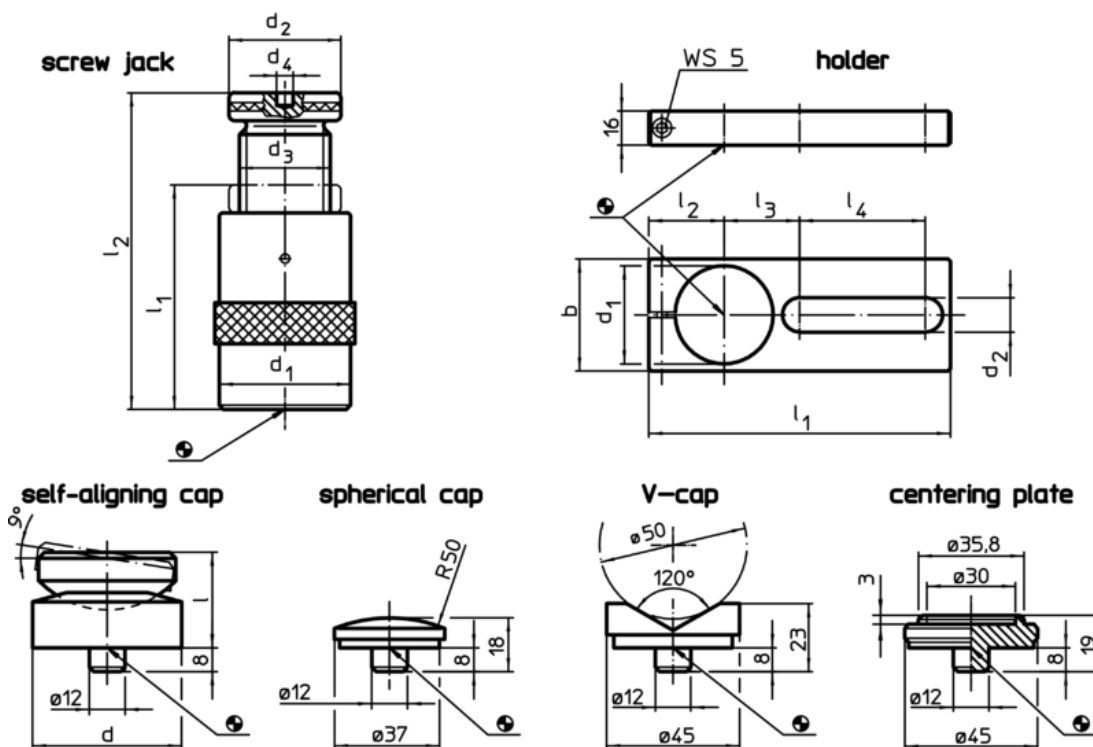
holder

- Steel, blackened

Screw Jacks

- Steel 1.0503 varnished





Drawing



Order information

| Clamping height max. [mm] | l ₁ min. | Dimensions | | | | Carrying force [kN] | [g] | Art. No. |
|------------------------------|---------------------|---------------------|----------------|----------------|---------------------|---------------------|------|------------|
| | | d ₁ [mm] | d ₂ | d ₃ | d ₄ [mm] | | | |
| 210 | 140 | 80 | 70 | Tr 50 x 8 | 12 | 170 | 4336 | 23470.0021 |

Accessories

| | d [mm] | d ₁ | b | Dimensions | | | | | | For screw jacks [mm] |  [g] | Art. No. |
|--|-----------|----------------|---|----------------|----|----------------|----------------|----------------|----------------|-------------------------|--|----------------------------|
| | | | | d ₂ | l | l ₁ | l ₂ | l ₃ | l ₄ | | | |
| self-aligning cap | | | | | | | | | | | | |
|  | 65 | - | - | - | 35 | - | - | - | - | 140/210 | 715 | 23470.0365 |
| spherical cap | | | | | | | | | | | | |
|  | - | - | - | - | - | - | - | - | - | 52/ 70/100/140/210/300 | 74 | 23470.0171 |
| V-cap | | | | | | | | | | | | |
|  | - | - | - | - | - | - | - | - | - | 52/ 70/100/140/210/300 | 138 | 23470.0172 |