

Screw Jacks

23470.0006



Product Description

Trapezoidal self-locking thread, spindle with final safety device. The holders, which can be secured by means of the T-slots, make it possible to tighten the jacks so that they will not slip out of position when a workpiece is changed. They also allow to fit screw jacks to vertical clamping surfaces. Screw jacks are frequently used for supporting workpieces. Use of the self-aligning cap ensures a correctly aligned bearing surface. Using the centering plate as an intermediate element, it is possible to fit a number of screw jacks sizes 52, 70 and 100 together one above the other.

Material

Caps

- Steel, case-hardened, blackened

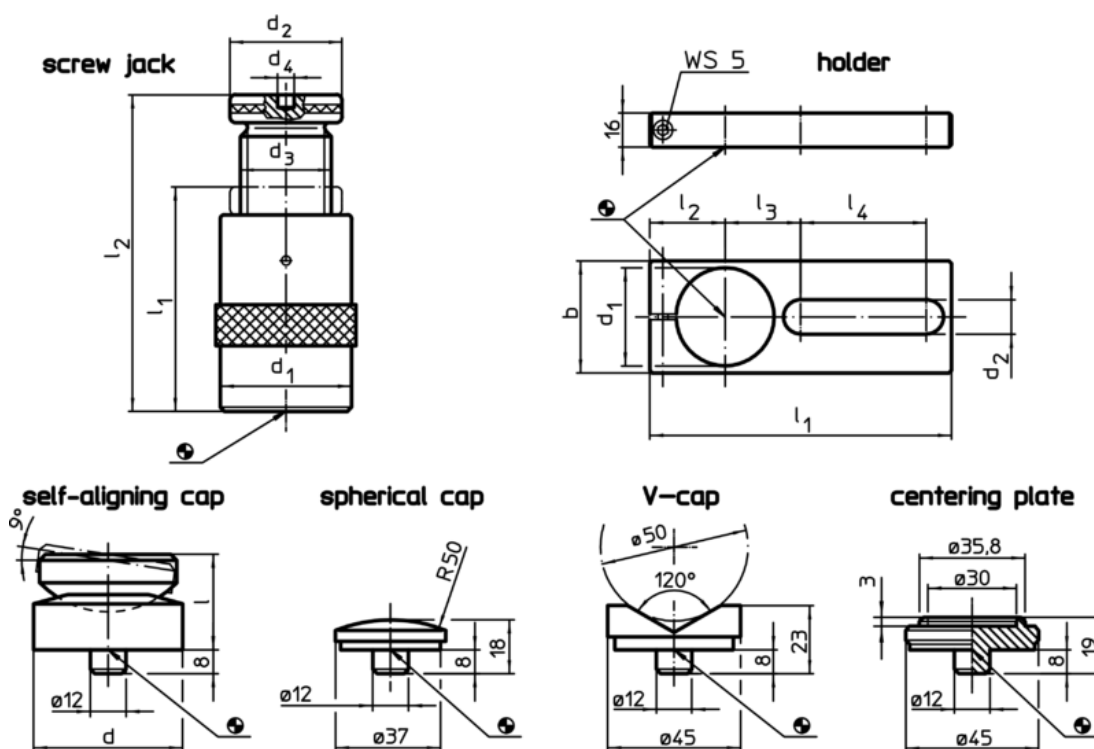
holder

- Steel, blackened


Screw Jacks

- Steel 1.0503 varnished





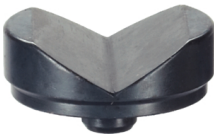

Drawing



Order information

l ₂ Clamping height max. [mm]	Dimensions					Carrying force [kN]		Art. No.
	l ₁ min.	d ₁	d ₂	d ₃	d ₄			
	[mm]	[mm]			[mm]			
screw jack								
52	42	50	50	Tr 30 x 4	12	60	539	23470.0006

Accessories

	Dimensions									For screw jacks [mm]	 [g]	Art. No.
	d	d ₁	b	d ₂	l [mm]	l ₁	l ₂	l ₃	l ₄			
holder												
	–	50	60	20,5	–	190	38	46	90	52/ 70/100	891	23470.0250
self-aligning cap												
	50	–	–	–	32	–	–	–	–	52/ 70/100	399	23470.0350
spherical cap												
	–	–	–	–	–	–	–	–	–	52/ 70/100/140/210/300	74	23470.0171
V-cap												
	–	–	–	–	–	–	–	–	–	52/ 70/100/140/210/300	138	23470.0172
centering plate												
	–	–	–	–	–	–	–	–	–	52/ 70/100	107	23470.0170