

Screw Jacks

23470.0005



Product Description

Trapezoidal self-locking thread, spindle with final safety device. The holders, which can be secured by means of the T-slots, make it possible to tighten the jacks so that they will not slip out of position when a workpiece is changed. They also allow to fit screw jacks to vertical clamping surfaces. Screw jacks are frequently used for supporting workpieces. Use of the self-aligning cap ensures a correctly aligned bearing surface. Using the centering plate as an intermediate element, it is possible to fit a number of screw jacks sizes 52, 70 and 100 together one above the other.

Material

Caps

- Steel, case-hardened, blackened

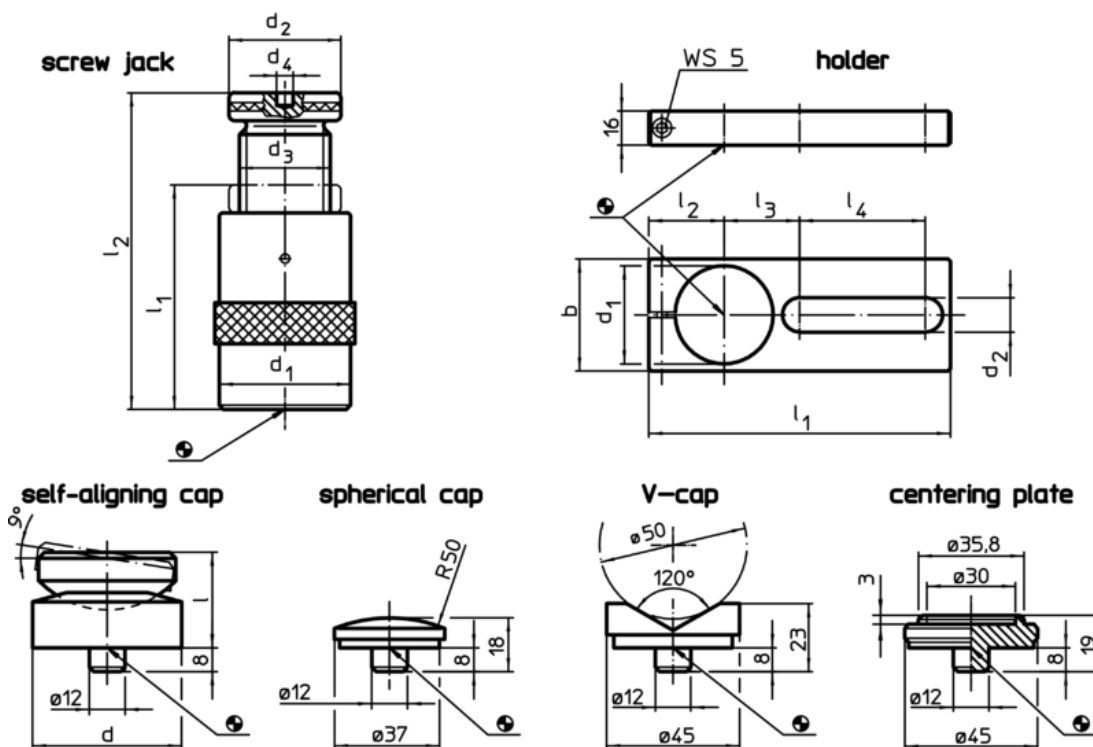
holder

- Steel, blackened

Screw Jacks

- Steel 1.0503 varnished



Drawing



Order information

I ₂ Clamping height max. [mm]	I ₁ min.	Dimensions			Carrying force [kN]	[g]	Art. No.	
		d ₁ [mm]	d ₂	d ₃				
screw jack	50	38	31	31	Tr 20 x 4	15	191	23470.0005

Accessories

	Dimensions									For screw jacks [mm]	 [g]	Art. No.
	d	d ₁	b [mm]	d ₂	l	l ₁	l ₂	l ₃	l ₄			
holder												
	-	31	40	18,5	-	175	30	35	90	50	518	23470.0232