

Clamping Elements

23370.0031



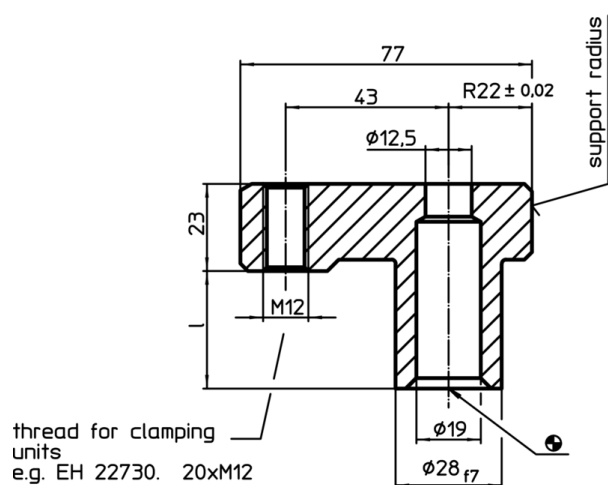
Product Description

Used as clamps in conventional fixtures. A reamed hole is provided in the body of the fixture. The hole depth has to be adapted to the desired clamping height. To provide a counter force, a support can be placed against the rounded end of the clamp (radius 22). This support can be flat, half-rounded or V-shaped. Clamping is achieved by means of a DIN 933 hexagon screw.

Material

- Steel, case-hardened, blackened, ground

Drawing



Order information

Dimensions l [mm]	Clamp length [mm]	Location hole H7 [mm]	 [g]	Art. No.
31	77	28	433	23370.0031

Application example

