

Shaft Clamps

23341.0025

Product Description

Shaft clamps used to clamp round workpieces, e.g. shafts, axels, tubes or rods both axially and radially.



Material

Body

- Steel, blackened

Clamping screw

- Steel, zinc-plated (DIN 912)

Assembly

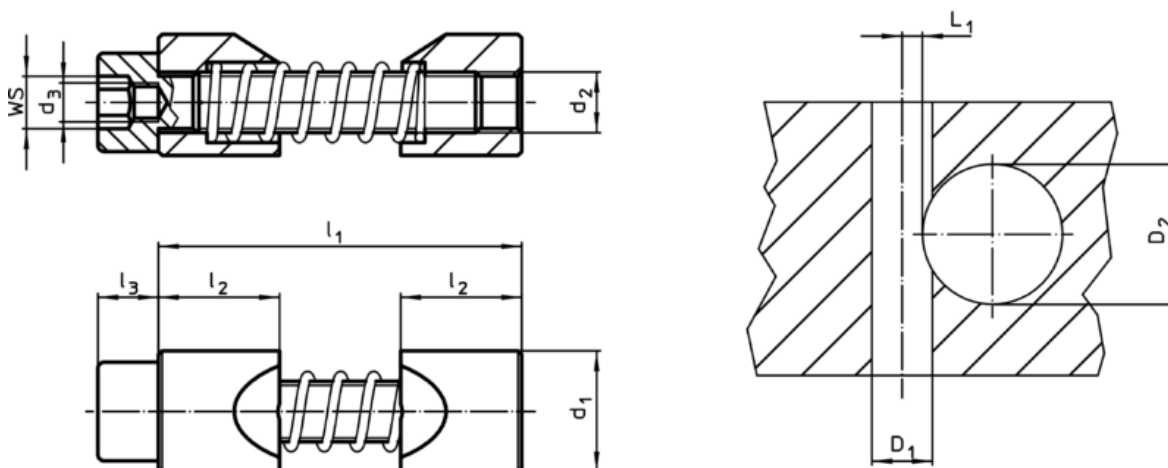
1. Expand the clamping jaws to the diameter of the shaft to be clamped.
2. Insert shaft clamp into hole using the assembly tool.
3. Insert and position the shaft.
4. Clamp using cylinder screw WS (observe tightening torque).

More information

Notes

The thread d_3 serves to hold the assembly tool (optional).


Drawing



Order information

d_1 h11	d_2	Dimensions				WS	Tightening torque max.	Location hole			Art. No.	
		d_3	l_1 max.	l_2	l_3			Hub bore D_1 H7	Shaft diameter D_2	L_1 +0,2		
		[mm]				[mm]	[Nm]	[mm]			[g]	
25	M12	M8	70	25	12	10	82	25	40 – 60	5,6	189	23341.0025

Accessories

	WS [mm]	Art. No.
special hex key		
	10	23341.1025

Application example

