

## Shaft Clamps

23341.0020

### Product Description

Shaft clamps used to clamp round workpieces, e.g. shafts, axels, tubes or rods both axially and radially.



### Material

#### Body

- Steel, blackened

#### Clamping screw

- Steel, zinc-plated (DIN 912)

### Assembly

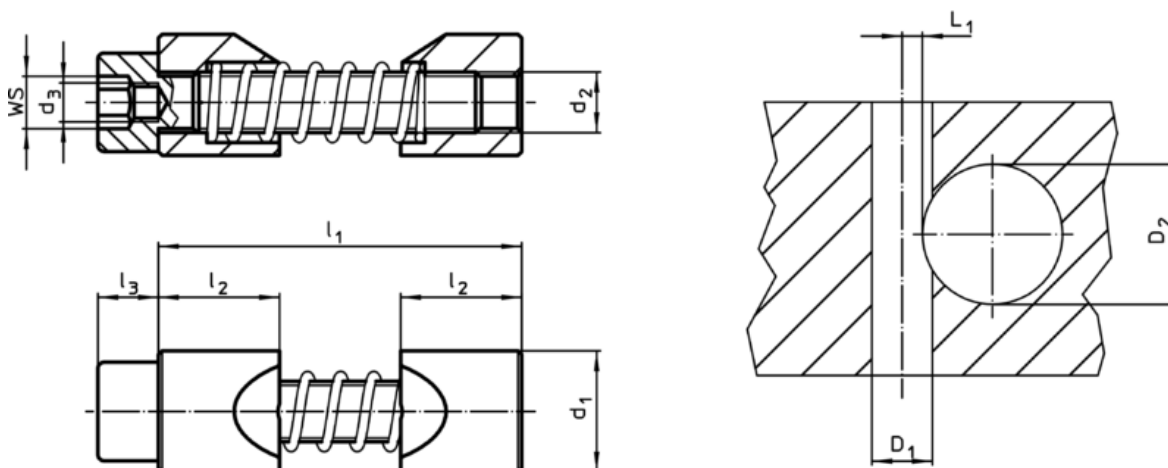
1. Expand the clamping jaws to the diameter of the shaft to be clamped.
2. Insert shaft clamp into hole using the assembly tool.
3. Insert and position the shaft.
4. Clamp using cylinder screw WS (observe tightening torque).

### More information

### Notes

The thread  $d_3$  serves to hold the assembly tool (optional).


### Drawing



### Order information

$d_1$ h11	$d_2$	Dimensions				WS	Tightening torque max.	Location hole			Art. No.	
		$d_3$	$l_1$ max.	$l_2$	$l_3$			Hub bore $D_1$ H7	Shaft diameter $D_2$	$L_1$ +0,2		
[mm]						[mm]	[Nm]	[mm]			[g]	
20	M10	M6	53	20	10	8	46	20	30 – 40	4,8	104	23341.0020

### Accessories

	WS [mm]	Art. No.
special hex key		
	8	23341.1020

Application example

