

## Centering Clamping Elements with clamping balls

23340.0254



### Product Description

To be used for accurate centering and clamping of workpieces with locating hole on which light spherical marks are acceptable. Exact self-centering with a precision of  $\pm 0,025$  mm. The clamping balls frictionally center and hold workpieces with raw or pre-machined surfaces down to the bearing points. Large adjustment stroke and a small building height are a feature of this center clamping element.

**Mounting from either top or bottom.**

### Material

#### Body

- Tool steel, hardened, blackened

#### Spring

- Stainless steel

#### Clamping balls

- Stainless steel 1.4112, hardened and ground

### Assembly

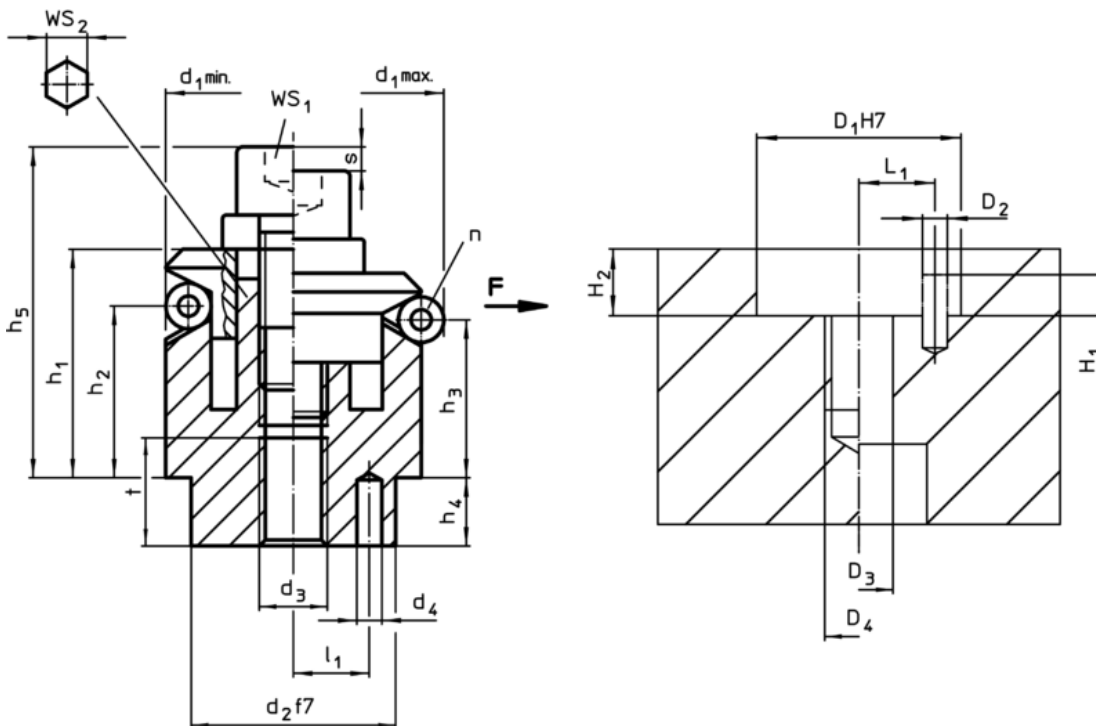
Assembly instruction for mounting from the top: Take-off clamping plate and screw. Fasten body by means of threaded pin via WS<sub>2</sub>.

### More information

### Further products

- Centering Clamping Elements, with clamping segments

### Drawing



### Order information

Dimensions													Number of balls n	Stroke s	WS		Clamping force F max.	Tightening torque max.	Location hole				Art. No.				
d <sub>1</sub> min.	d <sub>1</sub> max.	d <sub>2</sub> f7	d <sub>3</sub>	d <sub>4</sub> +0,3 -1	h <sub>1</sub>	h <sub>2</sub>	h <sub>3</sub>	h <sub>4</sub>	h <sub>5</sub> -2	l <sub>1</sub> ±0,1	Ball Ø	t			WS <sub>1</sub>	WS <sub>2</sub>			force F max. [kN]	torque [Nm]	D <sub>1</sub> H7	D <sub>2</sub>		D <sub>3</sub>	D <sub>4</sub>	H <sub>1</sub>	H <sub>2</sub>
54,5	70,5	45	M10	5	40,6	23,7	19,1	9	54,6	15	16	12	6	9,2	8	10	8	79	45	5	10	M10	6,5	9	15	653	23340.0254

Application example

