

Centering Clamping Elements with clamping balls

23340.0222



Product Description

To be used for accurate centering and clamping of workpieces with locating hole on which light spherical marks are acceptable. Exact self-centering with a precision of $\pm 0,025$ mm. The clamping balls frictionally center and hold workpieces with raw or pre-machined surfaces down to the bearing points. Large adjustment stroke and a small building height are a feature of this center clamping element.

Mounting from either top or bottom.

Material

Body

- Tool steel, hardened, blackened

Spring

- Stainless steel

Clamping balls

- Stainless steel 1.4112, hardened and ground

Assembly

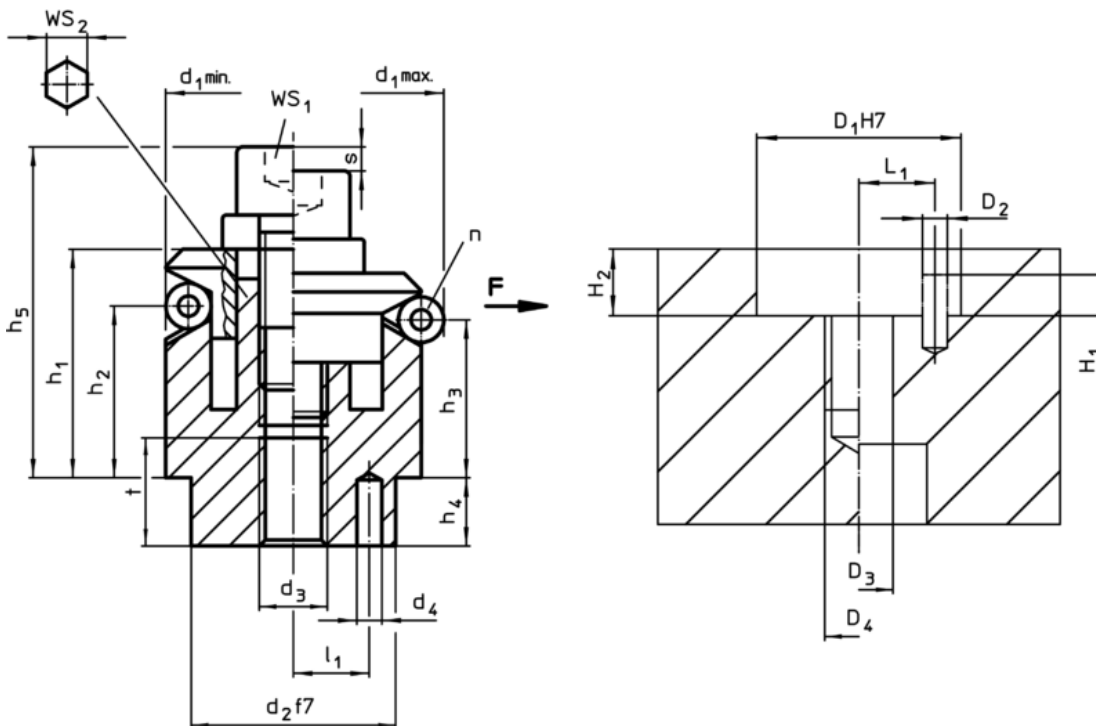
Assembly instruction for mounting from the top: Take-off clamping plate and screw. Fasten body by means of threaded pin via WS₂.

More information

Further products

- Centering Clamping Elements, with clamping segments

Drawing



Order information

| Dimensions | | | | | | | | | | | | | | Number of balls n | Stroke s | WS | | Clamping force F max. | Tightening torque max. | Location hole | | | | | | | Art. No. |
|---------------------|---------------------|-------------------|----------------|---------------------|-------------------|----------------|----------------|----------------|-------------------|---------------------|--------|---|-----------------|----------------------|-------------|-----------------|-------------------|--------------------------|---------------------------|----------------|----------------|----------------|----------------|-----------------------|----------------|-----|------------|
| d ₁ min. | d ₁ max. | d ₂ f7 | d ₃ | d ₄ +0,3 | h ₁ -1 | h ₂ | h ₃ | h ₄ | h ₅ -2 | l ₁ ±0,1 | Ball Ø | t | WS ₁ | | | WS ₂ | D ₁ H7 | | | D ₂ | D ₃ | D ₄ | H ₁ | H ₂ +0,±0, | L ₁ | [g] | |
| [mm] | | | | | | | | | | | | | | | [mm] | [mm] | [kN] | [Nm] | [mm] | | | | | | | | |
| 22,5 | 26,5 | 20 | M6 | 3 | 19,6 | 14,1 | 12,9 | 6 | 28,6 | 7 | 4 | 8 | 3 | 2,3 | 5 | 6 | 5 | 17 | 20 | 3 | 6 | M6 | 3,5 | 6 | 7 | 60 | 23340.0222 |

Application example

