

## Centering Clamping Elements with clamping balls

23340.0212



### Product Description

To be used for accurate centering and clamping of workpieces with locating hole on which light spherical marks are acceptable. Exact self-centering with a precision of  $\pm 0,025$  mm. The clamping balls frictionally center and hold workpieces with raw or pre-machined surfaces down to the bearing points. Large adjustment stroke and a small building height are a feature of this center clamping element.

**Mounting from either top or bottom.**

### Material

#### Body

- Tool steel, hardened, blackened

#### Spring

- Stainless steel

#### Clamping balls

- Stainless steel 1.4112, hardened and ground

### Assembly

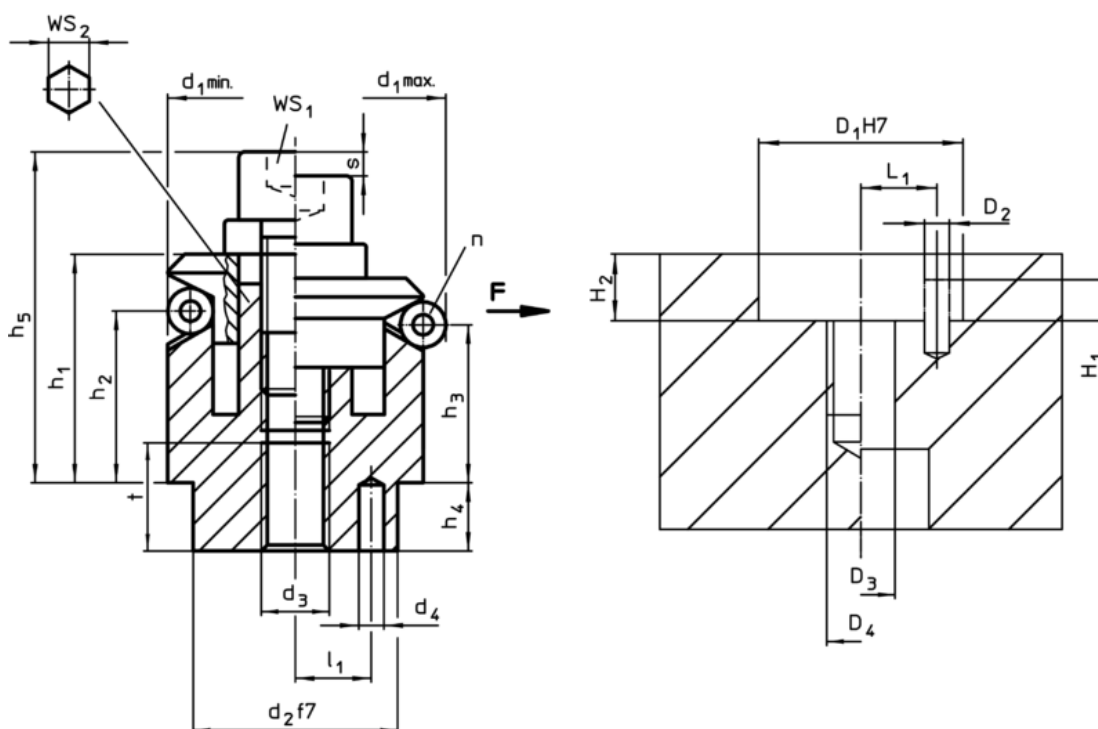
Assembly instruction for mounting from the top: Take-off clamping plate and screw. Fasten body by means of threaded pin via WS<sub>2</sub>.

### More information

### Further products

- Centering Clamping Elements, with clamping segments

### Drawing



### Order information

Dimensions														Number of balls n	Stroke s	WS WS <sub>1</sub>	Clamping force F max.	Tightening torque max.	Location hole							Art. No. <sup>1)</sup>
d <sub>1</sub> min.	d <sub>1</sub> max.	d <sub>2</sub> f7	d <sub>3</sub>	d <sub>4</sub> +0,3	h <sub>1</sub> -1	h <sub>2</sub>	h <sub>3</sub>	h <sub>4</sub>	h <sub>5</sub> -2	l <sub>1</sub> ±0,1	Ball Ø	t	D <sub>1</sub> H7						D <sub>2</sub>	D <sub>3</sub>	D <sub>4</sub>	H <sub>1</sub>	H <sub>2</sub> +0,5	L <sub>1</sub> ±0,1	[g]	
[mm]														[mm]	[mm]	[kN]	[Nm]	[mm]								
11,7	14,2	10	M4	1,5	8,6	3,9	3,2	3,5	14,7	3,5	2,5	4	3	1,3	3	0,5	5	10	1,5	4	M4	2	3,5	3,5	9	23340.0212

<sup>1)</sup> no WS<sub>2</sub> clamping screw and threaded pin to be mounted from top

Application example

