

Centering Clamping Mandrels

23340.0118



Product Description

For clamping and centering of workpieces with internal bore.

Material

Body

- Steel, blackened

Clamping screw

- Case-hardened steel, case hardened

Assembly

The centering clamping mandrel can be machined to the required seating diameter (e.g. by turning/milling). It must be noticed that before machining the centering clamping mandrel, it will be expanded approx. 0.1 mm over the clamping diameter. To machine the mandrel, a nut will be provided.

More information

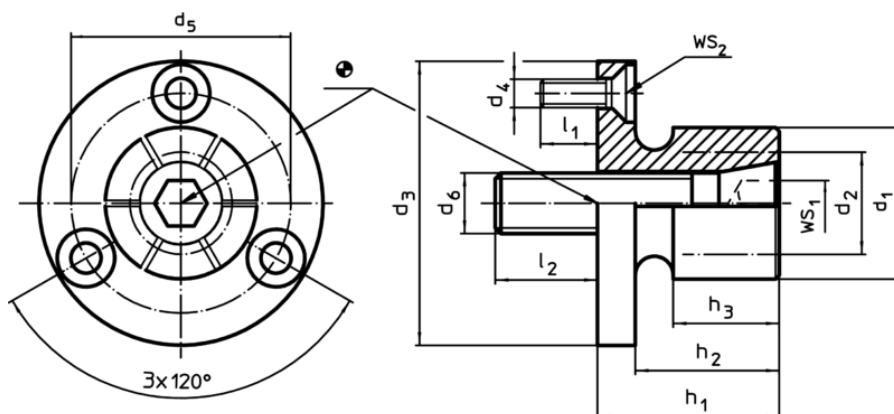
Notes

Special types on request.

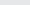
Further products

- Centering Clamping Mandrels, with lateral handling

Drawing



Order information

d ₁	d ₂ min.	d ₃ -0,05	d ₄	d ₅	Dimensions						Number of segments	WS		Clamping force max.	Tightening torque max.	Location hole H7		Art. No. ¹⁾
					d ₆	h ₁	h ₂	h ₃	l ₁	l ₂		WS ₁	WS ₂					
					[mm]							[mm]						
77	30	107,5	M6	92,5	M16	45,5	37,6	32,3	12	20	8	14	4	26	200	107,5	1832	23340.0118

¹⁾ including clamping nut and clamping ring to enable machining as described in note

Application example

