

Centering Clamping Mandrels

23340.0116



Product Description

For clamping and centering of workpieces with internal bore.

Material

Body

- Steel, blackened

Clamping screw

- Case-hardened steel, case hardened

Assembly

The centering clamping mandrel can be machined to the required seating diameter (e.g. by turning/milling). It must be noticed that before machining the centering clamping mandrel, it will be expanded approx. 0.1 mm over the clamping diameter. To machine the mandrel, a nut will be provided.

More information

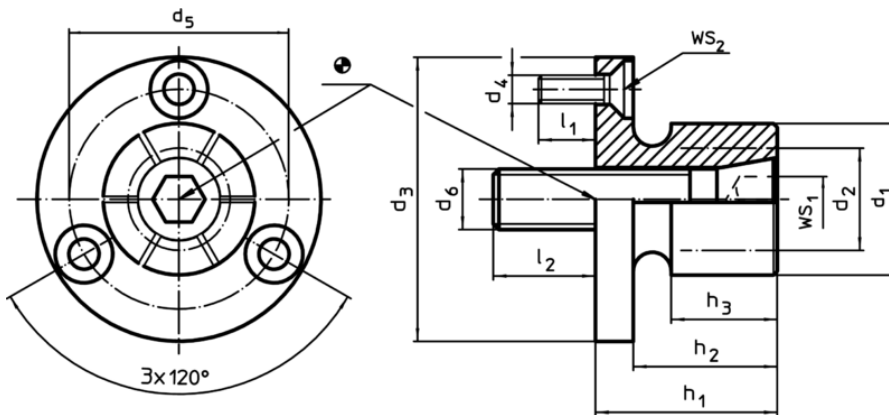
Notes

Special types on request.

Further products

- Centering Clamping Mandrels, with lateral handling

Drawing



Order information

d ₁	d ₂ min.	d ₃ -0,05	d ₄	d ₅	Dimensions						Number of segments	WS		Clamping force max. [kN]	Tightening torque max. [Nm]	Location hole H7 [mm]	Art. No.	
					d ₆	h ₁	h ₂	h ₃	l ₁	l ₂		WS ₁	WS ₂					
[mm]											[mm]		[g]					
51	30	75,5	M5	63,9	M16	39,6	31,8	27	11	22	6	14	3	26	200	75,5	809	23340.0116

Application example

