

## Centering Clamping Elements with clamping segments

23340.0018



### Product Description

For clamping and centering of workpieces with internal bore. Exact self centering with a precision of  $\pm 0,025$  mm. Due to the clamping segments being ground, workpieces with raw and/or machined surfaces can be frictionally connected, centered and held down at the seats. Large adjustment stroke and a low building height are a feature of the centering clamping element. **Mounting from either top or bottom.**

### Material

#### Body

- Tool steel, hardened, blackened

#### Spring

- Stainless steel

#### Clamping segments

- Stainless steel 1.4112, hardened and ground

### Assembly

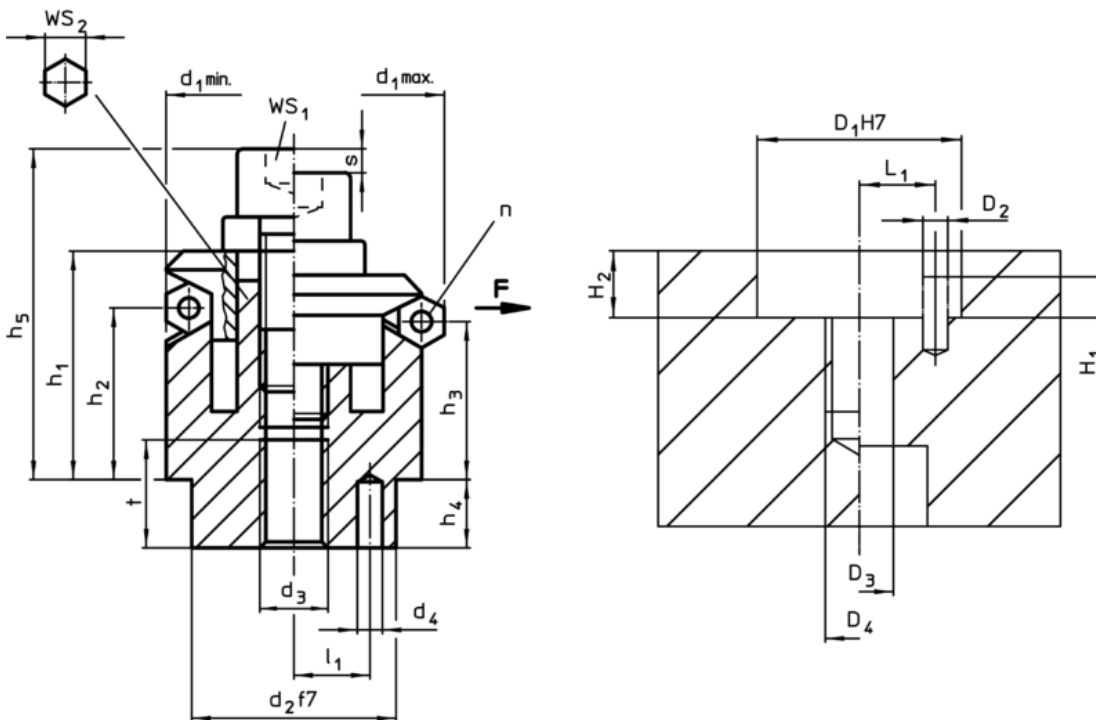
Assembly instruction for mounting from the top: Take-off clamping plate and screw. Fasten body by means of threaded pin via WS<sub>2</sub>.

### More information

### Further products

- Centering Clamping Elements, with clamping balls

### Drawing



### Order information

Dimensions													Number of segments n	Stroke s	WS		Clamping force F max.	Tightening torque max.	Location hole						Art. No.		
d <sub>1</sub> min.	d <sub>1</sub> max.	d <sub>2</sub> f7	d <sub>3</sub>	d <sub>4</sub> +0,3	h <sub>1</sub> -1	h <sub>2</sub>	h <sub>3</sub>	h <sub>4</sub>	h <sub>5</sub> -2	l <sub>1</sub> ±0,1	t	WS <sub>1</sub>			WS <sub>2</sub>	D <sub>1</sub> H7			D <sub>2</sub>	D <sub>3</sub>	D <sub>4</sub>	H <sub>1</sub>	H <sub>2</sub> +0,5	L <sub>1</sub> ±0,1		[g]	
[mm]														[mm]	[mm]	[kN]	[Nm]	[mm]									
18,5	22,5	15	M5	2,5	16,6	11,5	10,4	7,5	22,8	5,5	7		3	2,3	4	5	4,5	10	15	2,5	5	M5	2,5	7,5	5,5	38	23340.0018

Application example

