

Centering Clamping Elements with clamping segments

23340.0014



Product Description

For clamping and centering of workpieces with internal bore. Exact self centering with a precision of $\pm 0,025$ mm. Due to the clamping segments being ground, workpieces with raw and/or machined surfaces can be frictionally connected, centered and held down at the seats. Large adjustment stroke and a low building height are a feature of the centering clamping element. **Mounting from either top or bottom.**

Material

Body

- Tool steel, hardened, blackened

Spring

- Stainless steel

Clamping segments

- Stainless steel 1.4112, hardened and ground

Assembly

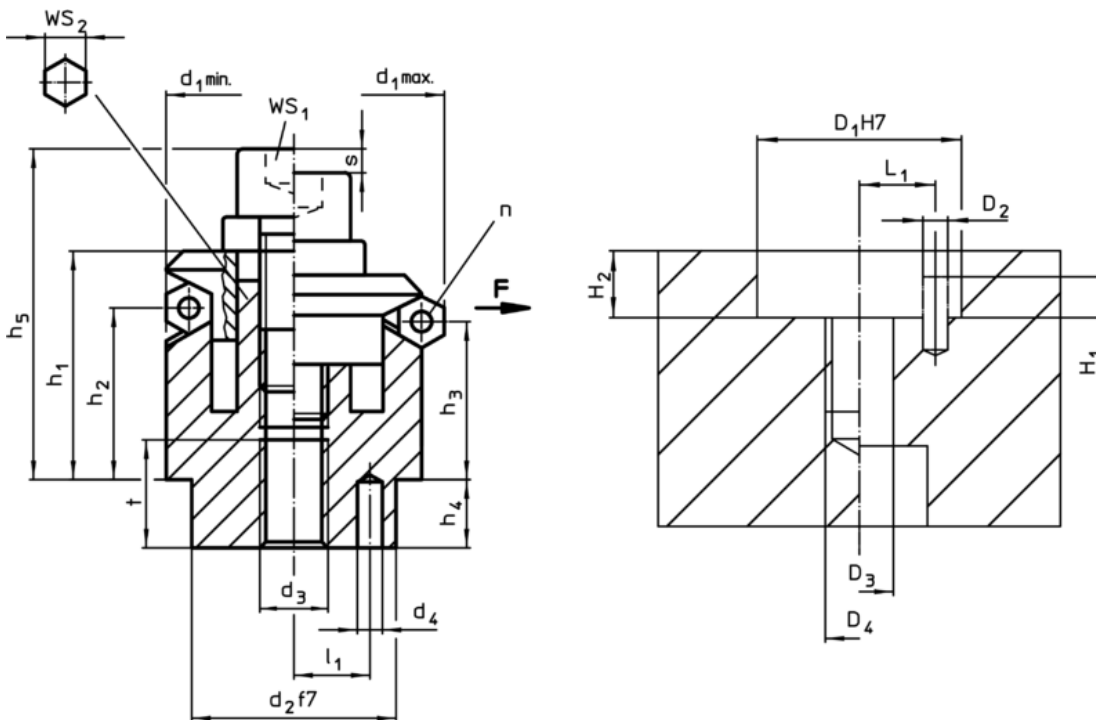
Assembly instruction for mounting from the top: Take-off clamping plate and screw. Fasten body by means of threaded pin via WS₂.

More information

Further products

- Centering Clamping Elements, with clamping balls

Drawing



Order information

Dimensions														Number of segments n	Stroke s	WS		Clamping force F max. [kN]	Tightening torque max. [Nm]	Location hole						Art. No.
d_1 min.	d_1 max.	d_2 f7	d_3	d_4 +0,3 -1	h_1	h_2	h_3	h_4	h_5 -2	l_1 $\pm 0,1$	t	WS ₁	WS ₂			D_1 H7	D_2			D_3	D_4	H_1	H_2 +0,5 $\pm 0,1$	L_1 $\pm 0,1$	[g]	
[mm]															[mm]	[mm]			[mm]							
14,5	18,5	12	M4	2	14,3	9,8	8,6	5,5	19,3	4,5	6	3	2,3	3	5	3,5	5	12	2	4	M4	2	5,5	4,5	19	23340.0014

Application example

