

Clamping Jaws- for floating clamp M 12

23320.0156



Product Description

The clamping jaws can be used for the floating clamps 23320.0008, 23320.0012 and 23320.0014. The upper clamping jaw (23320.0054, 23320.0056 and 23320.0058 - picture 1-3) can be used to increase the clamping range.

In the upper clamping jaw with female thread M 8 (23320.0154 / .0156 - picture 4 + 5) different standard parts can be screwed in as required.

The lower clamping jaw with pivot function (23320.0148 - picture 6) adapts to the draughts of the workpiece.

Material

Clamping Jaws

- Case hardened steel, nitrided, manganese phosphate treated

More information

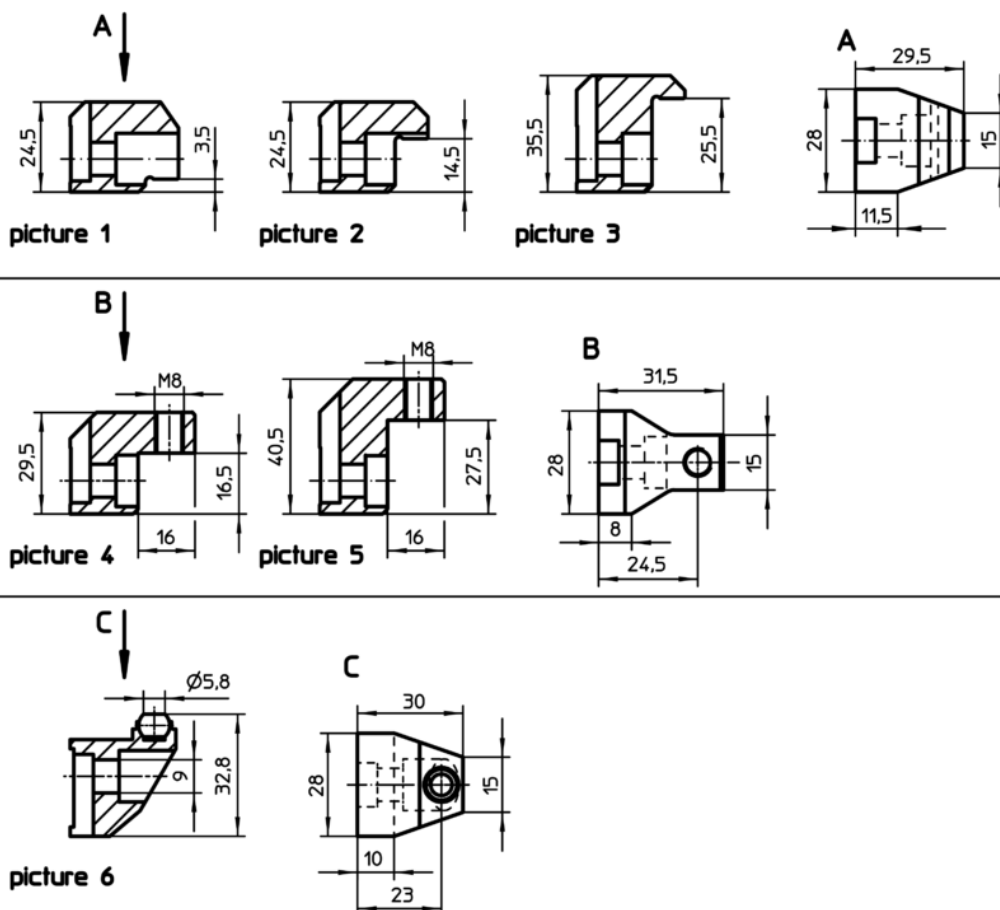
Notes

The tightening torque of the floating clamp must be adapted/reduced situationally. Observe the surface pressure due to the reduced contact surface of the clamping jaws.


Further products

- Seating Pins, ribbed or pointed
- Ball-Ended Thrust Screws, headless, ball protected against rotating
- Ball-Ended Thrust Screws, headless, round ball
- Ball-Ended Thrust Screws, headless, flat-faced ball
- Thrust Screws, with brass pad
- Thrust Screws, with plastic pad
- Self-Aligning Pads, adjustable
- Self-Aligning Pads, adjustable with self-resetting

Drawing



Order information

| Clamping range max. in combination with 23320.0050 [mm] | Clamping range max. in combination with 23320.0148 [mm] |  [g] | Art. No. |
|---|---|--|------------|
| upper clamping jaw with location hole – picture 5 | | | |
| 40 | 34 | 112 | 23320.0156 |

Application example

