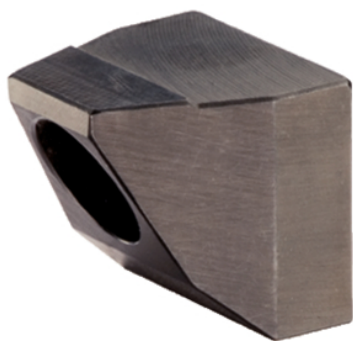


Standard Clamping Jaws for floating clamp M 12

23320.0050



Product Description

The clamping jaws can be used for floating clamps 23320.0008, 23320.0012 and 23320.0014.

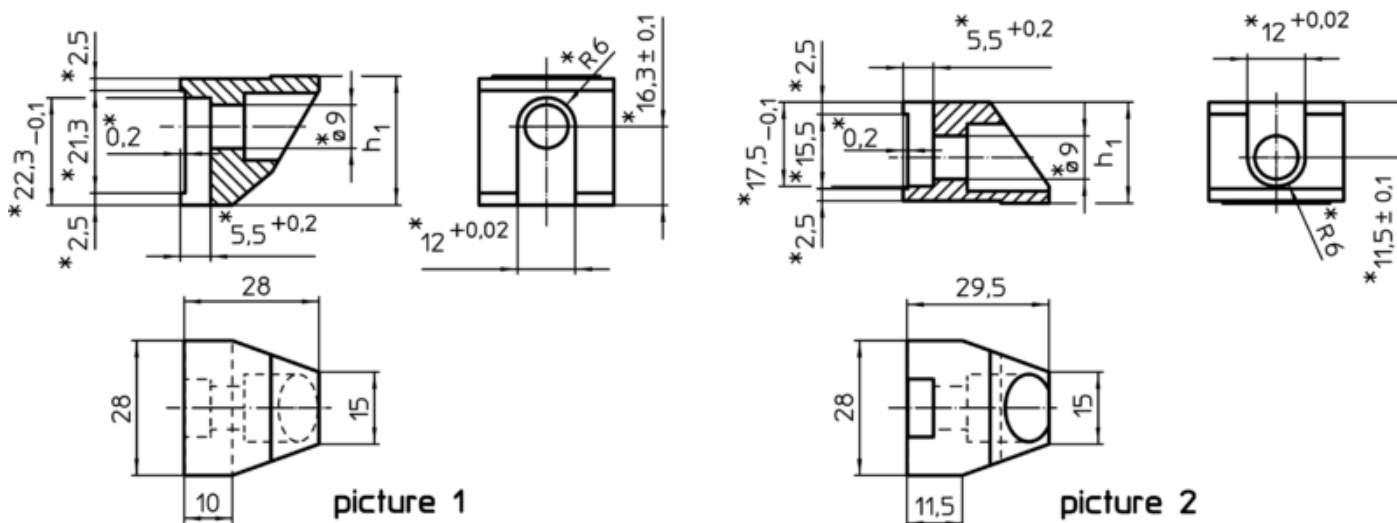
Material

- Case hardened steel, nitrided, manganese phosphate treated

Assembly

When using custom-made jaws, it is important to insert the tightening screw (M 8-12.9, 43 Nm) 10 mm deep into the clamp housing on the upper clamping jaw and 9 mm deep into the clamp housing on the lower clamping jaw.

Drawing



* Specifications and material of especially designed jaws have to be taken into consideration.

Order information

Dimensions		Art. No.
h_1		
-0,1		
[mm]	[g]	
lower standard clamping jaw – picture 1		
26,8	83	23320.0050

Application example

