

Floating Clamps· separate clamping and locking M 12

23320.0014



Product Description

Floating clamps with separate clamp and locking are used to clamp and support additional clamping points on **extremely pliable** workpieces. Both, clamping and supporting force can individually be designed.

The benefits of the floating clamp are:

- avoids vibration during the processing
- clamps ribs, beads and shackles to reinforce clamped components
- distortion-free clamping of raw parts.

Material

Adjustable body

- Aluminium, blue anodised

Body

- Case hardened steel, nitrided, manganese phosphate treated and ground

Clamping Jaws

- Case hardened steel, nitrided, manganese phosphate treated

Assembly

1. Mount the floating clamp (M 12 connection thread) onto the device with a wrench (WS 46).
2. Adjust the height limit stop and the rotating area with the blue sleeve and clamp with a set screw (3 x WS 2.5). When setting the height limit, consider tolerance of workpiece.

Operation

1. Push the floating clamp downward.
2. Pivot the clamping jaws in.
3. Release floating clamp. The bottom jaw contacts the workpiece with a low spring force.
4. Tighten the fixture nut (WS 18) having a maximum torque of 15 Nm. **The workpiece is clamped; the clamp is still floating.**
5. Thereafter tighten the hexagon collar nut (WS 10 - max. torque 10 Nm).
6. The clamping process is finished.
7. Releasing is done in reverse order: release hexagon collar nut (WS 10) - release fixture nut (WS 18) - pivot the clamping jaws out.
8. Floating clamp is in end position.

More information

Notes

The thread bore must always be closed for safe functioning, e.g. set screw M 12 x 10. For specific clamping situations, the standard clamping jaws supplied can be exchanged or replaced (see catalogue drawing: screw ISO 4762 - M8 - 12.9, M max. = 43 Nm).

References

Additional flexible possibility of fitting with holder 23470.0250 or holding plate for down-hold clamps 23210.0740.

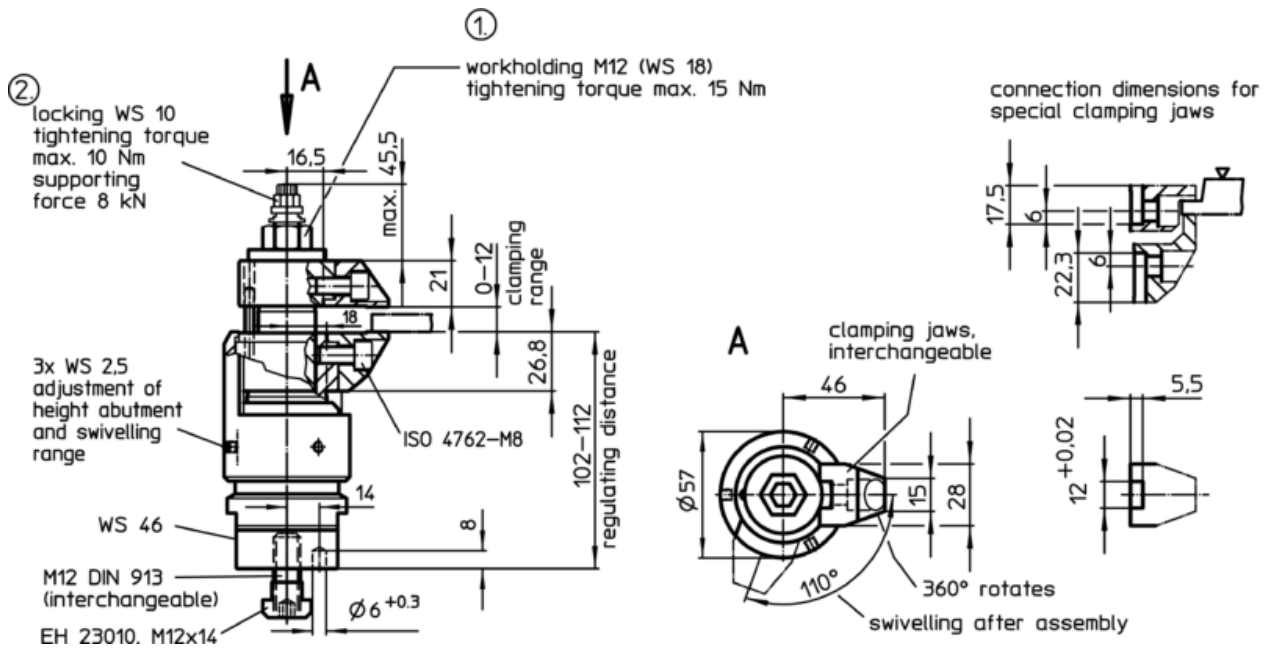
Accessories

As an accessory, we offer clamping jaws with an increased clamping range, refer to 23320.0050-.0058, as well as pivot jaws, refer to 23320.0148-.0156.


Further products

- Holding Plates, for down-hold clamps
- Floating Clamps, combined clamping and locking M 12
- Standard Clamping Jaws, for floating clamp M 12
- Clamping Jaws, for floating clamp M 12

Drawing



Order information

	Art. No.
[g]	
1890	23320.0014

Application example

