

Clamping Claws

23290.0104



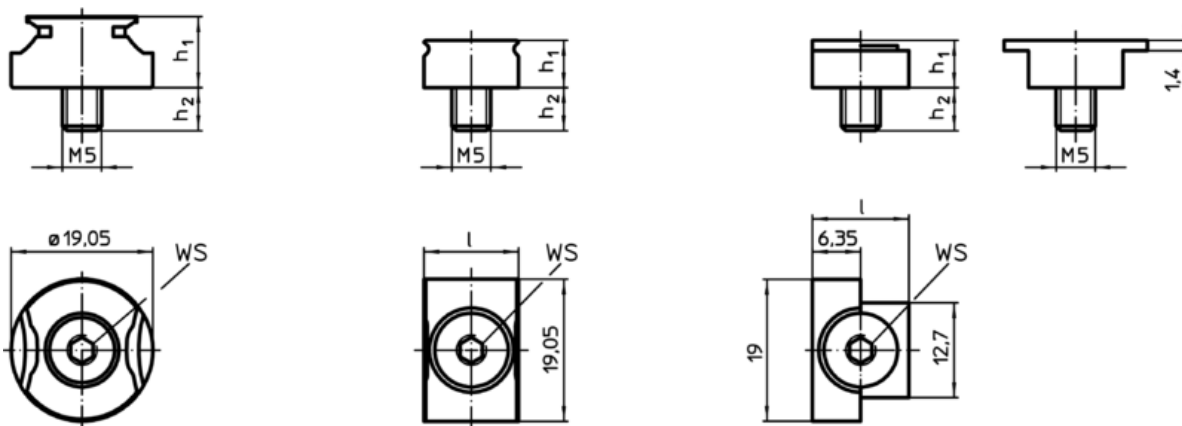
Product Description

The clamping claws are designed for the installation in clamping chucks and fixtures. Only a counterbore or rather a nut with threaded hole is needed for the installation. The sharp edges of the clamping claw are impressed in the workpiece and therefore they avoid a lateral and horizontal movement. The stop can be used for the positioning of workpieces.

Material

- Steel, hardened, blackened

Drawing



picture 1

picture 2

picture 3

Order information

| l | Dimensions | | WS | [g] | Art. No. |
|------------------|----------------|----------------|------|-----|------------|
| | h ₁ | h ₂ | | | |
| [mm] | [mm] | [mm] | [mm] | [g] | |
| stop – picture 3 | | | | | |
| 12,7 | 6,35 | 6 | 3 | 6 | 23290.0104 |

Application example

