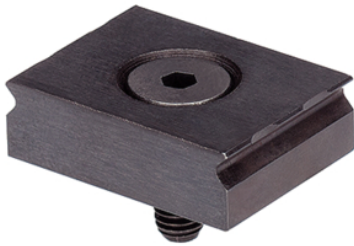


Clamping Claws

23290.0103

Product Description

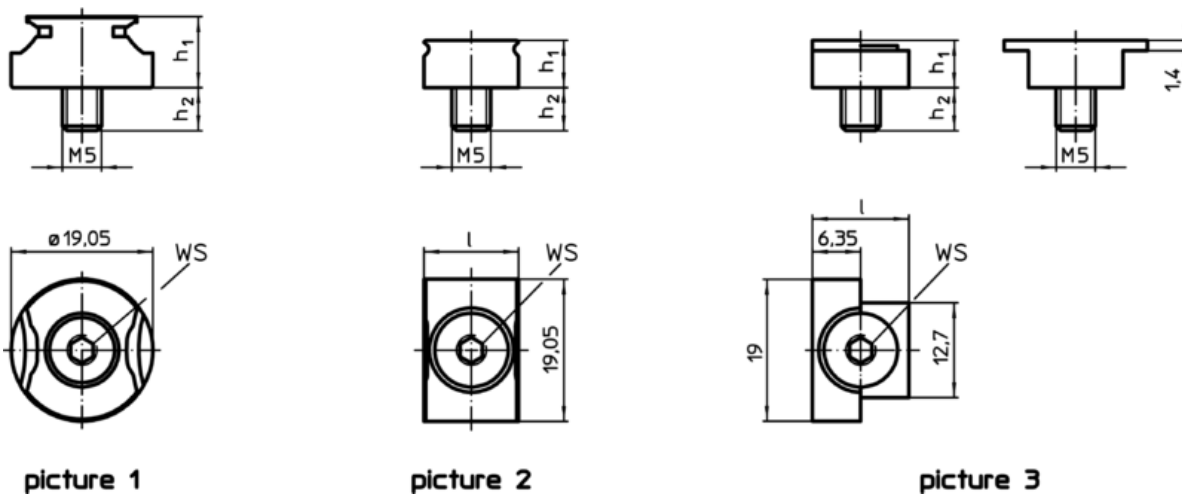
The clamping claws are designed for the installation in clamping chucks and fixtures. Only a counterbore or rather a nut with threaded hole is needed for the installation. The sharp edges of the clamping claw are impressed in the workpiece and therefore they avoid a lateral and horizontal movement. The stop can be used for the positioning of workpieces.



Material

- Steel, hardened, blackened

Drawing



Order information

l	h ₁	Dimensions		s	WS	[g]	Art. No.
		h ₂	[mm]				
clamping claw – picture 2							
25,4	7,92	8,1		1,5 – 3	3	30	23290.0103

Application example

