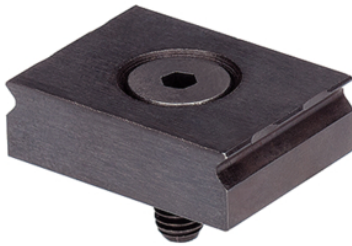


## Clamping Claws

23290.0102

### Product Description

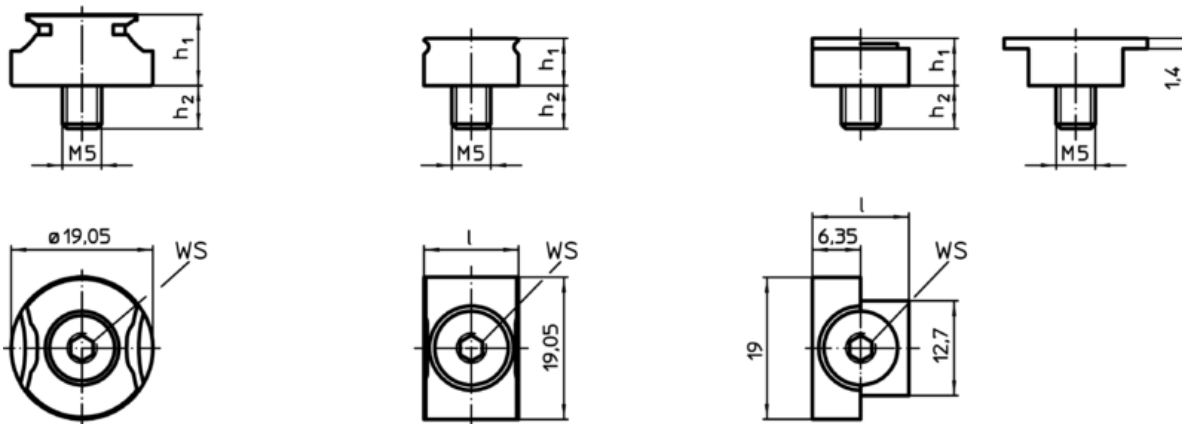
The clamping claws are designed for the installation in clamping chucks and fixtures. Only a counterbore or rather a nut with threaded hole is needed for the installation. The sharp edges of the clamping claw are impressed in the workpiece and therefore they avoid a lateral and horizontal movement. The stop can be used for the positioning of workpieces.



### Material

- Steel, hardened, blackened

### Drawing



picture 1

picture 2

picture 3

### Order information

l	Dimensions			s	WS [mm]	[g]	Art. No.
	h <sub>1</sub>	h <sub>2</sub>	[mm]				
clamping claw – picture 2							
19,05	7,92	8,1	1,5 – 3	3	22	23290.0102	

### Application example

