

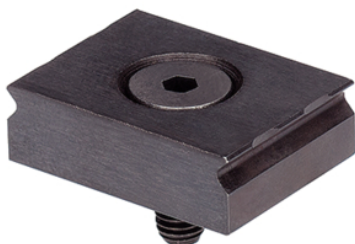
## Clamping Claws

23290.0101

### Product Description

The clamping claws are designed for the installation in clamping chucks and fixtures. Only a counterbore or rather a nut with threaded hole is needed for the installation. The sharp edges of the clamping claw are impressed in the workpiece and therefore they avoid a lateral and horizontal movement.

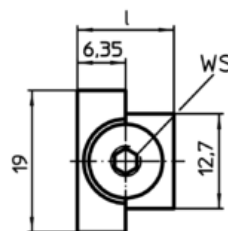
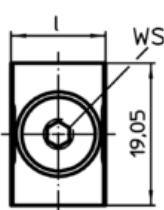
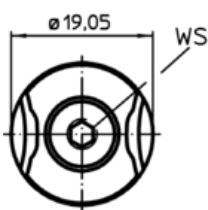
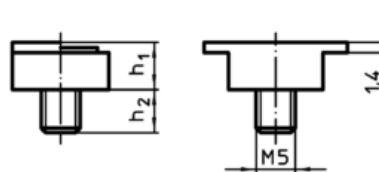
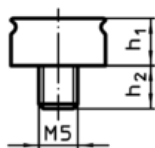
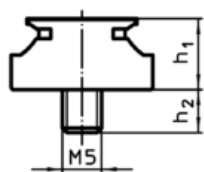
The stop can be used for the positioning of workpieces.



### Material

- Steel, hardened, blackened

### Drawing



picture 1

picture 2

picture 3

### Order information

l	h <sub>1</sub>	Dimensions		s	WS	WS	Art. No.
		h <sub>2</sub>	~				
		[mm]				[mm]	[g]
clamping claw – picture 2							
12,7	6,35	6	~	1,5 – 1,9	3	12	23290.0101

### Application example

