

Clamping Claws

23290.0100



Product Description

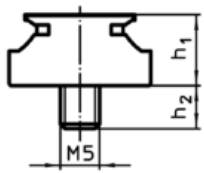
The clamping claws are designated for the installation in clamping chucks and fixtures. Only a counterbore or rather a nut with threaded hole is needed for the installation. The sharp edges of the clamping claw are impressed in the workpiece and therefore they avoid a lateral and horizontal movement.

The stop can be used for the positioning of workpieces.

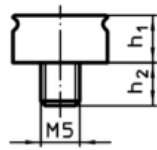
Material

- Steel, hardened, blackened

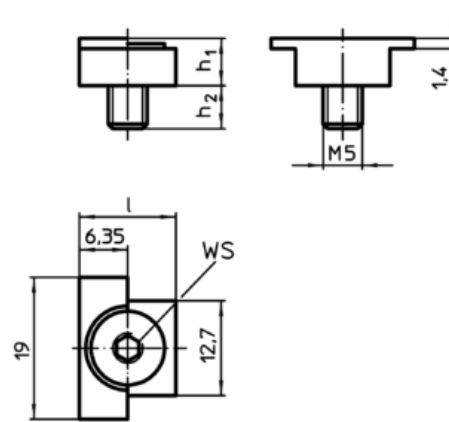
Drawing



picture 1




picture 2



picture 3

Order information

h ₁	Dimensions		WS		Art. No.
	h ₂	s			
	[mm]		[mm]	[g]	
clamping claw, round – picture 1					
9,53	5,9	1,5 – 3	4	18	23290.0100

Application example

